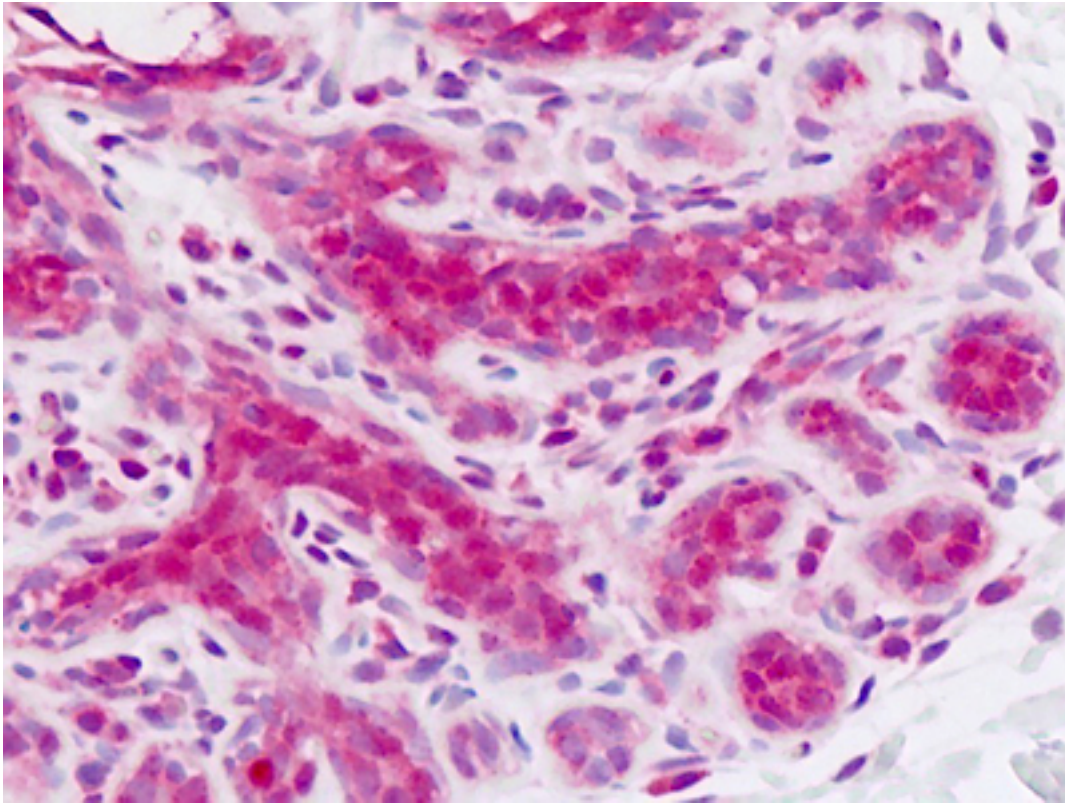


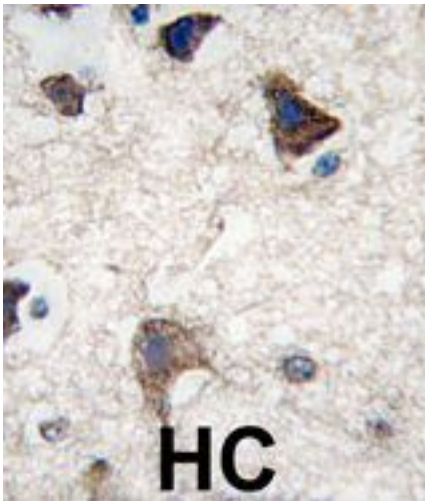
CDH4 / R Cadherin Rabbit anti-Human Polyclonal (N-Terminus) Antibody - LS-B8990 - LSBio	
CatalogID:	LS-B8990
Validation:	This antibody replaces catalog number LS-C97778. It has been validated for use in the following assays: IHC-P.
Target:	cadherin 4, type 1, R-cadherin (retinal) (CDH4)
Synonyms:	CDH4 Antibody, CAD4 Antibody, Cadherin-4 Antibody, R-CAD Antibody, RCAD Antibody, Retinal cadherin Antibody, Retina cadherin Antibody, R Cadherin Antibody, R-cadherin Antibody
Family / Subfamily:	Cadherin / not assigned-Cadherin
Host	CDH4 antibody was produced in Rabbit
Clonality:	Polyclonal
Immunogen Species:	CDH4 / R Cadherin antibody was raised against Human
Antigen Type:	Synthetic peptide
Immunogen:	CDH4 / R Cadherin antibody was raised against kLH conjugated synthetic peptide selected from the N-terminal region of human CDH4.
Epitope:	N-Terminus
Reactivity:	Human
Purification:	Immunoaffinity purified
Presentation:	PBS, 0.09% sodium azide
Recommended Storage:	Maintain refrigerated at 2-8°C for up to 6 months. For long term storage store at -20°C.
Uses:	IHC - Paraffin (10 µg/ml), Immunofluorescence (1:10 - 1:50), Western blot (1:1000), Flow Cytometry (1:10 - 1:50) (Optimal dilution to be determined by the researcher)
Size:	200 µl

Immunohistochemistry Image:



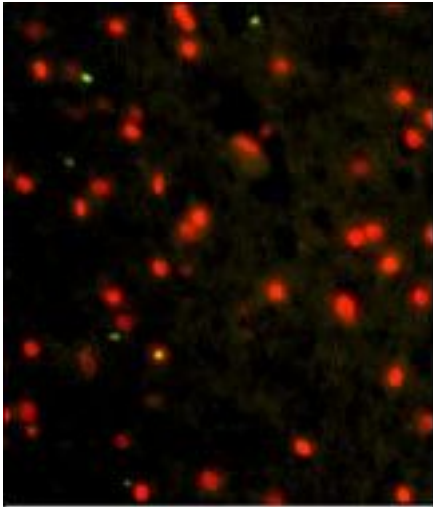
Human Breast: Formalin-Fixed, Paraffin-Embedded (FFPE)

Immunohistochemistry Image:



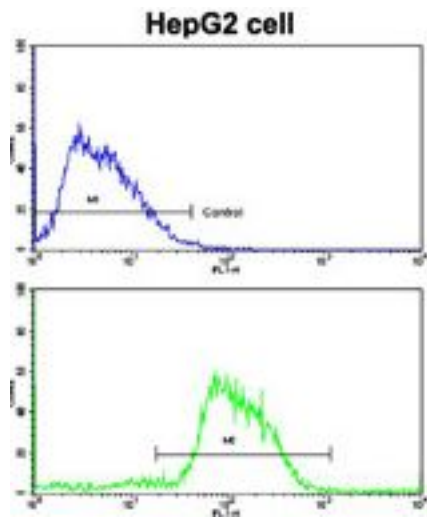
Formalin-fixed and paraffin-embedded human brain tissue reacted with CDH4 antibody (N-term), which was peroxidase-conjugated to the secondary antibody, followed by DAB staining.

Immunofluorescence Image:



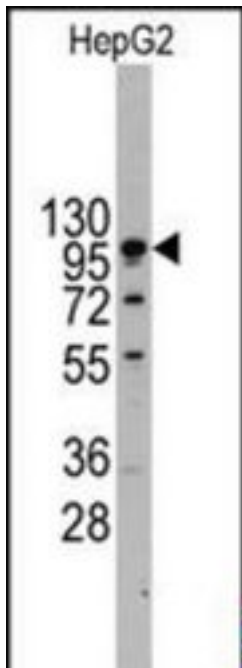
Immunofluorescence of CDH4 Antibody (N-term) Antibody with paraffin-embedded human brain tissue. 0.025 mg/ml primary antibody was followed by FITC-conjugated goat anti-rabbit IgG (whole molecule). FITC emits green fluorescence. Red counterstaining is PI.

Flow Cytometry Image:



Flow cytometry of HepG2 cells using CDH4 Antibody (N-term) (bottom histogram) compared to a negative control cell (top histogram). FITC-conjugated goat-anti-rabbit secondary antibodies were used for the analysis.

Western Blot Image:



Western blot of anti-CDH4 Antibody (N-term) in HepG2 cell line lysates (35 ug/lane). CDH4 (arrow) was detected using the purified Pab (1:60 dilution).

Requested From:

Japan

Laboratory Reagent For In Vitro Research Use Only

Not for resale without prior written consent from LifeSpan BioSciences, Inc.

Created on 9/24/2014

© 2014 LifeSpan BioSciences