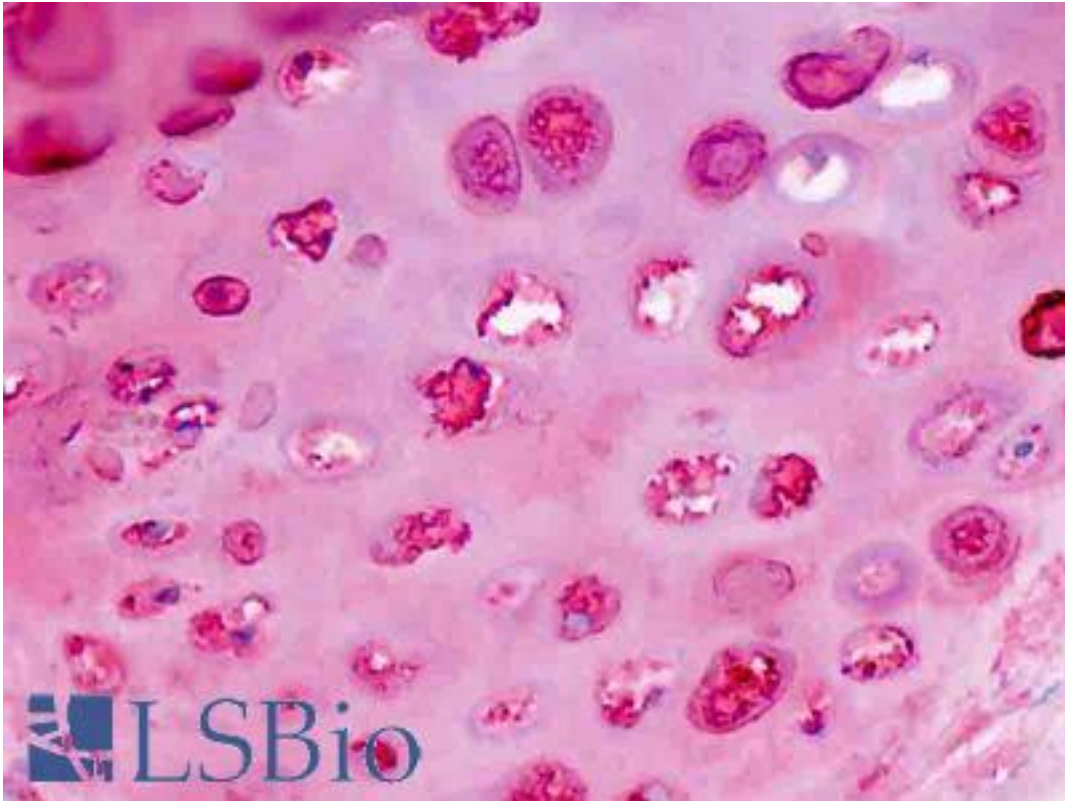


Proteoglycan, Cartilage, Adult Mouse anti-Human Monoclonal Antibody - LS-B8986 - LSBio	
CatalogID:	LS-B8986
Validation:	This antibody replaces catalog number LS-C75242. It has been validated for use in the following assays: IHC-P.
Target:	Proteoglycan, Cartilage, Adult
Host	Mouse
Clonality:	Monoclonal
Isotype:	IgG1
Immunogen Species:	Human
Antigen Type:	Protein
Immunogen:	Human adult cartilage proteoglycan.
Specificity:	Recognizes the short peptides substituted with keratan sulfate side chains and within the core protein of proteoglycans in articular cartilages, chicken limb bud and cornea. Does not cross-react with human fetal cartilage proteoglycans. Species cross-reactivity predicted: Human, bovine, canine and chicken.
Reactivity:	Human, Rabbit
Purification:	Ascites
Presentation:	Ascites
Recommended Storage:	Short term 4°C, long term aliquot and store at -20°C, avoid freeze thaw cycles. Store undiluted.
Usage Summary:	Suitable for use in Western Blot, ELISA, RIA and Immunohistochemistry. Western Blot: 1:50-1:100. ELISA: 1:600-1:1200. RIA: 1:10000-1:20000. Immunohistochemistry: 1:25-1:125.
Uses:	IHC - Paraffin (1:50), Western blot (1:50 - 1:100), ELISA (1:600 - 1:1200), Radioimmunoassay (1:10000 - 1:20000) (Optimal dilution to be determined by the researcher)
Size:	50 µl

Immunohistochemistry Image:



Human Lung, Chondrocytes: Formalin-Fixed, Paraffin-Embedded (FFPE)

Requested From:

Japan

Laboratory Reagent For In Vitro Research Use Only

Not for resale without prior written consent from LifeSpan BioSciences, Inc.

Created on 9/24/2014

© 2014 LifeSpan BioSciences