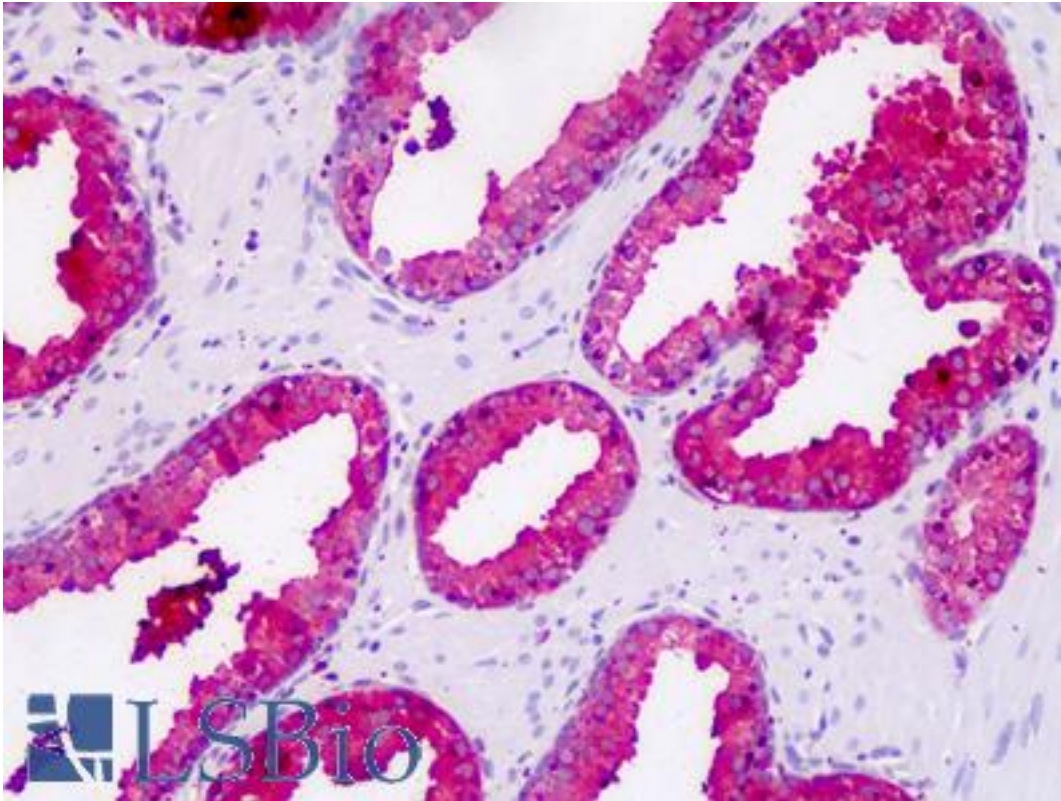


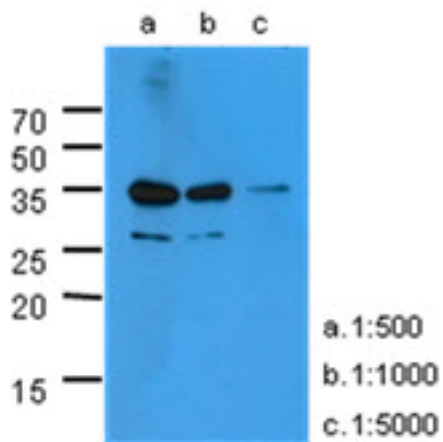
KLK3 / PSA Mouse anti-Human Monoclonal (AT1D10) Antibody - LS-B8973 - LSBio	
<b>CatalogID:</b>	LS-B8973
<b>Validation:</b>	This antibody replaces catalog number LS-C175813. It has been validated for use in the following assays: IHC-P.
<b>Target:</b>	kallikrein-related peptidase 3 (KLK3)
<b>Synonyms:</b>	KLK3 Antibody, APS Antibody, Gamma-seminoprotein Antibody, Kallikrein-3 Antibody, Kallikrein-related peptidase 3 Antibody, P-30 antigen Antibody, Prostate specific antigen Antibody, Prostate-specific antigen Antibody, PSA Antibody, Semenogelase Antibody, KLK2A1 Antibody, Seminolin Antibody
<b>Family / Subfamily:</b>	Protease / Serine S1
<b>Host</b>	KLK3 antibody was produced in Mouse
<b>Clonality:</b>	Monoclonal
<b>Isotype:</b>	IgG1,k
<b>Clone Name:</b>	AT1D10
<b>Immunogen Species:</b>	KLK3 / PSA antibody was raised against Human
<b>Antigen Type:</b>	Recombinant protein
<b>Immunogen:</b>	KLK3 / PSA antibody was raised against recombinant human KLK3(25-261aa) purified from E. coli.
<b>Specificity:</b>	Human PSA
<b>Reactivity:</b>	Human
<b>Purification:</b>	Protein G purified
<b>Presentation:</b>	PBS, pH 7.4, 0.1% sodium azide
<b>Recommended Storage:</b>	Can be stored at 4°C. For long term storage, aliquot and store at -20°C. Avoid repeated freezing and thawing cycles.
<b>Uses:</b>	IHC - Paraffin (10 µg/ml), Western blot (1:500 - 1:3000), ELISA (Optimal dilution to be determined by the researcher)
<b>Size:</b>	50 µl
<b>Concentration:</b>	1 mg/ml

**Immunohistochemistry Image:**



Human Prostate: Formalin-Fixed, Paraffin-Embedded (FFPE)

**Western Blot Image:**



Western Blot: The extracts of PC-3 (40 ug) were resolved by SDS-PAGE, transferred to PVDF membrane and probed with anti-human KLK3 antibody (1:500-1:5000). Proteins were visualized using a goat anti-mouse secondary antibody conjugated to HRP and an ECL detection system.

Requested From:

Japan

Laboratory Reagent For In Vitro Research Use Only

Not for resale without prior written consent from LifeSpan BioSciences, Inc.

Created on 9/24/2014

© 2014 LifeSpan BioSciences