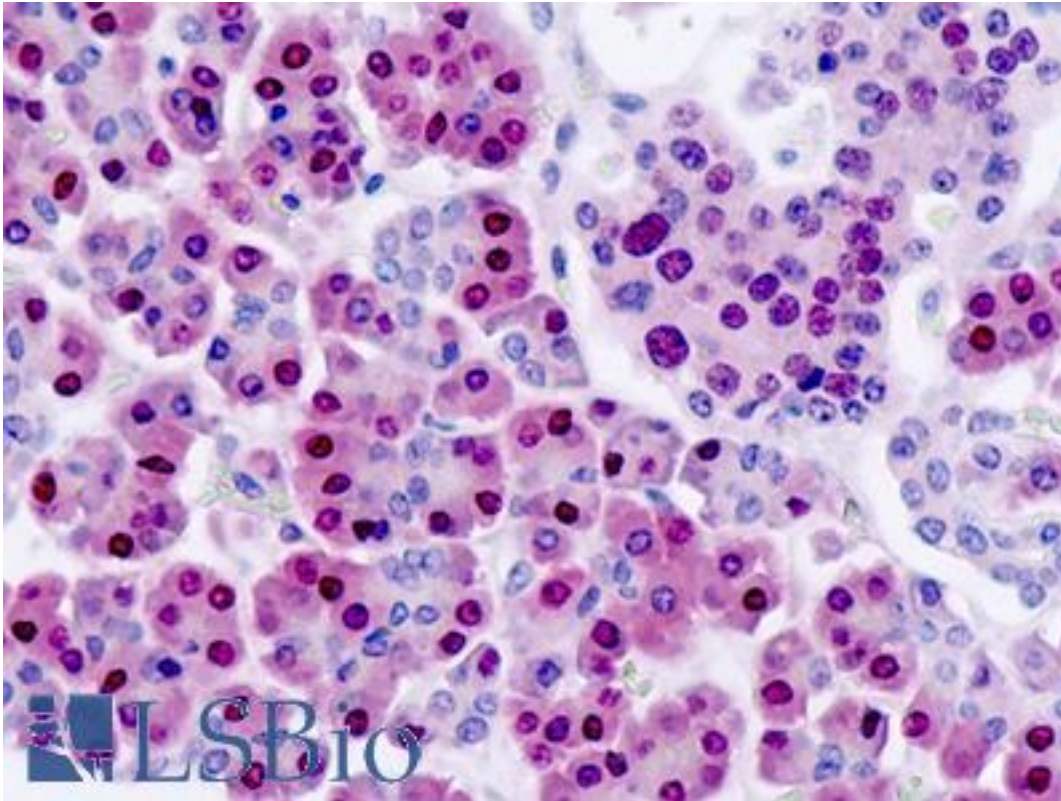


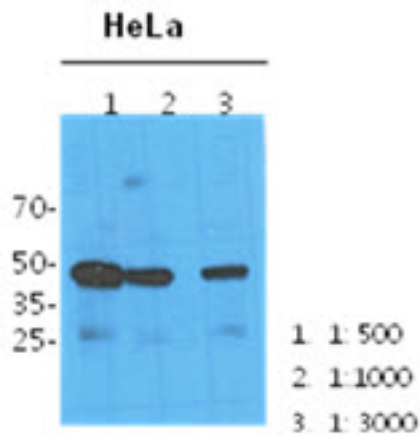
NANS Mouse anti-Human Monoclonal (AT1G6) Antibody - LS-B8963 - LSBio	
CatalogID:	LS-B8963
Validation:	This antibody replaces catalog number LS-C175795. It has been validated for use in the following assays: IHC-P.
Target:	N-acetylneuraminic acid synthase (NANS)
Synonyms:	NANS Antibody, SAS Antibody, Sialic acid phosphate synthase Antibody, Sialic acid synthase Antibody, N-acetylneuraminate synthase Antibody
Host	NANS antibody was produced in Mouse
Clonality:	Monoclonal
Isotype:	IgG1,k
Clone Name:	AT1G6
Immunogen Species:	NANS antibody was raised against Human
Antigen Type:	Recombinant protein
Immunogen:	NANS antibody was raised against recombinant human NANS (1-359aa) purified from E. coli.
Specificity:	Human NANS
Reactivity:	Human
Purification:	Protein G purified
Presentation:	PBS, pH 7.4, 0.1% sodium azide
Recommended Storage:	Can be stored at 4°C. For long term storage, aliquot and store at -20°C. Avoid repeated freezing and thawing cycles.
Uses:	IHC - Paraffin (10 µg/ml), Western blot (1:1000), ELISA (Optimal dilution to be determined by the researcher)
Size:	50 µl
Concentration:	1 mg/ml

Immunohistochemistry Image:



Human Pancreas: Formalin-Fixed, Paraffin-Embedded (FFPE)

Western Blot Image:



Western Blot: The cell lysates (40 ug) were resolved by SDS-PAGE, transferred to PVDF membrane and probed with anti-human NANS antibody (1:100, 1:1000, 1:3000). Proteins were visualized using a goat anti-mouse secondary antibody conjugated to HRP and an ECL detection system.

Requested From:

Japan

Laboratory Reagent For In Vitro Research Use Only

Not for resale without prior written consent from LifeSpan BioSciences, Inc.

Created on 9/24/2014

© 2014 LifeSpan BioSciences