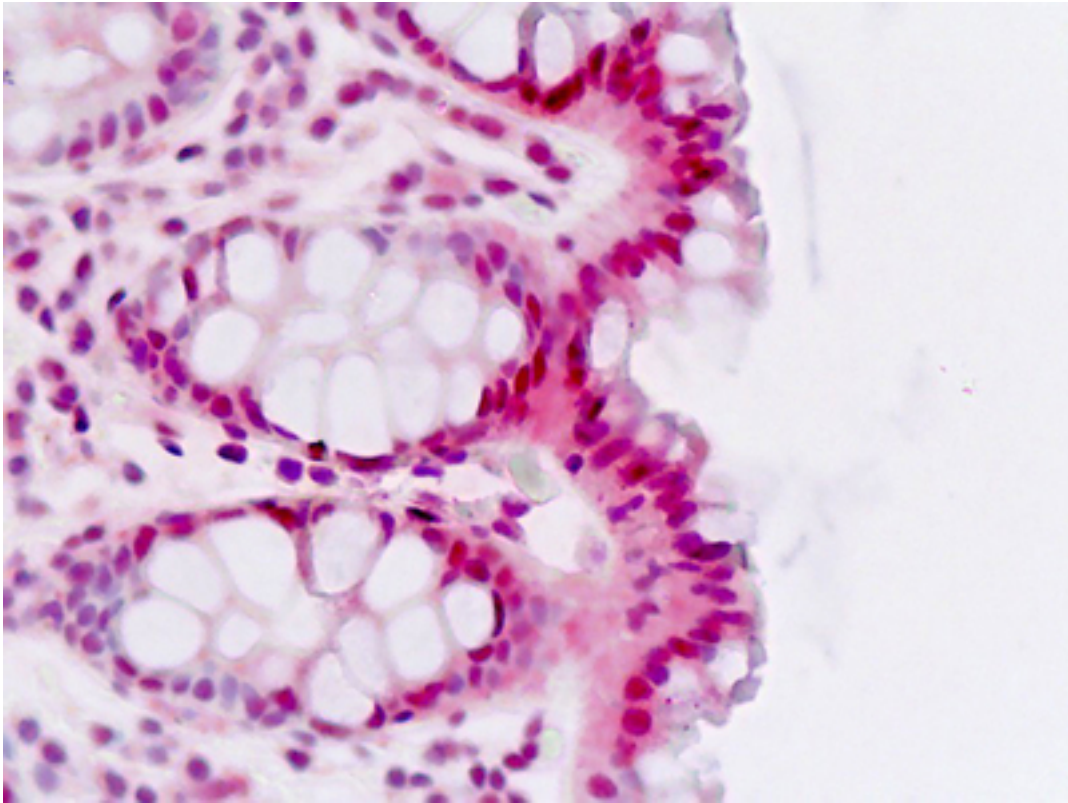


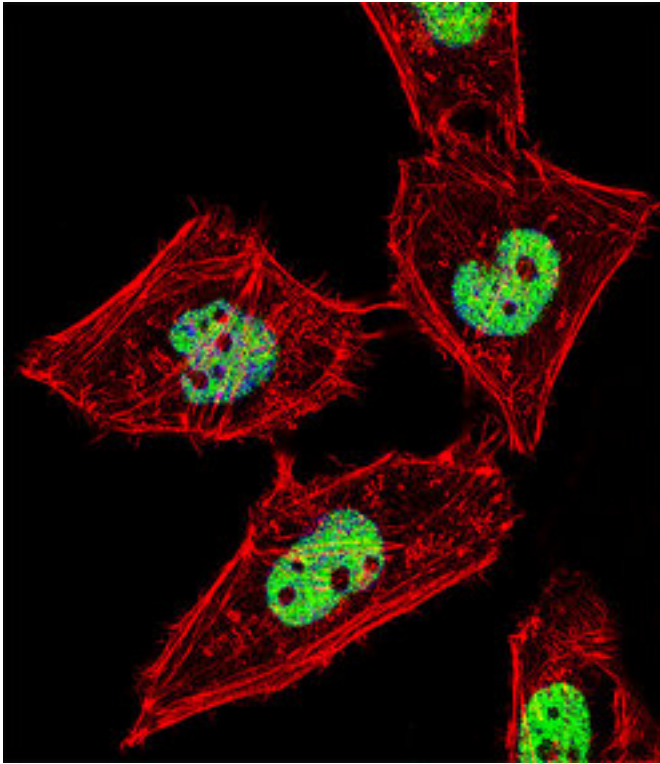
RORA / ROR Alpha Rabbit anti-Human Polyclonal (Thr216) Antibody - LS-B8962 - LSBio	
CatalogID:	LS-B8962
Validation:	This antibody replaces catalog number LS-C96638. It has been validated for use in the following assays: IHC-P.
Target:	RAR-related orphan receptor A (RORA)
Synonyms:	RORA Antibody, Nuclear receptor ROR-alpha Antibody, Nuclear receptor RZR-alpha Antibody, Roralpha Antibody, Transcription factor RZR-alpha Antibody, RAR-related orphan receptor A Antibody, ROR-alpha Antibody, ROR3 Antibody, RZRA Antibody, NR1F1 Antibody, ROR Alpha Antibody, RZR-ALPHA Antibody
Family / Subfamily:	NHR / NR1 Thyroid hormone-like
Host	RORA antibody was produced in Rabbit
Clonality:	Polyclonal
Immunogen Species:	RORA / ROR Alpha antibody was raised against Human
Antigen Type:	Synthetic peptide
Immunogen:	RORA / ROR Alpha antibody was raised against kLH conjugated synthetic peptide corresponding to amino acid residues surrounding T216 of human RORA.
Epitope:	Thr216
Reactivity:	Human
Purification:	Immunoaffinity purified
Presentation:	PBS, 0.09% sodium azide
Recommended Storage:	Maintain refrigerated at 2-8°C for up to 6 months. For long term storage store at -20°C.
Uses:	IHC - Paraffin (10 µg/ml), Immunofluorescence (1:10 - 1:50), Western blot (1:1000) (Optimal dilution to be determined by the researcher)
Size:	50 µg

Immunohistochemistry Image:



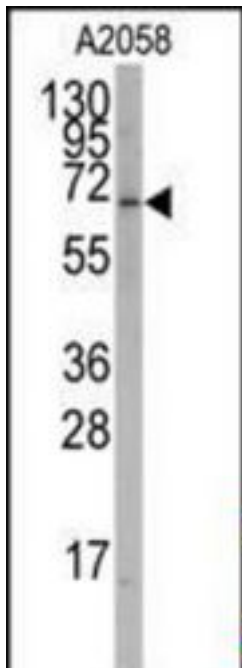
Human Colon: Formalin-Fixed, Paraffin-Embedded (FFPE)

Immunofluorescence Image:



Fluorescent confocal image of HeLa cell stained with RORA Antibody (T216). HeLa cells were fixed with 4% PFA (20 min), permeabilized with Triton X-100 (0.1%, 10 min), then incubated with RORA primary antibody (1:25, 1 h at 37°C). For secondary antibody, Alexa Fluor 488 conjugated donkey anti-rabbit antibody (green) was used (1:400, 50 min at 37°C). Cytoplasmic actin was counterstained with Alexa Fluor 555 (red) conjugated Phalloidin (7 units/ml, 1 h at 37°C). Nuclei were counterstained with DAPI (blue) (10 µg/ml, 10 min). RORA immunoreactivity is localized to Nucleus significantly.

Western Blot Image:



Western blot of anti-RORA Antibody (T216) LS-B8962 in A2058 cell line lysates (35 ug/lane). RORA (arrow) was detected using the purified Pab.

Requested From:

Japan

Laboratory Reagent For In Vitro Research Use Only

Not for resale without prior written consent from LifeSpan BioSciences, Inc.

Created on 9/24/2014

© 2014 LifeSpan BioSciences