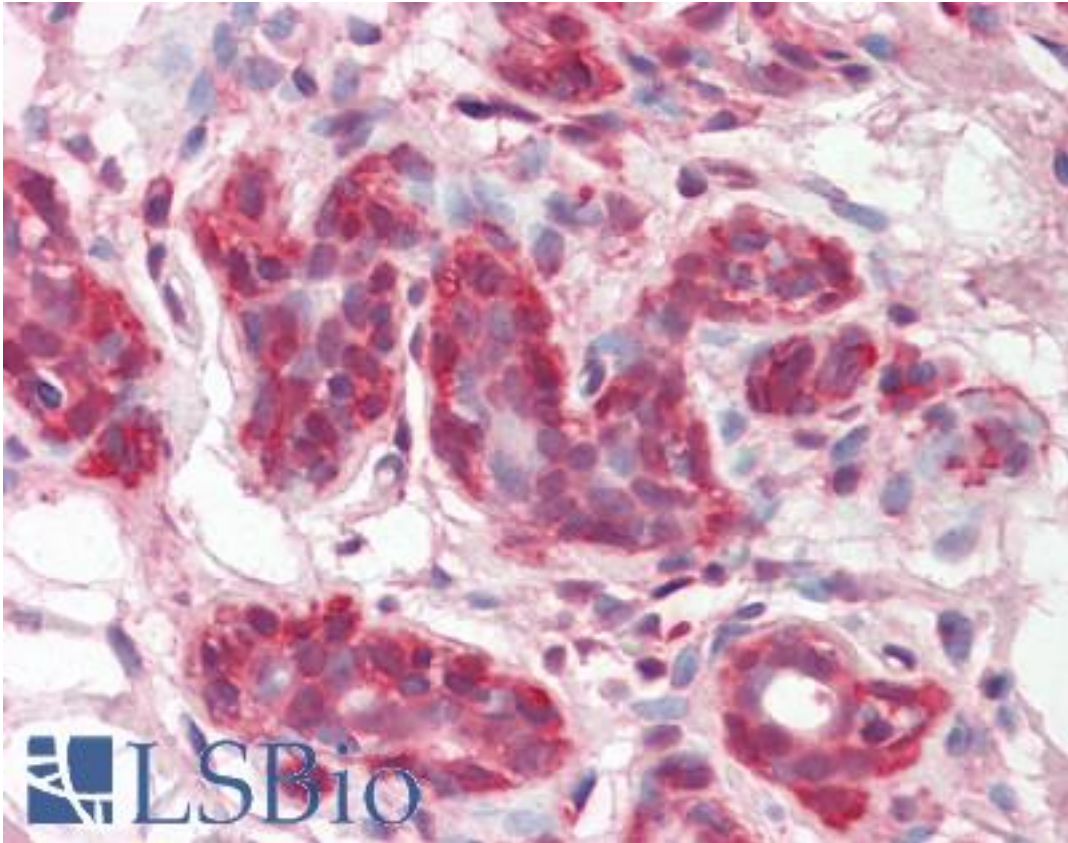


**AML1 / RUNX1 Mouse anti-Human Monoclonal (2B5) Antibody - LS-B8941 - LSBio**

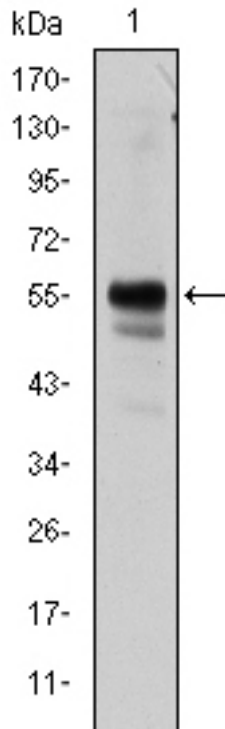
<b>CatalogID:</b>	LS-B8941
<b>Validation:</b>	This antibody replaces catalog number LS-C169342. It has been validated for use in the following assays: IHC-P.
<b>Target:</b>	runt-related transcription factor 1 (RUNX1)
<b>Synonyms:</b>	RUNX1 Antibody, AMLCR1 Antibody, Aml1 oncogene Antibody, AML1 Antibody, AML1-EVI-1 Antibody, CBF-alpha-2 Antibody, CBFA2 Antibody, Acute myeloid leukemia 1 Antibody, EVI-1 Antibody, PEBP2A2 Antibody, PEA2-alpha B Antibody, AML1-EVI-1 fusion protein Antibody, Oncogene AML-1 Antibody, PEBP2-alpha B Antibody, PEBP2aB Antibody
<b>Host</b>	RUNX1 antibody was produced in Mouse
<b>Clonality:</b>	Monoclonal
<b>Isotype:</b>	IgG1
<b>Clone Name:</b>	2B5
<b>Immunogen Species:</b>	AML1 / RUNX1 antibody was raised against Human
<b>Antigen Type:</b>	Synthetic peptide
<b>Immunogen:</b>	AML1 / RUNX1 antibody was raised against synthesized peptide of human RUNX1.
<b>Specificity:</b>	Human AML1 / RUNX1
<b>Reactivity:</b>	Human
<b>Purification:</b>	Ascites
<b>Presentation:</b>	Ascites, 0.03% sodium azide
<b>Recommended Storage:</b>	Long term: -20°C; Short term: +4°C; Avoid freeze-thaw cycles.
<b>Uses:</b>	IHC - Paraffin (1:200), Western blot (1:500 - 1:2000), ELISA (1:10000) (Optimal dilution to be determined by the researcher)
<b>Size:</b>	50 µl

**Immunohistochemistry Image:**



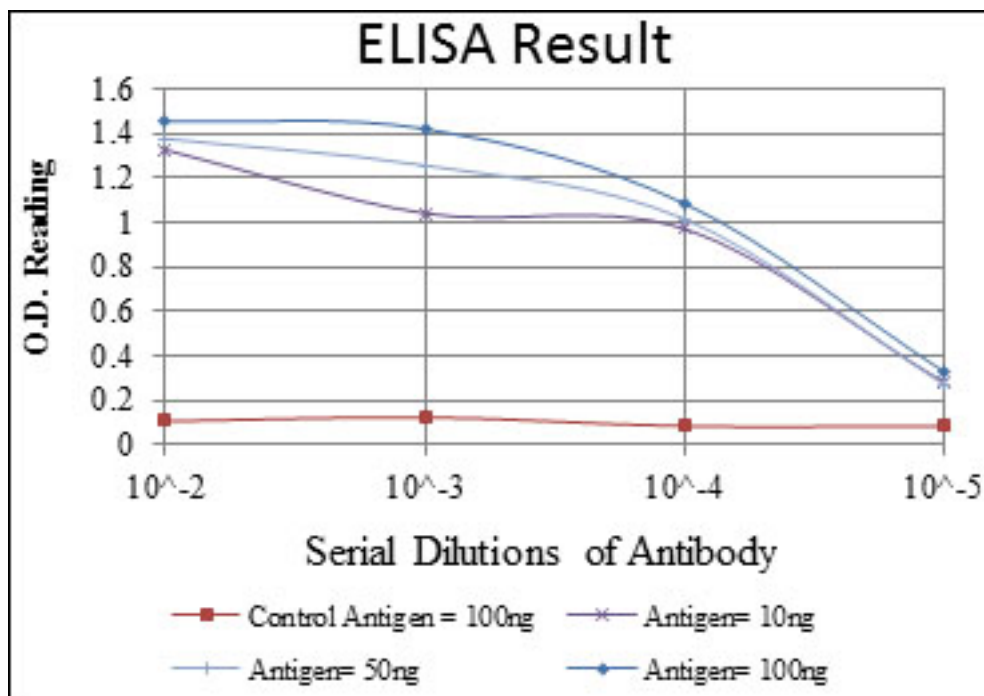
Human Breast: Formalin-Fixed, Paraffin-Embedded (FFPE)

**Western Blot Image:**



Western blot of RUNX1 mouse mAb against Jurkat cell lysate.

**ELISA Image:**



Red: Control Antigen (100ng); Purple: Antigen (10ng); Green: Antigen (50ng); Blue: Antigen (100ng);

Requested From:

Japan

Laboratory Reagent For In Vitro Research Use Only

Not for resale without prior written consent from LifeSpan BioSciences, Inc.

Created on 9/24/2014

© 2014 LifeSpan BioSciences