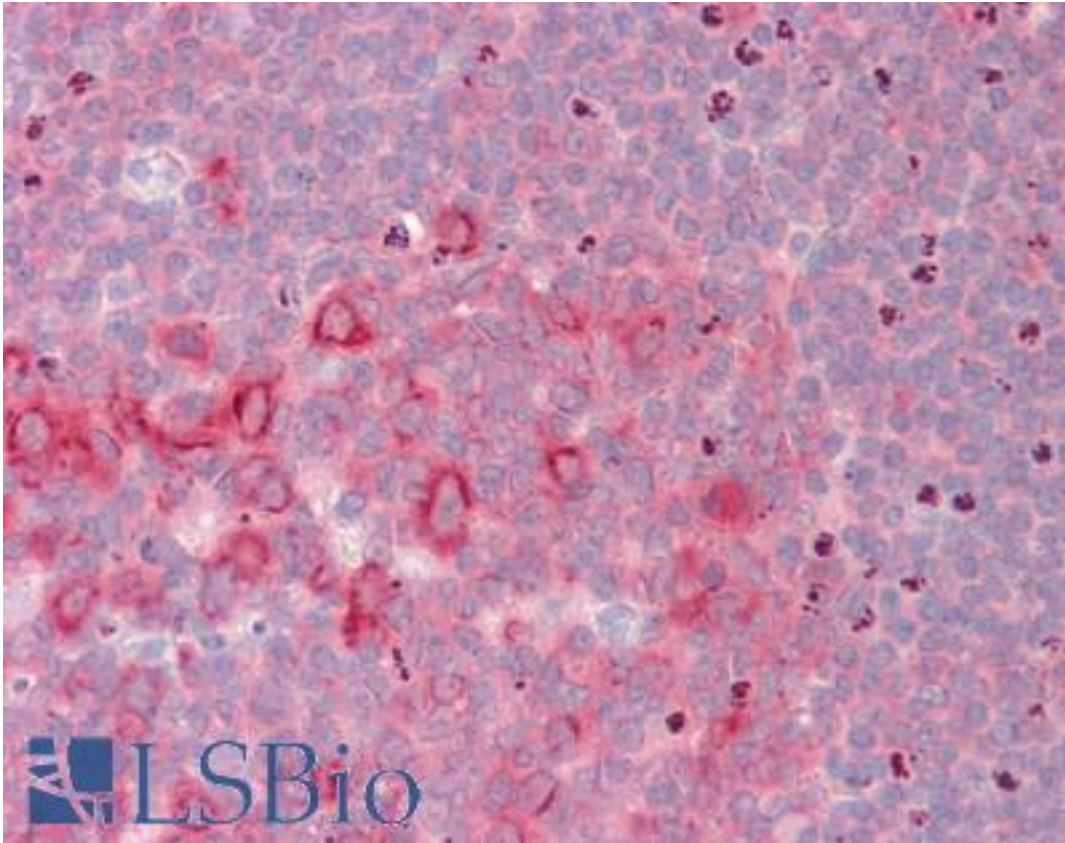


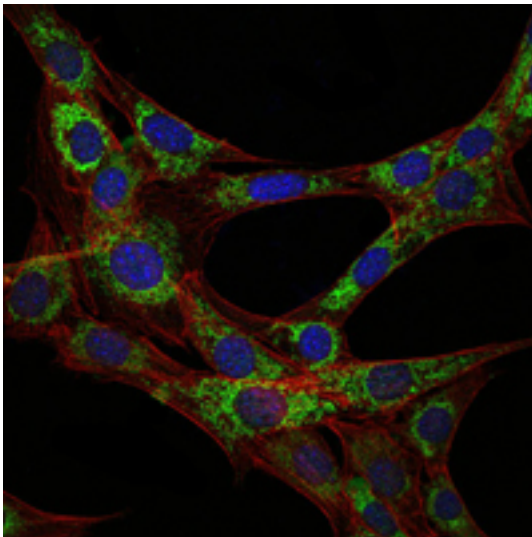
EEF2 / Elongation Factor 2 Mouse anti-Human Monoclonal (5B6) Antibody - LS-B8940 - LSBio	
CatalogID:	LS-B8940
Validation:	This antibody replaces catalog number LS-C169340. It has been validated for use in the following assays: IHC-P.
Target:	eukaryotic translation elongation factor 2 (EEF2)
Synonyms:	EEF2 Antibody, EEF-2 Antibody, EF-2 Antibody, Elongation factor 2 Antibody, Polypeptidyl-tRNA translocase Antibody, EF2 Antibody
Host	EEF2 antibody was produced in Mouse
Clonality:	Monoclonal
Isotype:	IgG1
Clone Name:	5B6
Immunogen Species:	EEF2 / Elongation Factor 2 antibody was raised against Human
Antigen Type:	Recombinant protein
Immunogen:	EEF2 / Elongation Factor 2 antibody was raised against purified recombinant fragment of human EEF2 expressed in E. coli.
Specificity:	Human Elongation Factor 2 / EEF2
Reactivity:	Human
Purification:	Ascites
Presentation:	Ascites, 0.03% sodium azide
Recommended Storage:	Long term: -20°C; Short term: +4°C; Avoid freeze-thaw cycles.
Uses:	IHC - Paraffin (1:200), ICC (1:200 - 1:1000), Immunofluorescence (1:1000), Western blot (1:500 - 1:2000), ELISA (1:10000) (Optimal dilution to be determined by the researcher)
Size:	50 µl

Immunohistochemistry Image:



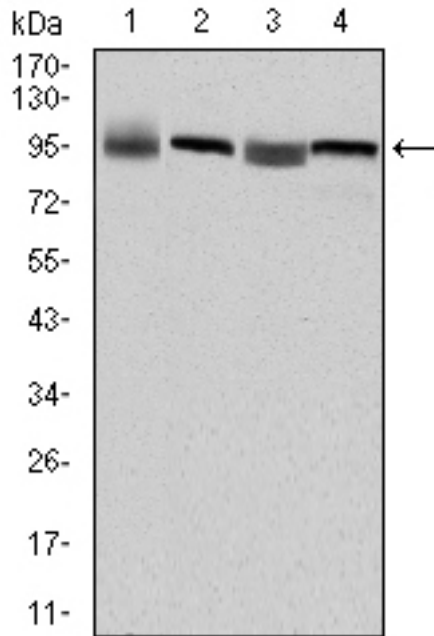
Human Tonsil: Formalin-Fixed, Paraffin-Embedded (FFPE)

Immunofluorescence Image:



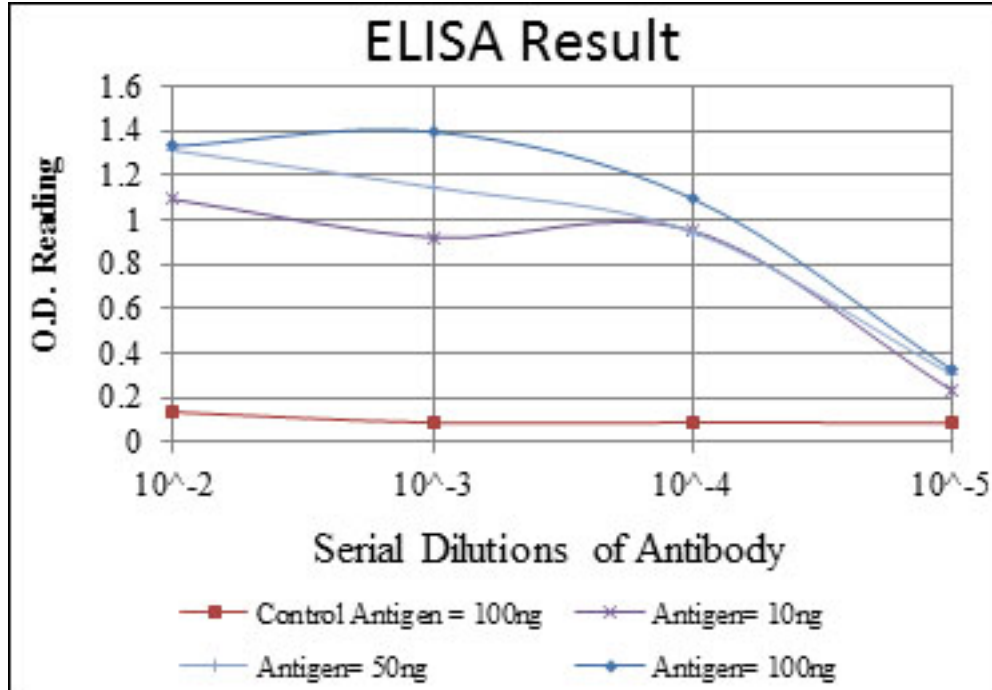
Immunofluorescence of 3T3-L1 cells using EEF2 mouse mAb (green). Blue: DRAQ5 fluorescent DNA dye. Red: Actin filaments have been labeled with Alexa Fluor-555 phalloidin.

Western Blot Image:



Western blot of EEF2 mouse mAb against HepG2 (1), HeLa (2), HEK293 (3) and A431 (4) cell lysate.

ELISA Image:



Red: Control Antigen (100ng); Purple: Antigen (10ng); Green: Antigen (50ng); Blue: Antigen (100ng);

Requested From:

Japan

Laboratory Reagent For In Vitro Research Use Only

Not for resale without prior written consent from LifeSpan BioSciences, Inc.

Created on 9/24/2014

© 2014 LifeSpan BioSciences