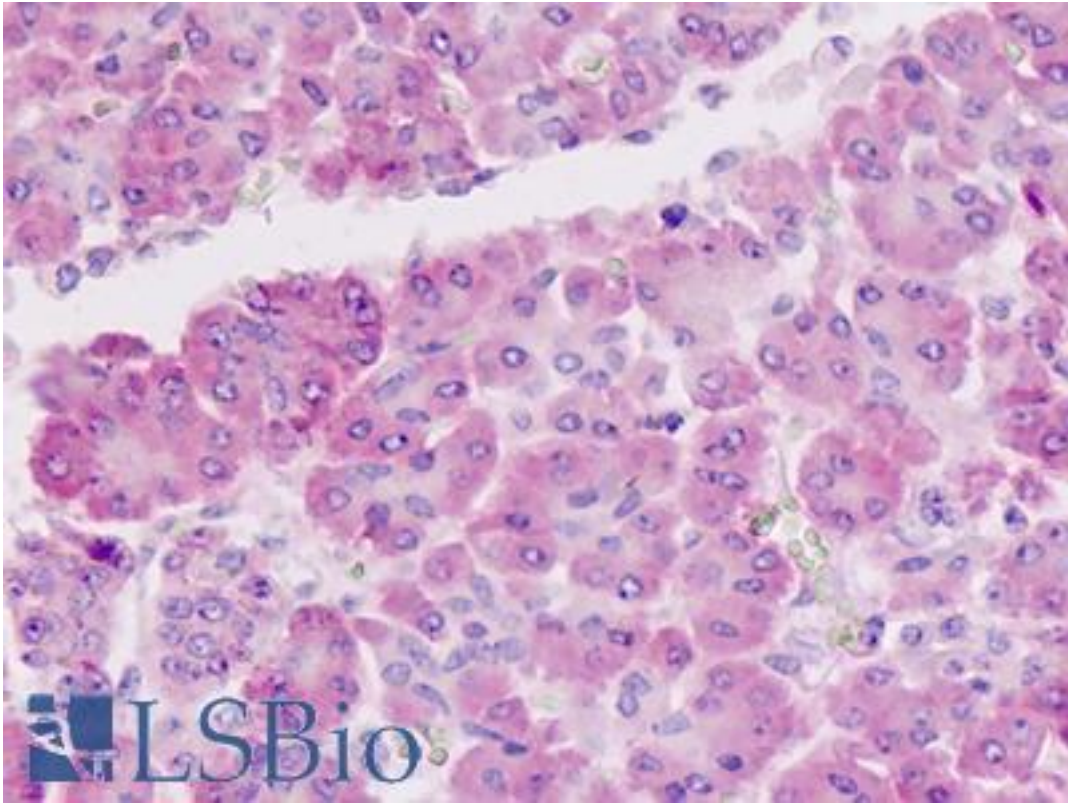


EIF3E Rabbit anti-Human Polyclonal Antibody - LS-B8931 - LSBio

CatalogID:	LS-B8931
Validation:	This antibody replaces catalog number LS-C170818. It has been validated for use in the following assays: IHC-P.
Target:	eukaryotic translation initiation factor 3, subunit E (EIF3E)
Synonyms:	EIF3E Antibody, EIF3-p46 Antibody, INT6 Antibody, EIF-3 p48 Antibody, EIF3-P48 Antibody, EIF3S6 Antibody
Host	EIF3E antibody was produced in Rabbit
Clonality:	Polyclonal
Immunogen Species:	EIF3E antibody was raised against Human
Antigen Type:	Synthetic peptide
Immunogen:	EIF3E antibody was raised against synthetic peptide derived from N terminal part of human eIF3e protein
Reactivity:	Human
Purification:	Protein A purified
Presentation:	Tris 0,1M, glycine 0,1M, sucrose 2%
Recommended Storage:	Store at -20°C prior to reconstitution. After reconstitution under sterile conditions aliquot and freeze at -20°C. Avoid frequent freeze thaws. Store undiluted.
Uses:	IHC - Paraffin (10 µg/ml), Western blot (1:500 - 1:2000), Immunoprecipitation (1:100 - 1:1000) (Optimal dilution to be determined by the researcher)
Size:	100 µg

Immunohistochemistry Image:



Human Pancreas, Formalin-Fixed, Paraffin-Embedded (FFPE)

Requested From:

Japan

Laboratory Reagent For In Vitro Research Use Only

Not for resale without prior written consent from LifeSpan BioSciences, Inc.

Created on 9/24/2014

© 2014 LifeSpan BioSciences