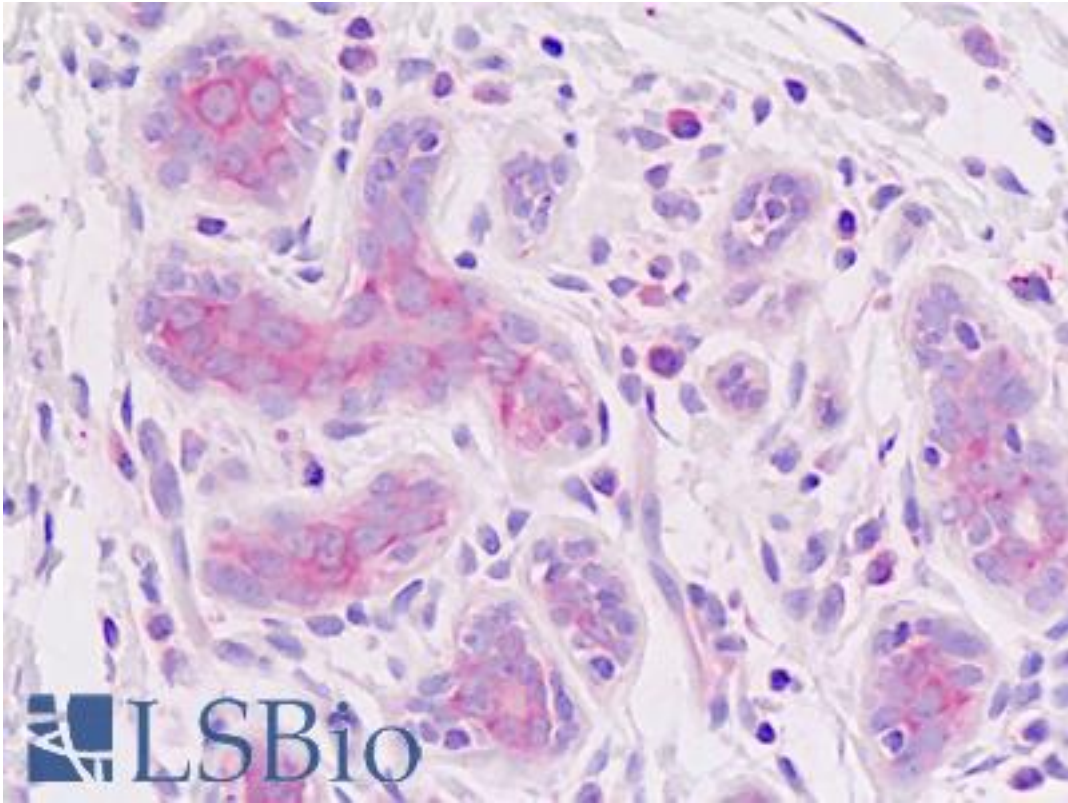


**EIF3E Rabbit anti-Human Polyclonal Antibody - LS-B8930 - LSBio**

<b>CatalogID:</b>	LS-B8930
<b>Validation:</b>	This antibody replaces catalog number LS-C170817. It has been validated for use in the following assays: IHC-P.
<b>Target:</b>	eukaryotic translation initiation factor 3, subunit E (EIF3E)
<b>Synonyms:</b>	EIF3E Antibody, EIF3-p46 Antibody, INT6 Antibody, EIF-3 p48 Antibody, EIF3-P48 Antibody, EIF3S6 Antibody
<b>Host</b>	EIF3E antibody was produced in Rabbit
<b>Clonality:</b>	Polyclonal
<b>Immunogen Species:</b>	EIF3E antibody was raised against Human
<b>Antigen Type:</b>	Synthetic peptide
<b>Immunogen:</b>	EIF3E antibody was raised against synthetic peptide derived from C terminal part of human eIF3e protein
<b>Reactivity:</b>	Human
<b>Purification:</b>	Protein A purified
<b>Presentation:</b>	Tris 0,1M, glycine 0,1M, sucrose 2%
<b>Recommended Storage:</b>	Store at -20°C prior to reconstitution. After reconstitution under sterile conditions aliquot and freeze at -20°C. Avoid frequent freeze thaws. Store undiluted.
<b>Uses:</b>	IHC - Paraffin (10 µg/ml), Western blot (1:500 - 1:2000), Immunoprecipitation (1:100 - 1:1000) (Optimal dilution to be determined by the researcher)
<b>Size:</b>	100 µg

**Immunohistochemistry Image:**



Human Breast, Epithelium: Formalin-Fixed, Paraffin-Embedded (FFPE)

**Requested From:**

Japan

Laboratory Reagent For In Vitro Research Use Only

Not for resale without prior written consent from LifeSpan BioSciences, Inc.

Created on 9/24/2014

© 2014 LifeSpan BioSciences