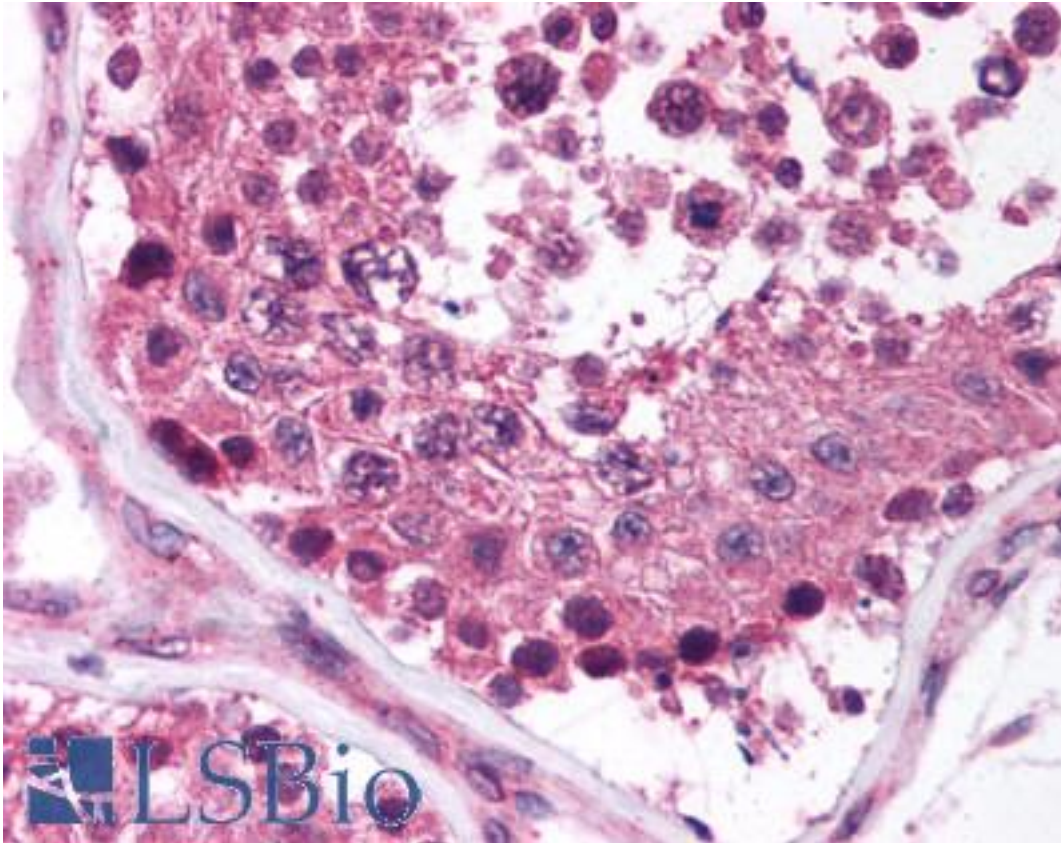


MAGEF1 Rabbit anti-Human Polyclonal (aa288-302) Antibody - LS-B893 - LSBio	
CatalogID:	LS-B893
Validation:	This antibody replaces catalog number LS-C3089. It has been validated for use in the following assays: IHC.
Target:	melanoma antigen family F, 1 (MAGEF1)
Synonyms:	MAGEF1 Antibody, Melanoma-associated antigen F1 Antibody, MAGE-F1 antigen Antibody, Melanoma antigen family F, 1 Antibody
Host	MAGEF1 antibody was produced in Rabbit
Clonality:	Polyclonal
Immunogen Species:	MAGEF1 antibody was raised against Human
Antigen Type:	Synthetic peptide
Immunogen:	MAGEF1 antibody was raised against synthetic peptide from human MAGEF1.
Specificity:	Amino acids 288 to 302 of human MAGEF1
Epitope:	aa288-302
Reactivity:	Human
Purification:	Protein G purified
Presentation:	PBS, 0.1% sodium azide.
Recommended Storage:	Long term: -20°C; Short term: +4°C. Avoid repeat freeze-thaw cycles.
Usage Summary:	Immunohistochemistry: LS-B893 was validated for use in immunohistochemistry on a panel of 21 formalin-fixed, paraffin-embedded (FFPE) human tissues after heat induced antigen retrieval in pH 6.0 citrate buffer. After incubation with the primary antibody, slides were incubated with biotinylated secondary antibody, followed by alkaline phosphatase-streptavidin and chromogen. The stained slides were evaluated by a pathologist to confirm staining specificity. The optimal working concentration for LS-B893 was determined to be 5 ug/ml.
Uses:	IHC - Paraffin (5 µg/ml), ELISA (1:000 - 1:1000) (Optimal dilution to be determined by the researcher)
Size:	50 µg
Concentration:	1 mg/ml

Immunohistochemistry Image:



Anti-MAGEF1 antibody IHC of human testis. Immunohistochemistry of formalin-fixed, paraffin-embedded tissue after heat-induced antigen retrieval. Antibody LS-B893 concentration 5 ug/ml.

Requested From:

Japan

Laboratory Reagent For In Vitro Research Use Only

Not for resale without prior written consent from LifeSpan BioSciences, Inc.

Created on 9/24/2014

© 2014 LifeSpan BioSciences