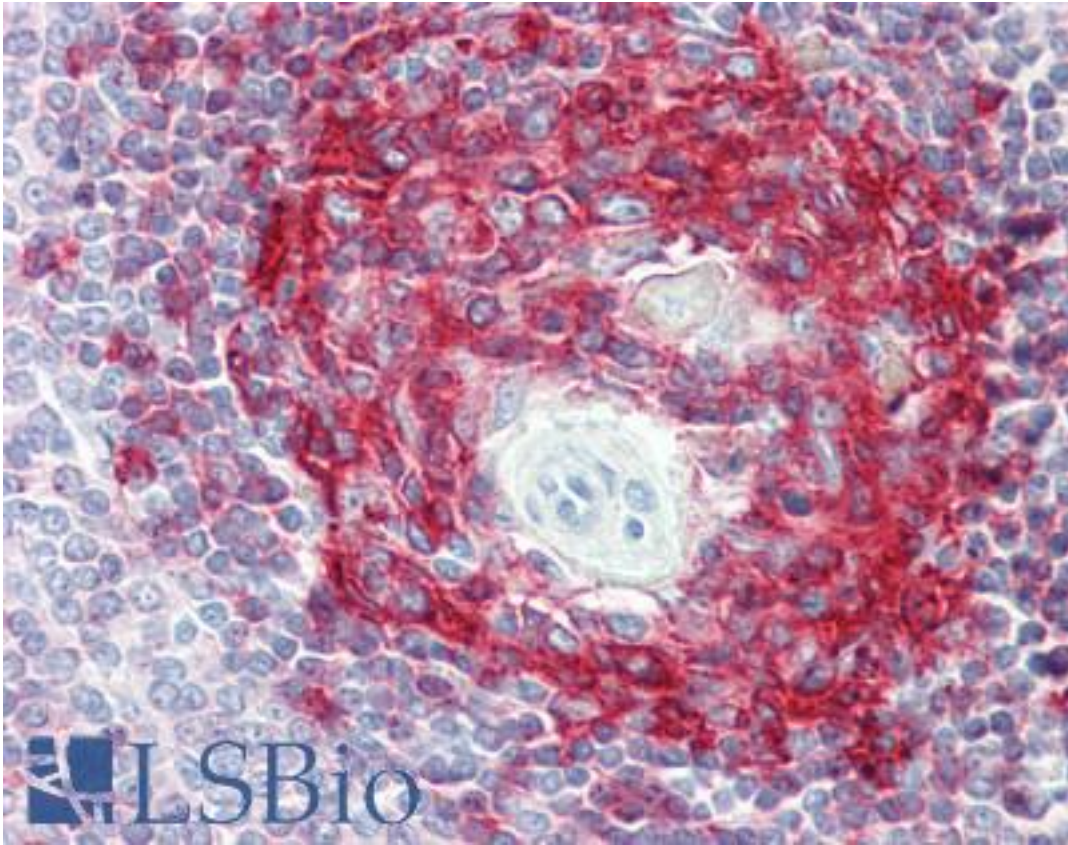


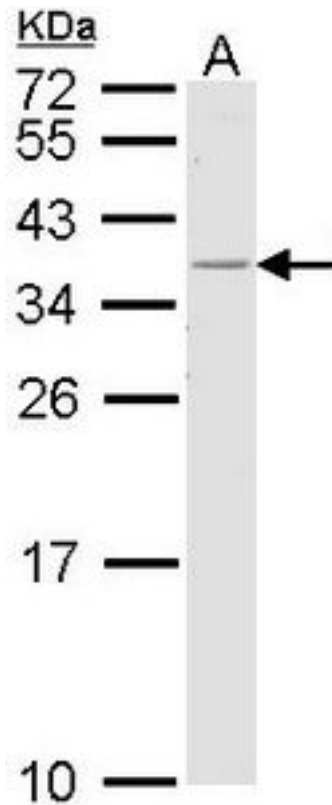
HLA-DR Rabbit anti-Human Polyclonal Antibody - LS-B8929 - LSBio	
<b>CatalogID:</b>	LS-B8929
<b>Validation:</b>	This antibody replaces catalog number LS-C109521. It has been validated for use in the following assays: IHC-P.
<b>Target:</b>	MHC Class II HLA-DR
<b>Host</b>	MHC Class II HLA-DR antibody was produced in Rabbit
<b>Clonality:</b>	Polyclonal
<b>Immunogen Species:</b>	HLA-DR antibody was raised against Human
<b>Immunogen:</b>	HLA-DR antibody was raised against recombinant protein fragment containing a sequence corresponding to a region within amino acids 56 and 260 of Human HLA -DRB1.
<b>Specificity:</b>	Human HLA-DRB1. Predicted cross-reactivity based on amino acid sequence homology: mouse (82%), bovine (83%), cat (89%), dogs (86%), monkey (94%).
<b>Reactivity:</b>	Human
<b>Purification:</b>	Immunoaffinity purified
<b>Presentation:</b>	0.1 M Tris-glycine, pH 7, 20% Glycerol, 0.01% Thimerosal
<b>Recommended Storage:</b>	Aliquot and store at -20°C. Minimize freezing and thawing.
<b>Uses:</b>	IHC - Paraffin (10 µg/ml), Western blot (1:500 - 1:3000) (Optimal dilution to be determined by the researcher)
<b>Size:</b>	100 µl
<b>Concentration:</b>	0.43 mg/ml

**Immunohistochemistry Image:**



Human Spleen: Formalin-Fixed, Paraffin-Embedded (FFPE)

**Western Blot Image:**



Sample (30 ug of whole cell lysate). A: H1299. 12% SDS PAGE. HLA-DRB1 antibody diluted at 1:1000.

**Requested From:**

Japan

Laboratory Reagent For In Vitro Research Use Only

Not for resale without prior written consent from LifeSpan BioSciences, Inc.

Created on 9/24/2014

© 2014 LifeSpan BioSciences