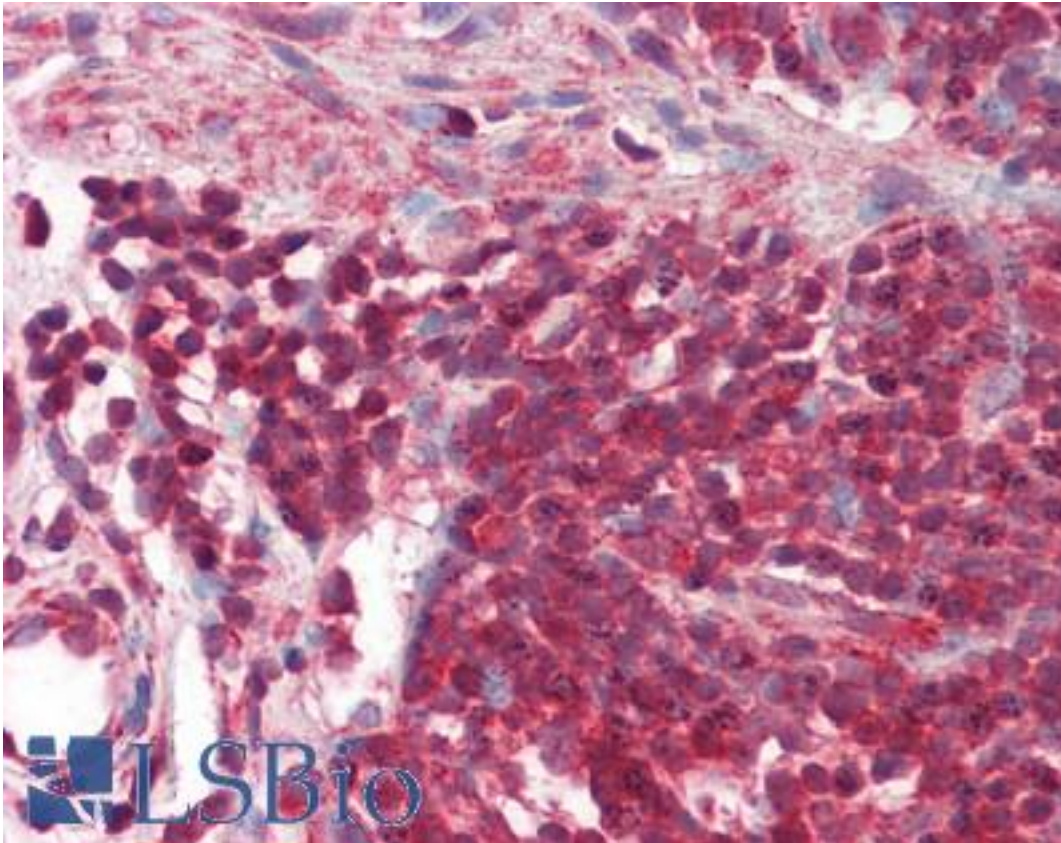


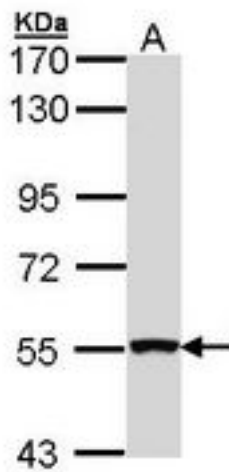
REL / C-Rel Rabbit anti-Human Polyclonal Antibody - LS-B8927 - LSBio	
CatalogID:	LS-B8927
Validation:	This antibody replaces catalog number LS-C109506. It has been validated for use in the following assays: IHC-P.
Target:	v-rel avian reticuloendotheliosis viral oncogene homolog
Synonyms:	REL Antibody, C-Rel Antibody, C-Rel proto-oncogene protein Antibody, I-Rel Antibody, Proto-oncogene c-Rel Antibody
Host	REL antibody was produced in Rabbit
Clonality:	Polyclonal
Immunogen Species:	REL / C-Rel antibody was raised against Human
Immunogen:	REL / C-Rel antibody was raised against recombinant fragment corresponding to a region within amino acids 1 and 209 of c-Rel (Uniprot ID#Q04864)
Specificity:	Human c-Rel. Predicted cross-reactivity based on amino acid sequence homology: mouse (93%).
Reactivity:	Human
Purification:	Immunoaffinity purified
Presentation:	0.1 M Tris-glycine, pH 7, 10% Glycerol, 0.01% Thimerosal
Recommended Storage:	Aliquot and store at -20°C. Minimize freezing and thawing.
Uses:	IHC - Paraffin (10 µg/ml), Western blot (1:500 - 1:3000) (Optimal dilution to be determined by the researcher)
Size:	50 µl
Concentration:	1 mg/ml

Immunohistochemistry Image:



Human Colon, MALT: Formalin-Fixed, Paraffin-Embedded (FFPE)

Western Blot Image:



Sample (30 ug of whole cell lysate). A: Hep G2. 7.5% SDS PAGE. REL antibody diluted at 1:1000.

Requested From:

Japan

Laboratory Reagent For In Vitro Research Use Only

Not for resale without prior written consent from LifeSpan BioSciences, Inc.

Created on 9/24/2014

© 2014 LifeSpan BioSciences