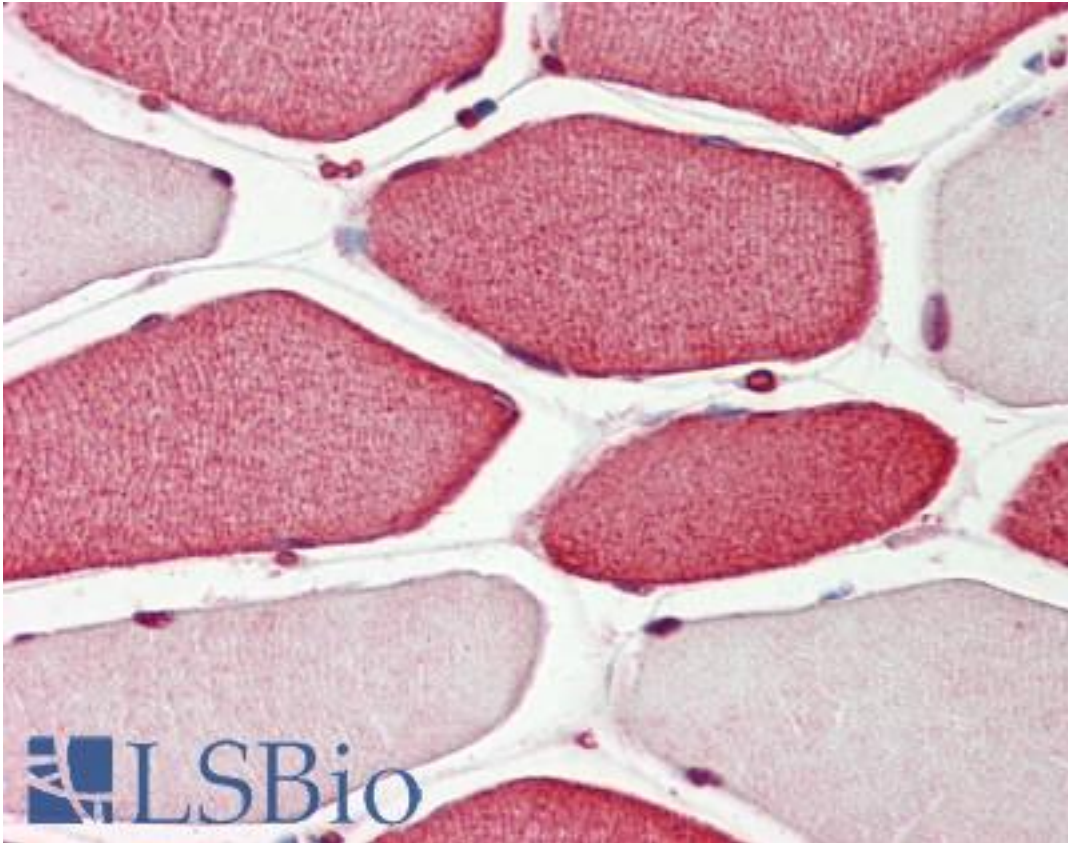


**APIP Rabbit anti-Human Polyclonal Antibody - LS-B8924 - LSBio**

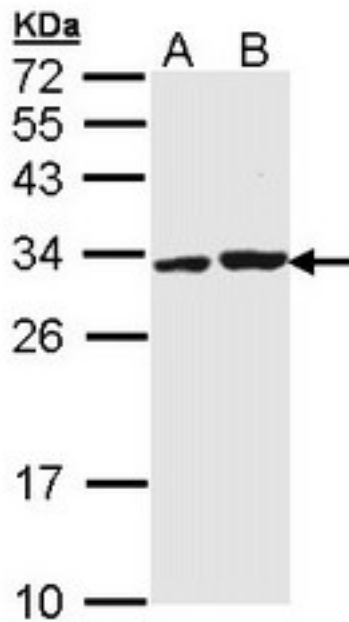
<b>CatalogID:</b>	LS-B8924
<b>Validation:</b>	This antibody replaces catalog number LS-C109452. It has been validated for use in the following assays: IHC-P.
<b>Target:</b>	APAF1 interacting protein (APIP)
<b>Synonyms:</b>	APIP Antibody, APAF1-interacting protein Antibody, APIP2 Antibody, CGI29 Antibody, CGI-29 Antibody, DJ179L10.2 Antibody, MTRu-1-P dehydratase Antibody, APAF1 interacting protein Antibody, MMRP19 Antibody
<b>Host</b>	APIP antibody was produced in Rabbit
<b>Clonality:</b>	Polyclonal
<b>Immunogen Species:</b>	APIP antibody was raised against Human
<b>Immunogen:</b>	APIP antibody was raised against recombinant fragment corresponding to a region within amino acids 1 and 242 of APIP (Uniprot ID#Q96GX9)
<b>Specificity:</b>	Human APIP
<b>Reactivity:</b>	Human
<b>Purification:</b>	Immunoaffinity purified
<b>Presentation:</b>	0.1 M Tris-glycine, pH 7, 20% Glycerol, 0.01% Thimerosal
<b>Recommended Storage:</b>	Aliquot and store at -20°C. Minimize freezing and thawing.
<b>Uses:</b>	IHC - Paraffin (10 µg/ml), Western blot (1:500 - 1:3000) (Optimal dilution to be determined by the researcher)
<b>Size:</b>	50 µl
<b>Concentration:</b>	1 mg/ml

**Immunohistochemistry Image:**



Human Skeletal Muscle: Formalin-Fixed, Paraffin-Embedded (FFPE)

**Western Blot Image:**



Sample (30 ug of whole cell lysate). A: Molt-4. B: Raji. 12% SDS PAGE. APIP antibody diluted at 1:1000.

**Requested From:**

Japan

Laboratory Reagent For In Vitro Research Use Only

Not for resale without prior written consent from LifeSpan BioSciences, Inc.

Created on 9/24/2014

© 2014 LifeSpan BioSciences