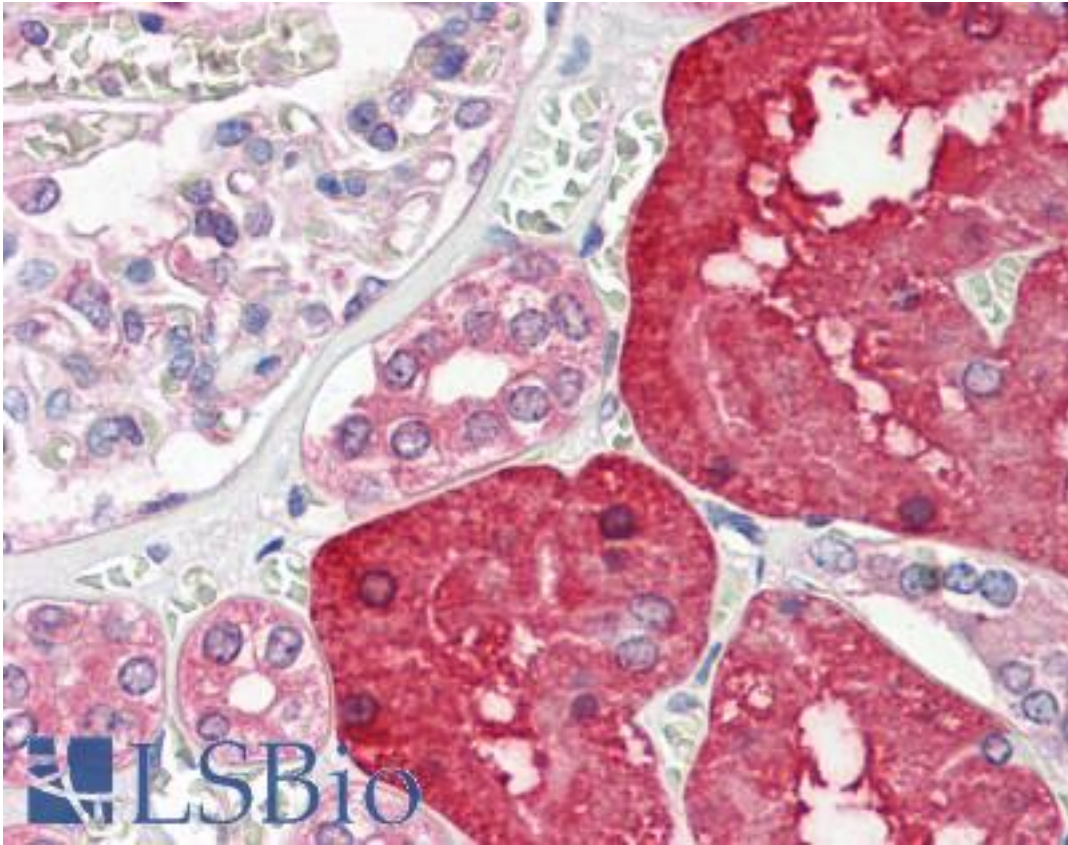


ACY1 / Aminoacylase 1 Rabbit anti-Human Polyclonal Antibody - LS-B8923 - LSBio

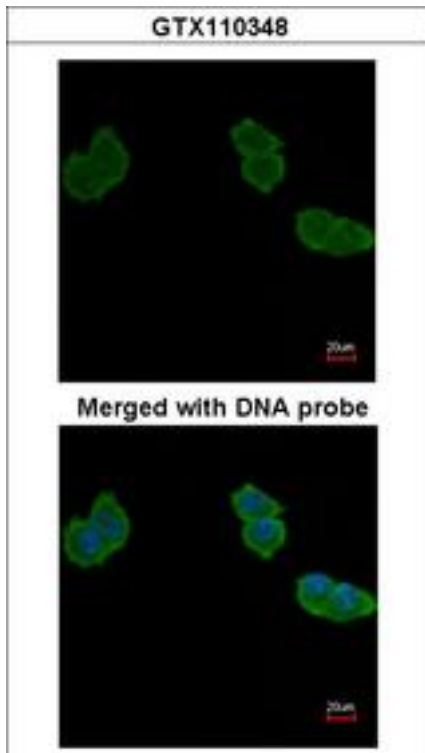
CatalogID:	LS-B8923
Validation:	This antibody replaces catalog number LS-C109439. It has been validated for use in the following assays: IHC-P.
Target:	aminoacylase 1 (ACY1)
Synonyms:	ACY1 Antibody, Aminoacylase-1 Antibody, ACY-1 Antibody, ACY1D Antibody, Acylase Antibody, Acylase I Antibody, Aminoacylase 1 Antibody, Aminoacylase Antibody, Aminoacylase I Antibody
Family / Subfamily:	Protease / Metallopeptidase M20
Host	ACY1 antibody was produced in Rabbit
Clonality:	Polyclonal
Immunogen Species:	ACY1 / Aminoacylase 1 antibody was raised against Human
Immunogen:	ACY1 / Aminoacylase 1 antibody was raised against recombinant protein fragment containing a sequence corresponding to a region within amino acids 89 and 336 of Human Aminoacylase-1.
Specificity:	Human Aminoacylase 1. Predicted cross-reactivity based on amino acid sequence homology: mouse (85%), rat (86%), bovine (87%), pig (86%).
Reactivity:	Human
Purification:	Immunoaffinity purified
Presentation:	0.1 M Tris-glycine, pH 7, 10% Glycerol, 0.01% Thimerosal
Recommended Storage:	Aliquot and store at -20°C. Minimize freezing and thawing.
Uses:	IHC - Paraffin (10 µg/ml), ICC, Immunofluorescence (1:100 - 1:200), Western blot (1:500 - 1:3000) (Optimal dilution to be determined by the researcher)
Size:	50 µl
Concentration:	1 mg/ml

Immunohistochemistry Image:



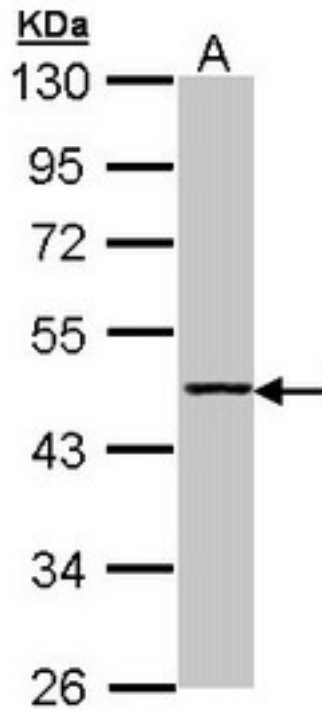
Human Kidney: Formalin-Fixed, Paraffin-Embedded (FFPE)

Immunofluorescence Image:



Immunofluorescence of paraformaldehyde-fixed A431, using Aminoacylase-1 antibody at 1:200 dilution.

Western Blot Image:



Sample (30 ug of whole cell lysate). A: H1299. 10% SDS PAGE. ACY1 antibody diluted at 1:1000.

Requested From:

Japan

Laboratory Reagent For In Vitro Research Use Only

Not for resale without prior written consent from LifeSpan BioSciences, Inc.

Created on 9/24/2014

© 2014 LifeSpan BioSciences