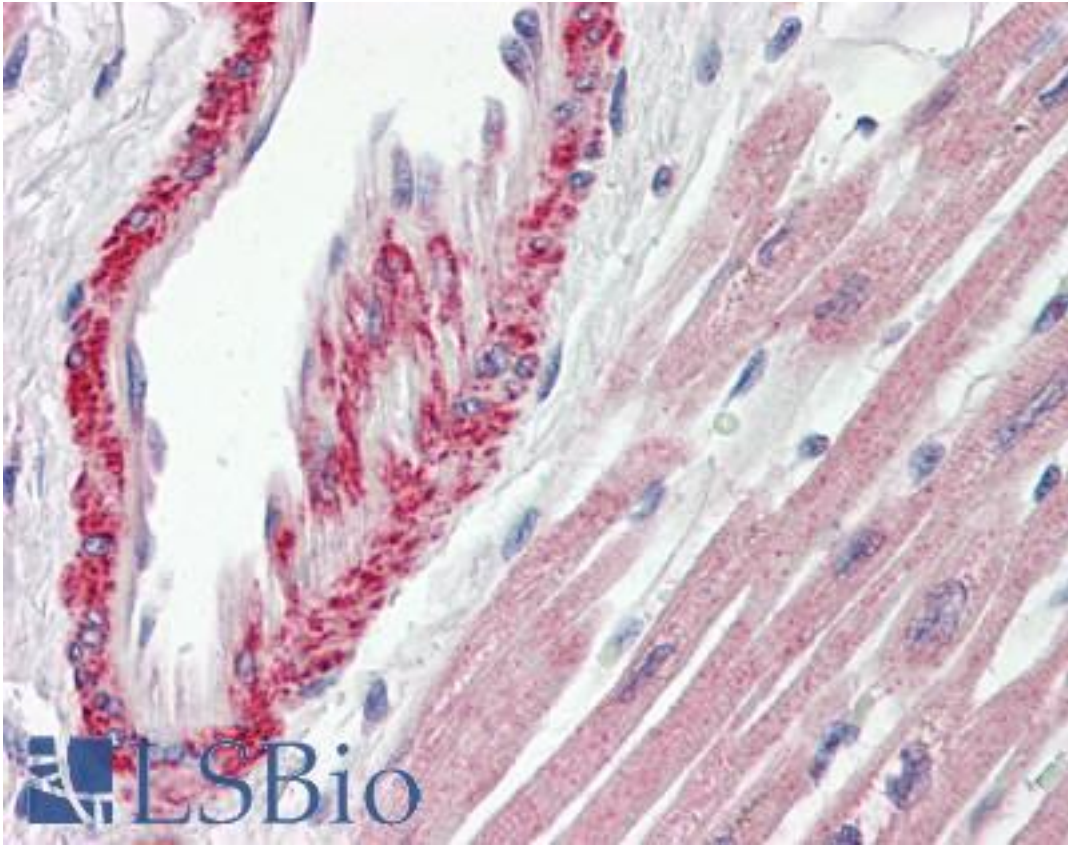


AP1S2 Rabbit anti-Human Polyclonal Antibody - LS-B8922 - LSBio

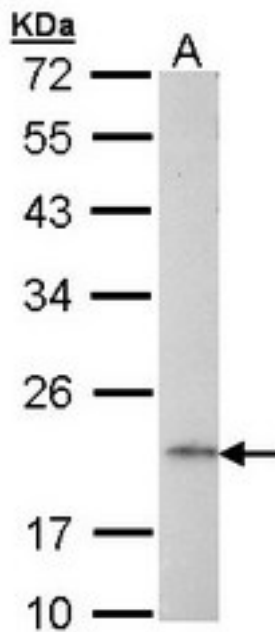
CatalogID:	LS-B8922
Validation:	This antibody replaces catalog number LS-C109426. It has been validated for use in the following assays: IHC-P.
Target:	adaptor-related protein complex 1, sigma 2 subunit (AP1S2)
Synonyms:	AP1S2 Antibody, DC22 Antibody, MRXS21 Antibody, MRX59 Antibody, Sigma1B-adaptin Antibody, MGC:1902 Antibody, MRXSF Antibody, AP-1 complex subunit sigma-2 Antibody, Sigma-adaptin 1B Antibody, SIGMA1B Antibody
Host	AP1S2 antibody was produced in Rabbit
Clonality:	Polyclonal
Immunogen Species:	AP1S2 antibody was raised against Human
Immunogen:	AP1S2 antibody was raised against recombinant protein fragment containing a sequence corresponding to a region within amino acids 1 and 122 of Human AP1S2.
Specificity:	Human AP1S2. Predicted cross-reactivity based on amino acid sequence homology: mouse (98%), bovine (87%), zebrafish (92%).
Reactivity:	Human
Purification:	Immunoaffinity purified
Presentation:	0.1 M Tris-glycine, pH 7, 10% Glycerol, 0.01% Thimerosal
Recommended Storage:	Aliquot and store at -20°C. Minimize freezing and thawing.
Uses:	IHC - Paraffin (10 µg/ml), Western blot (1:500 - 1:3000) (Optimal dilution to be determined by the researcher)
Size:	100 µl
Concentration:	0.51 mg/ml

Immunohistochemistry Image:



Human Heart: Formalin-Fixed, Paraffin-Embedded (FFPE)

Western Blot Image:



Sample (30 ug of whole cell lysate). A: Raji. 12% SDS PAGE. AP1S2 antibody diluted at 1:1000.

Requested From:

Japan

Laboratory Reagent For In Vitro Research Use Only

Not for resale without prior written consent from LifeSpan BioSciences, Inc.

Created on 9/24/2014

© 2014 LifeSpan BioSciences