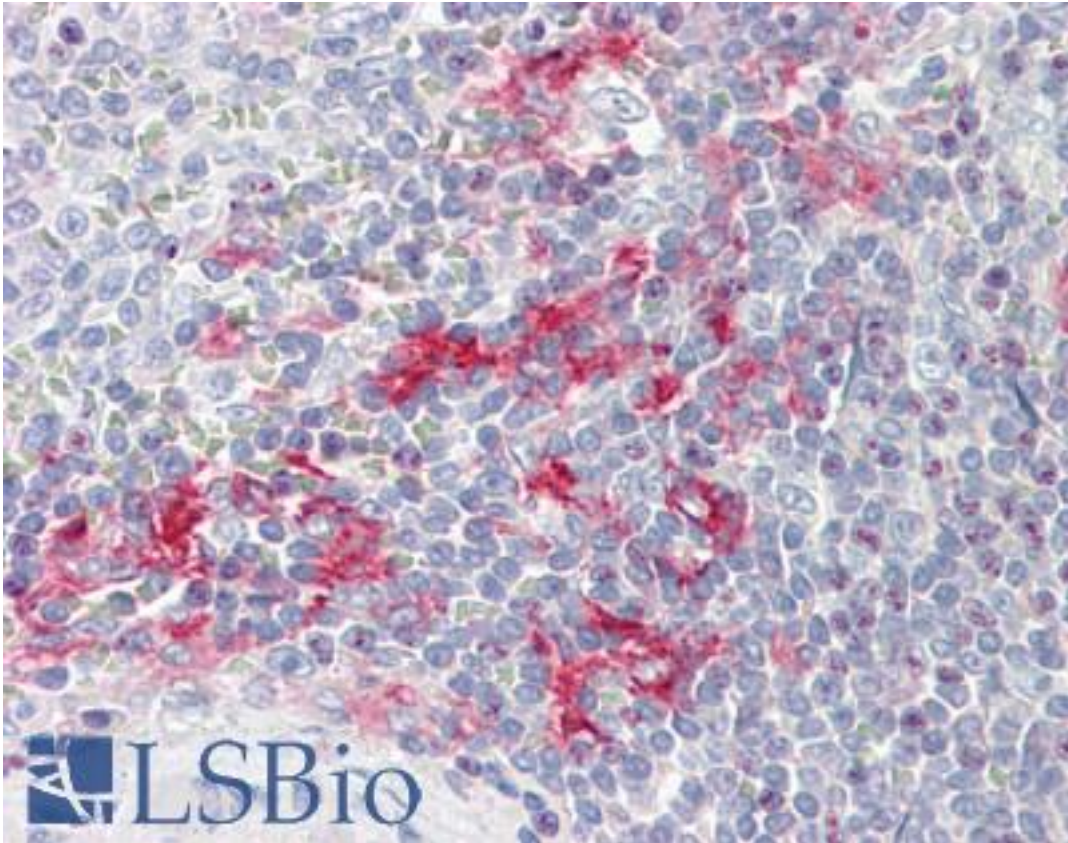


**LITAF Rabbit anti-Human Polyclonal Antibody - LS-B8921 - LSBio**

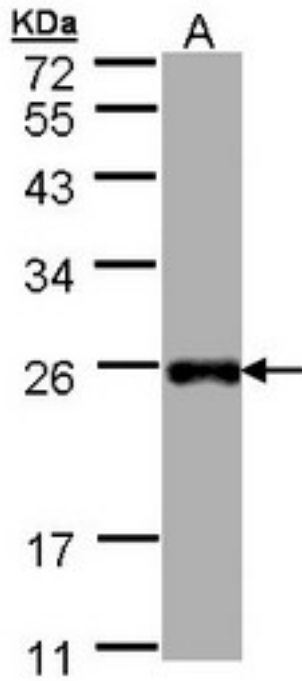
|                             |   |
|-----------------------------|---|
| <b>CatalogID:</b>           | LS-B8921  |
| <b>Validation:</b>          | This antibody replaces catalog number LS-C109424. It has been validated for use in the following assays: IHC-P.   |
| <b>Target:</b>              | lipopolysaccharide-induced TNF factor (LITAF)   |
| <b>Synonyms:</b>            | LITAF Antibody, PIG7 Antibody, TP53I7 Antibody, p53-induced gene 7 protein Antibody, SIMPLE Antibody, CMT1C Antibody, LPS-induced TNF-alpha factor Antibody |
| <b>Host</b>                 | LITAF antibody was produced in Rabbit   |
| <b>Clonality:</b>           | Polyclonal  |
| <b>Immunogen Species:</b>   | LITAF antibody was raised against Human   |
| <b>Immunogen:</b>           | LITAF antibody was raised against recombinant protein fragment containing a sequence corresponding to a region within amino acids 1 and 132 of Human LITAF. |
| <b>Specificity:</b>         | Human LITAF. Predicted cross-reactivity based on amino acid sequence homology: mouse (85%), rat (86%), bovine (86%).  |
| <b>Reactivity:</b>          | Human   |
| <b>Purification:</b>        | Immunoaffinity purified   |
| <b>Presentation:</b>        | 0.1 M Tris-glycine, pH 7, 10% Glycerol, 0.01% Thimerosal  |
| <b>Recommended Storage:</b> | Aliquot and store at -20°C. Minimize freezing and thawing.  |
| <b>Uses:</b>                | IHC - Paraffin (10 µg/ml), Western blot (1:500 - 1:3000) (Optimal dilution to be determined by the researcher)  |
| <b>Size:</b>                | 50 µl   |
| <b>Concentration:</b>       | 1 mg/ml   |

**Immunohistochemistry Image:**



Human Spleen: Formalin-Fixed, Paraffin-Embedded (FFPE)

**Western Blot Image:**



Sample (30 ug of whole cell lysate). A: Hep G2. 12% SDS PAGE. LITAF antibody diluted at 1:1000

**Requested From:**

Japan

Laboratory Reagent For In Vitro Research Use Only

Not for resale without prior written consent from LifeSpan BioSciences, Inc.

Created on 9/24/2014

© 2014 LifeSpan BioSciences