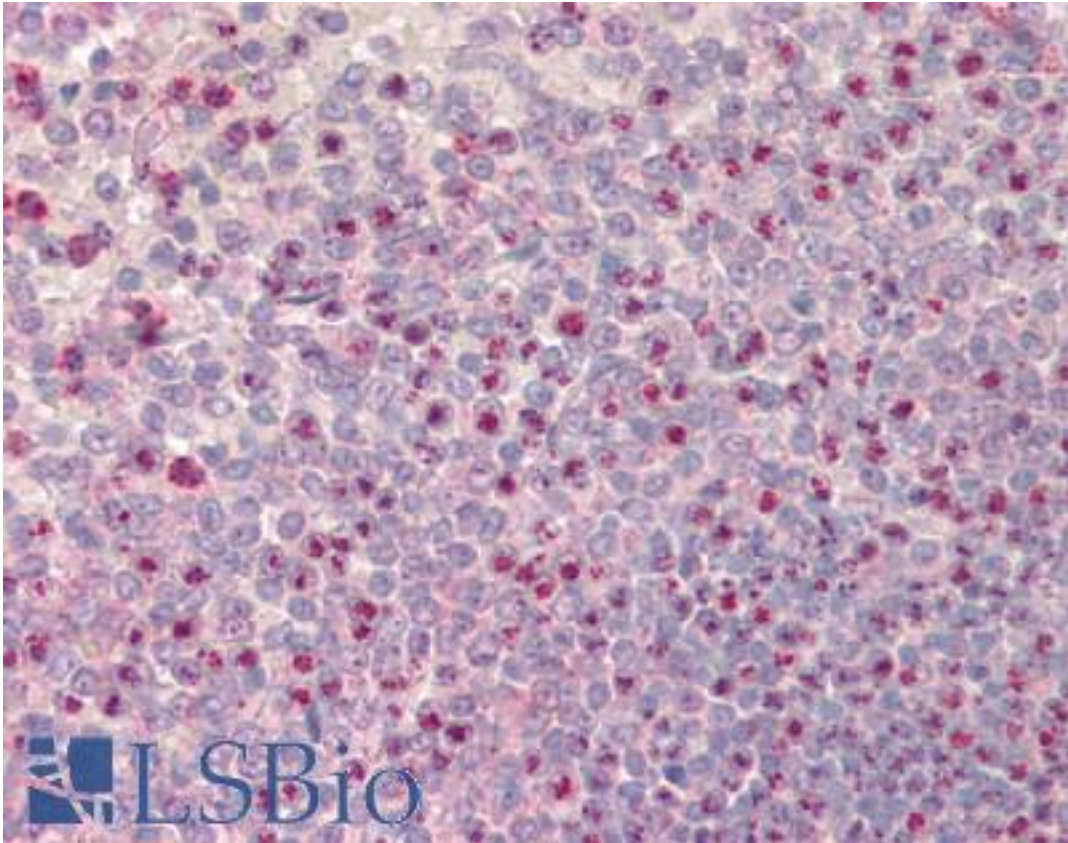


NOD1 Rabbit anti-Human Polyclonal Antibody - LS-B8920 - LSBio

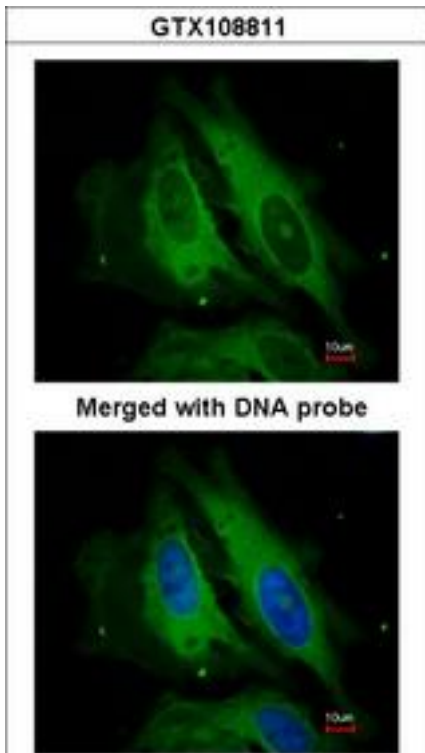
CatalogID:	LS-B8920
Validation:	This antibody replaces catalog number LS-C109420. It has been validated for use in the following assays: IHC-P.
Target:	nucleotide-binding oligomerization domain containing 1 (NOD1)
Synonyms:	NOD1 Antibody, CARD4 Antibody, CLR7.1 Antibody, NLRC1 Antibody
Host	NOD1 antibody was produced in Rabbit
Clonality:	Polyclonal
Immunogen Species:	NOD1 antibody was raised against Human
Immunogen:	NOD1 antibody was raised against recombinant protein fragment containing a sequence corresponding to a region within amino acids 698 and 928 of Human NOD1.
Specificity:	Human NOD1. Predicted cross-reactivity based on amino acid sequence homology: mouse (81%), rat (82%), pig (87%).
Reactivity:	Human
Purification:	Immunoaffinity purified
Presentation:	0.1 M Tris-glycine, pH 7, 10% Glycerol, 0.01% Thimerosal
Recommended Storage:	Aliquot and store at -20°C. Minimize freezing and thawing.
Uses:	IHC - Paraffin (10 µg/ml), ICC, Immunofluorescence (1:100 - 1:200), Western blot (1:500 - 1:3000) (Optimal dilution to be determined by the researcher)
Size:	50 µl
Concentration:	1 mg/ml

Immunohistochemistry Image:



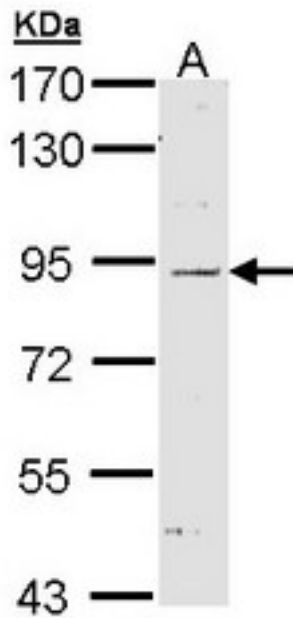
Human Spleen: Formalin-Fixed, Paraffin-Embedded (FFPE)

Immunofluorescence Image:



Immunofluorescence of paraformaldehyde-fixed HeLa, using NOD1 antibody at 1:200 dilution.

Western Blot Image:



Sample (30 ug of whole cell lysate). A: H1299. 7.5% SDS PAGE. NOD1 antibody diluted at 1:1000.

Requested From:

Japan

Laboratory Reagent For In Vitro Research Use Only

Not for resale without prior written consent from LifeSpan BioSciences, Inc.

Created on 9/24/2014

© 2014 LifeSpan BioSciences