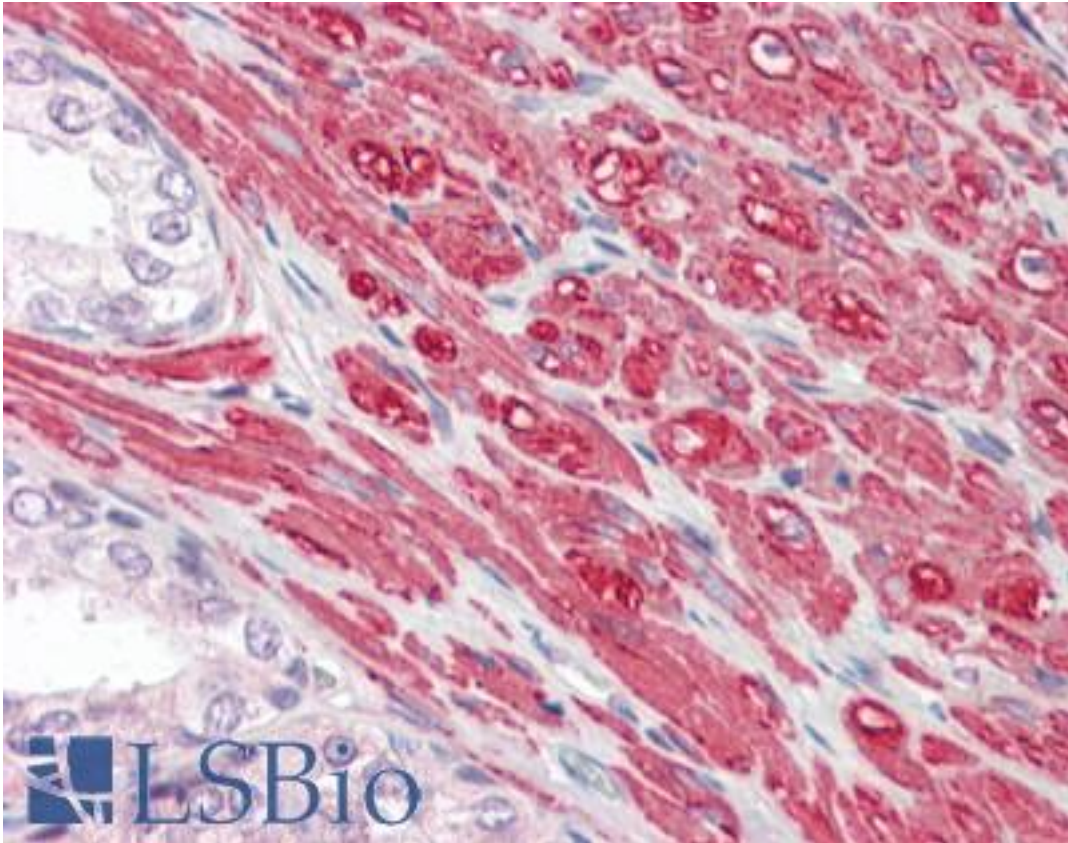


GREM2 / Gremlin 2 Rabbit anti-Human Polyclonal Antibody - LS-B8919 - LSBio	
CatalogID:	LS-B8919
Validation:	This antibody replaces catalog number LS-C155149. It has been validated for use in the following assays: IHC-P.
Target:	gremlin 2, DAN family BMP antagonist (GREM2)
Synonyms:	GREM2 Antibody, CKTSF1B2 Antibody, DAN domain family member 3 Antibody, DAND3 Antibody, Gremlin-2 Antibody, Gremlin 2 Antibody, PRDC Antibody
Host	GREM2 antibody was produced in Rabbit
Clonality:	Polyclonal
Isotype:	IgG
Immunogen Species:	GREM2 / Gremlin 2 antibody was raised against Human
Antigen Type:	Synthetic peptide
Immunogen:	GREM2 / Gremlin 2 antibody was raised against synthetic peptide corresponding to a region within amino acids 107 and 168 of GREM2 (SwissProt Q9H772). Percent identity by BLAST analysis: Human, Mouse, Rat (100%).
Specificity:	Human GREM2 / Gremlin 2
Reactivity:	Human, Mouse, Rat
Purification:	Immunoaffinity purified
Presentation:	0.1 M Tris-glycine, pH 7, 10% Glycerol, 0.01% Thimerosal
Recommended Storage:	Aliquot and freeze at -20° C. Avoid freeze-thaw cycles.
Usage Summary:	Antibody reactive against peptide, detects immunogen.
Uses:	IHC - Paraffin (10 µg/ml), ELISA (Optimal dilution to be determined by the researcher)
Size:	50 µl
Concentration:	0.97 mg/ml

Immunohistochemistry Image:



Human Prostate: Formalin-Fixed, Paraffin-Embedded (FFPE)

Requested From:

Japan

Laboratory Reagent For In Vitro Research Use Only

Not for resale without prior written consent from LifeSpan BioSciences, Inc.

Created on 9/24/2014

© 2014 LifeSpan BioSciences