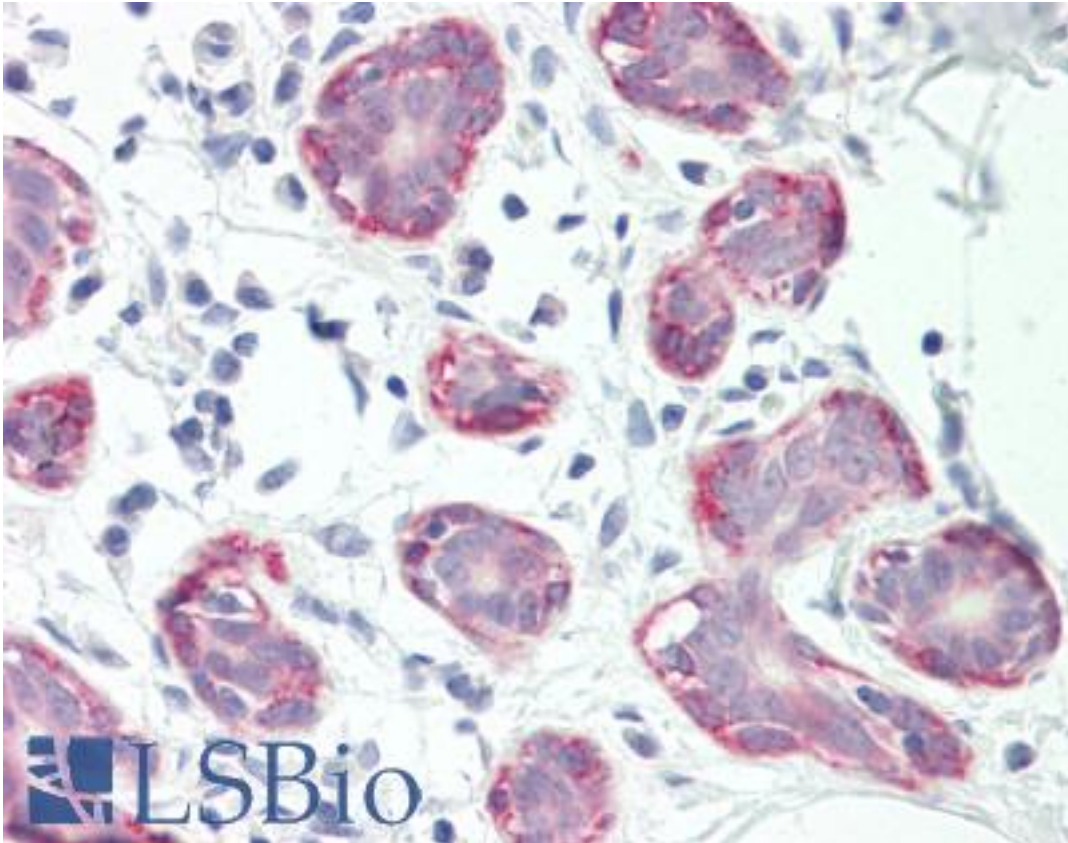


RXFP2 / LGR8 Rabbit anti-Human Polyclonal (C-Terminus) Antibody - LS-B8916 - LSBio

CatalogID:	LS-B8916
Validation:	This antibody replaces catalog number LS-C155077. It has been validated for use in the following assays: IHC-P.
Target:	relaxin/insulin-like family peptide receptor 2 (RXFP2)
Synonyms:	RXFP2 Antibody, G-protein coupled receptor 106 Antibody, GPR106 Antibody, INSL3R Antibody, LGR8 Antibody, GREAT Antibody, Relaxin receptor 2 Antibody, LGR8.1 Antibody, RXFPR2 Antibody
Family / Subfamily:	GPCR / Relaxin
Host	RXFP2 antibody was produced in Rabbit
Clonality:	Polyclonal
Isotype:	IgG
Immunogen Species:	RXFP2 / LGR8 antibody was raised against Human
Antigen Type:	Synthetic peptide
Immunogen:	RXFP2 / LGR8 antibody was raised against synthetic peptide corresponding to a region within amino acids 690 and 754 of Relaxin Receptor 2 (SwissProt Q8WXD0). Percent identity by BLAST analysis: Human, Monkey (100%).
Specificity:	Human RXFP2
Epitope:	C-Terminus
Reactivity:	Human, Monkey
Purification:	Immunoaffinity purified
Presentation:	0.1 M Tris-glycine, pH 7, 10% Glycerol, 0.01% Thimerosal
Recommended Storage:	Aliquot and freeze at -20° C. Avoid freeze-thaw cycles.
Usage Summary:	Antibody reactive against peptide, detects immunogen.
Uses:	IHC - Paraffin (10 µg/ml), ELISA (Optimal dilution to be determined by the researcher)
Size:	50 µl
Concentration:	1 mg/ml

Immunohistochemistry Image:



Human Breast: Formalin-Fixed, Paraffin-Embedded (FFPE)

Requested From:

Japan

Laboratory Reagent For In Vitro Research Use Only

Not for resale without prior written consent from LifeSpan BioSciences, Inc.

Created on 9/24/2014

© 2014 LifeSpan BioSciences