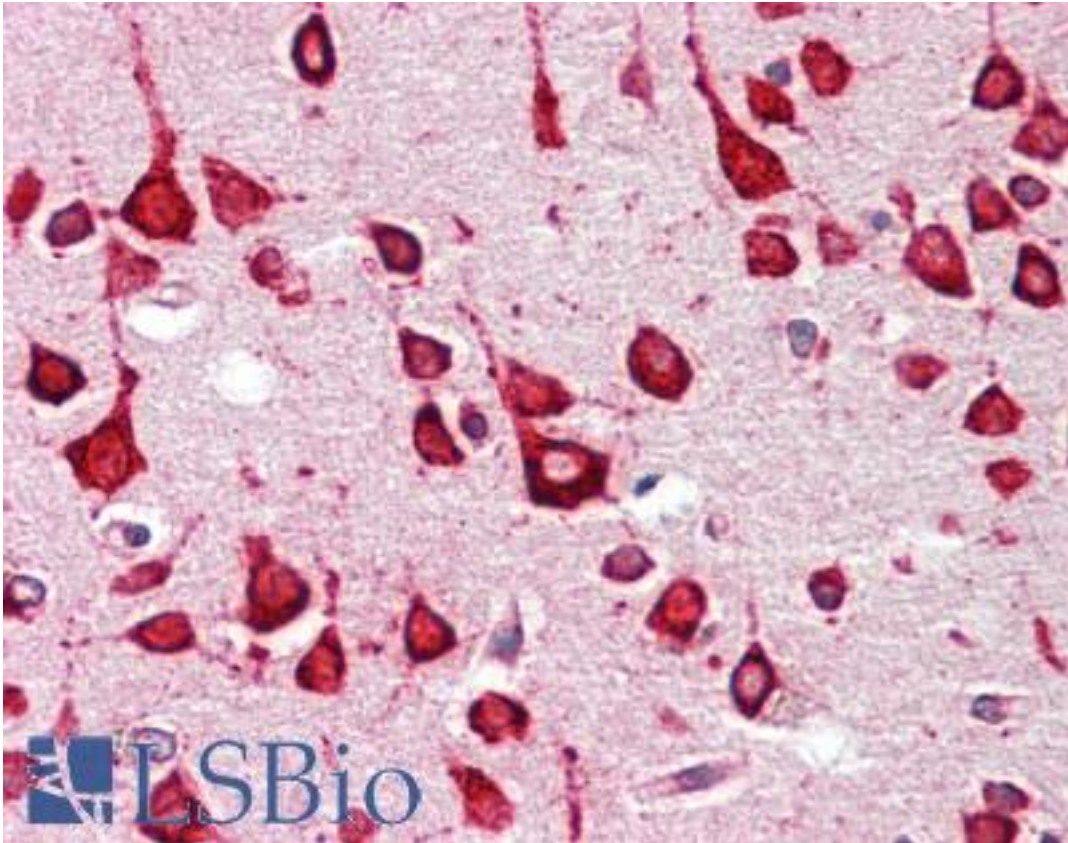


GALR1 / Galanin Receptor 1 Rabbit anti-Human Polyclonal (C-Terminus) Antibody - LS-B8915 - LSBio	
CatalogID:	LS-B8915
Validation:	This antibody replaces catalog number LS-C155084. It has been validated for use in the following assays: IHC-P.
Target:	galanin receptor 1 (GALR1)
Synonyms:	GALR1 Antibody, Galanin receptor type 1 Antibody, Galanin receptor 1 Antibody, Galanin receptor galr1 Antibody, Galanin-1 receptor Antibody, GALNR1 Antibody, Gal receptor 1 Antibody, Gal-r1 Antibody, Galn1r Antibody, Gal-1 receptor Antibody, GAL1-R Antibody, Galanin r1 receptor Antibody, GALNR Antibody, GALR-1 Antibody, Hugal 1-r Antibody
Family / Subfamily:	GPCR / Galanin
Host	GALR1 antibody was produced in Rabbit
Clonality:	Polyclonal
Isotype:	IgG
Immunogen Species:	GALR1 / Galanin Receptor 1 antibody was raised against Human
Antigen Type:	Synthetic peptide
Immunogen:	GALR1 / Galanin Receptor 1 antibody was raised against synthetic peptide corresponding to a region within amino acids 285 and 349 of galanin receptor 1 (SwissProt P47211). Percent identity by BLAST analysis: Human, Chicken (100%).
Specificity:	Human GALR1
Epitope:	C-Terminus
Reactivity:	Human, Chicken
Purification:	Immunoaffinity purified
Presentation:	0.1 M Tris-glycine, pH 7, 10% Glycerol, 0.01% Thimerosal
Recommended Storage:	Aliquot and freeze at -20° C. Avoid freeze-thaw cycles.
Usage Summary:	Antibody reactive against peptide, detects immunogen.
Uses:	IHC - Paraffin (10 µg/ml), ELISA (Optimal dilution to be determined by the researcher)
Size:	100 µl
Concentration:	0.3 mg/ml

Immunohistochemistry Image:



Human Brain, Cortex: Formalin-Fixed, Paraffin-Embedded (FFPE)

Requested From:

Japan

Laboratory Reagent For In Vitro Research Use Only

Not for resale without prior written consent from LifeSpan BioSciences, Inc.

Created on 9/24/2014

© 2014 LifeSpan BioSciences