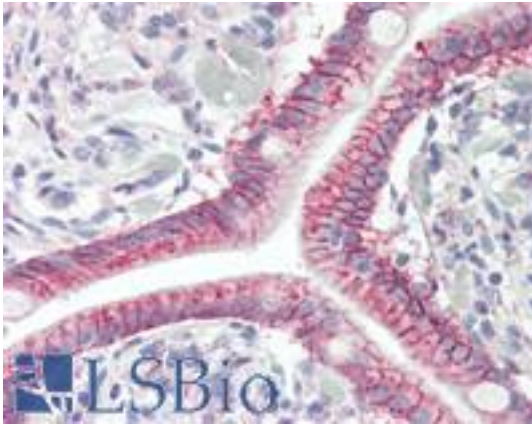


GPR52 Rabbit anti-Human Polyclonal Antibody - LS-B8914 - LSBio

<b>CatalogID:</b>	LS-B8914
<b>Validation:</b>	This antibody replaces catalog number LS-C155126. It has been validated for use in the following assays: IHC-P.
<b>Target:</b>	G protein-coupled receptor 52 (GPR52)
<b>Synonyms:</b>	GPR52 Antibody, Axor10 Antibody, G protein-coupled receptor 52 Antibody
<b>Family / Subfamily:</b>	GPCR / Orphan-A
<b>Host</b>	GPR52 antibody was produced in Rabbit
<b>Clonality:</b>	Polyclonal
<b>Isotype:</b>	IgG
<b>Immunogen Species:</b>	GPR52 antibody was raised against Human
<b>Antigen Type:</b>	Synthetic peptide
<b>Immunogen:</b>	GPR52 antibody was raised against synthetic peptide contain a sequence corresponding to a region within amino acids 1 and 30 (Q9Y2T5) of GPR52. Percent identity by BLAST analysis: Human, Mouse (100%).
<b>Specificity:</b>	Human GPR52
<b>Reactivity:</b>	Human, Mouse
<b>Purification:</b>	Immunoaffinity purified
<b>Presentation:</b>	0.1 M Tris-glycine, pH 7, 10% Glycerol, 0.01% Thimerosal
<b>Recommended Storage:</b>	Aliquot and freeze at -20° C. Avoid freeze-thaw cycles.
<b>Usage Summary:</b>	Antibody reactive against peptide, detects immunogen.
<b>Uses:</b>	IHC - Paraffin (10 µg/ml), ELISA (Optimal dilution to be determined by the researcher)
<b>Size:</b>	50 µl
<b>Concentration:</b>	1 mg/ml

**Immunohistochemistry Image:**



Human Small Intestine: Formalin-Fixed, Paraffin-Embedded (FFPE)

**Requested From:**

Japan

Laboratory Reagent For In Vitro Research Use Only

Not for resale without prior written consent from LifeSpan BioSciences, Inc.

Created on 9/24/2014

© 2014 LifeSpan BioSciences