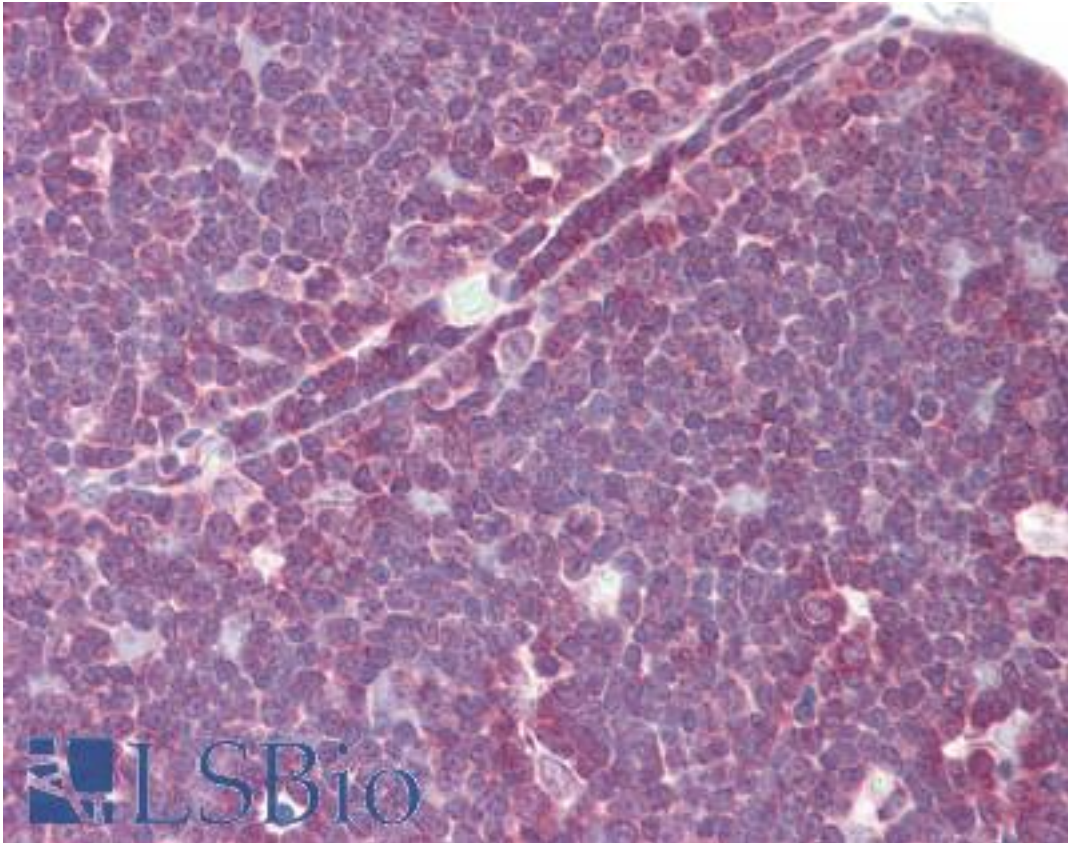


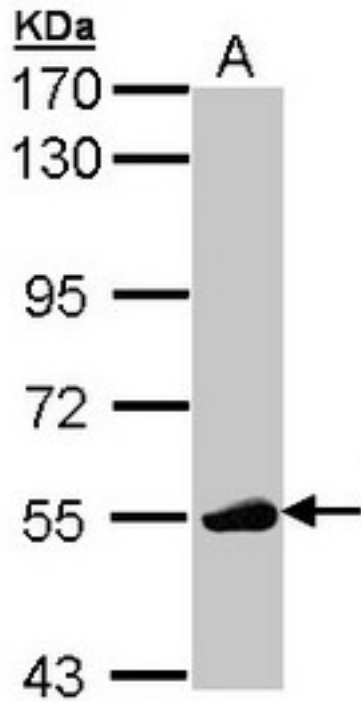
p56lck / LCK Rabbit anti-Human Polyclonal Antibody - LS-B8908 - LSBio	
CatalogID:	LS-B8908
Validation:	This antibody replaces catalog number LS-C109405. It has been validated for use in the following assays: IHC-P.
Target:	lymphocyte-specific protein tyrosine kinase (LCK)
Synonyms:	LCK Antibody, Lck kinase Antibody, LSK Antibody, p56-LCK Antibody, Pp58lck Antibody, Tyrosine-protein kinase Lck Antibody, p56lck Antibody, Protein YT16 Antibody, Proto-oncogene Lck Antibody, YT16 Antibody
Family / Subfamily:	Protein Kinase / Src
Host	LCK antibody was produced in Rabbit
Clonality:	Polyclonal
Immunogen Species:	p56lck / LCK antibody was raised against Human
Immunogen:	p56lck / LCK antibody was raised against recombinant protein fragment containing a sequence corresponding to a region within amino acids 1 and 268 of Human Lck.
Specificity:	Human LCK. Predicted cross-reactivity based on amino acid sequence homology: mouse (96%), rat (96%), bovine (95%), pig (95%).
Reactivity:	Human
Purification:	Immunoaffinity purified
Presentation:	0.1 M Tris-glycine, pH 7, 10% Glycerol, 0.01% Thimerosal
Recommended Storage:	Aliquot and store at -20°C. Minimize freezing and thawing.
Uses:	IHC - Paraffin (10 µg/ml), Western blot (1:500 - 1:3000) (Optimal dilution to be determined by the researcher)
Size:	50 µl
Concentration:	1 mg/ml

Immunohistochemistry Image:



Human Thymus: Formalin-Fixed, Paraffin-Embedded (FFPE)

Western Blot Image:



Sample (30 ug of whole cell lysate). A: Molt-4. 7.5% SDS PAGE. LCK antibody diluted at 1:1000.

Requested From:

Japan

Laboratory Reagent For In Vitro Research Use Only

Not for resale without prior written consent from LifeSpan BioSciences, Inc.

Created on 9/24/2014

© 2014 LifeSpan BioSciences