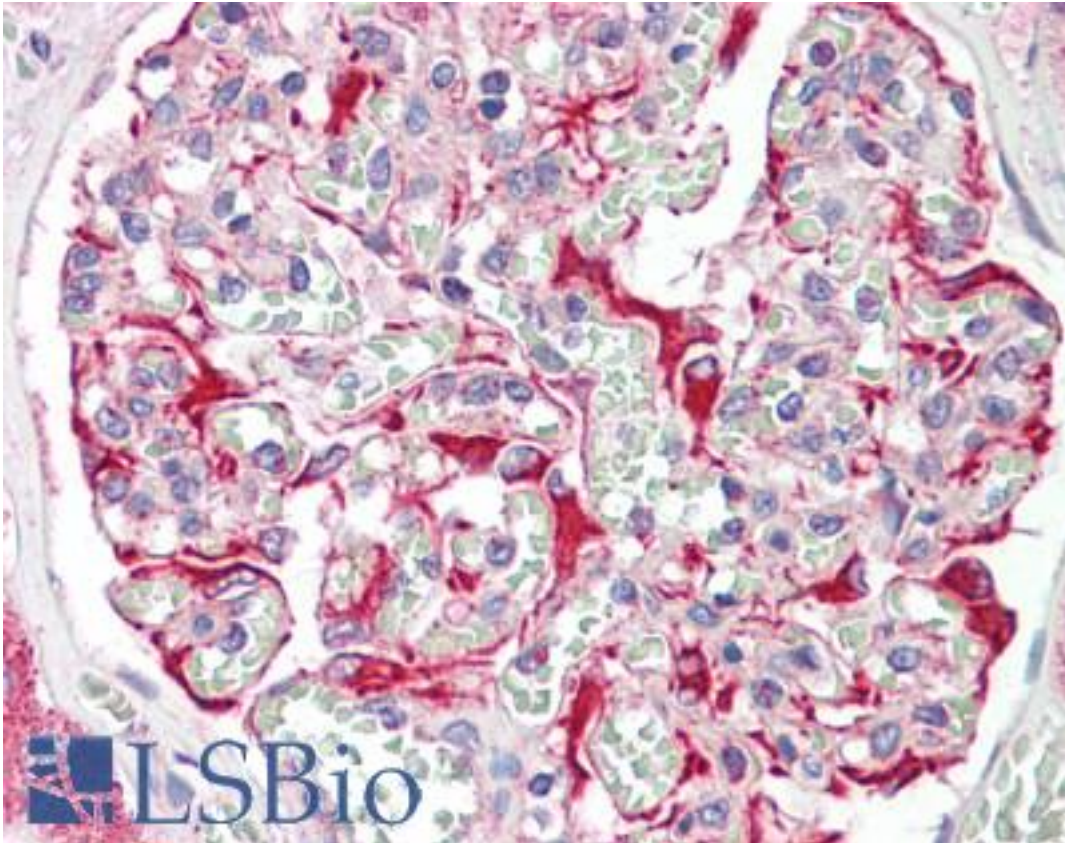


ZWINT Rabbit anti-Human Polyclonal Antibody - LS-B8907 - LSBio

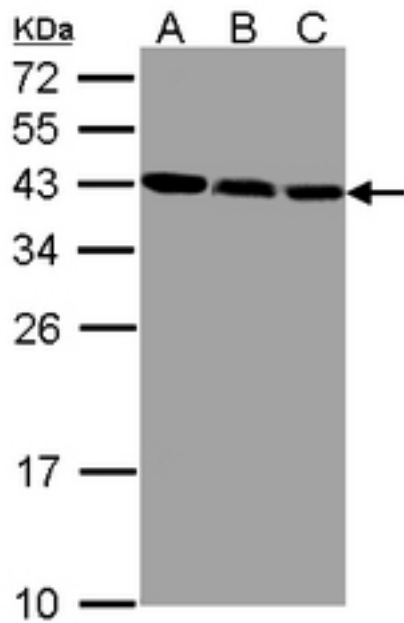
CatalogID:	LS-B8907
Validation:	This antibody replaces catalog number LS-C109403. It has been validated for use in the following assays: IHC-P.
Target:	ZW10 interacting kinetochore protein (ZWINT)
Synonyms:	ZWINT Antibody, HZwint-1 Antibody, KNTC2AP Antibody, Zwint-1 Antibody, ZW10 interactor Antibody, ZWINT1 Antibody, ZW10-interacting protein 1 Antibody
Host	ZWINT antibody was produced in Rabbit
Clonality:	Polyclonal
Immunogen Species:	ZWINT antibody was raised against Human
Immunogen:	ZWINT antibody was raised against recombinant protein fragment containing a sequence corresponding to a region within amino acids 1 and 254 of Human ZWINT.
Specificity:	Human ZWINT.
Reactivity:	Human
Purification:	Immunoaffinity purified
Presentation:	0.1 M Tris-glycine, pH 7, 10% Glycerol, 0.01% Thimerosal
Recommended Storage:	Aliquot and store at -20°C. Minimize freezing and thawing.
Uses:	IHC - Paraffin (10 µg/ml), Western blot (1:500 - 1:3000) (Optimal dilution to be determined by the researcher)
Size:	50 µl
Concentration:	1 mg/ml

Immunohistochemistry Image:



Human Kidney: Formalin-Fixed, Paraffin-Embedded (FFPE)

Western Blot Image:



Sample(30 ug whole cell lysate). A:293T. B: MOLT4. C: Raji. 12% SDS PAGE. ZWINT antibody diluted at 1:1000.

Requested From:	Japan
Laboratory Reagent For In Vitro Research Use Only	
Not for resale without prior written consent from LifeSpan BioSciences, Inc.	
Created on 9/24/2014	
© 2014 LifeSpan BioSciences	