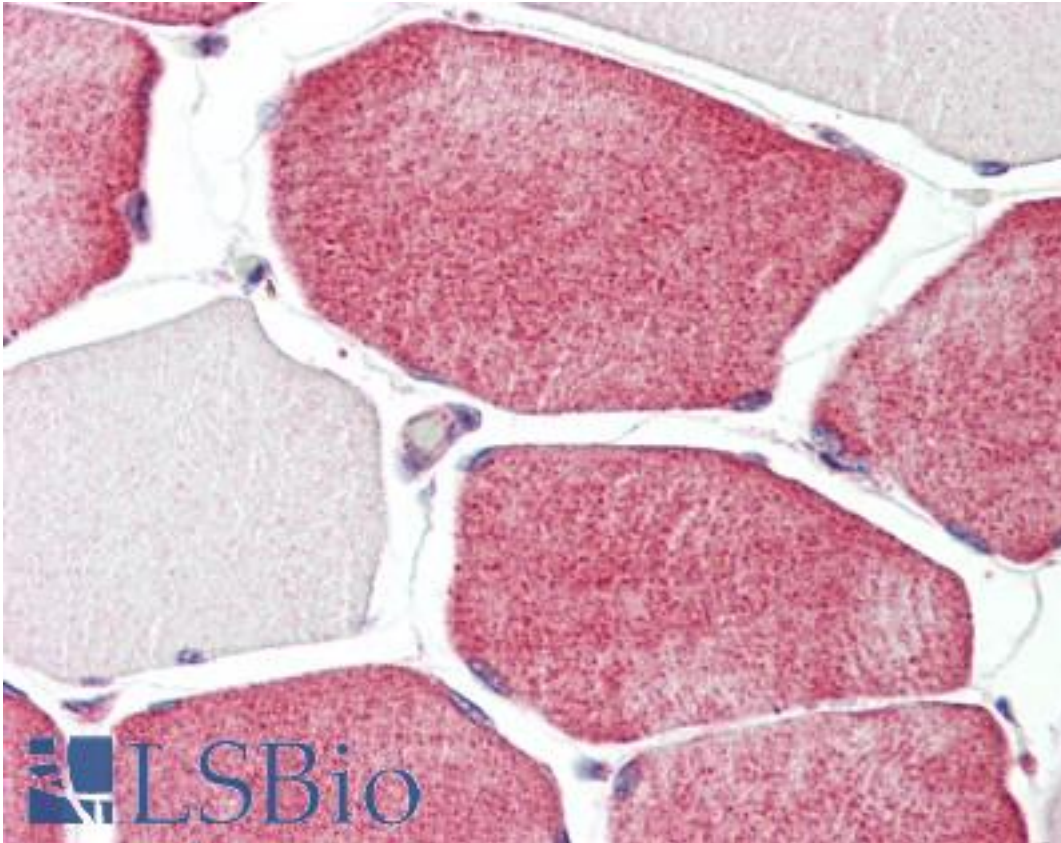


TAZ Rabbit anti-Human Polyclonal (C-Terminus) Antibody - LS-B8905 - LSBio

<b>CatalogID:</b>	LS-B8905
<b>Validation:</b>	This antibody replaces catalog number LS-C155141. It has been validated for use in the following assays: IHC-P.
<b>Target:</b>	tafazzin (TAZ)
<b>Synonyms:</b>	TAZ Antibody, BTHS Antibody, EFE Antibody, Endocardial fibroelastosis 2 Antibody, EFE2 Antibody, LVNCX Antibody, Protein G4.5 Antibody, Tafazzin Antibody, CMD3A Antibody, G4.5 Antibody, TAZ1 Antibody, XAP-2 Antibody
<b>Host</b>	TAZ antibody was produced in Rabbit
<b>Clonality:</b>	Polyclonal
<b>Isotype:</b>	IgG
<b>Immunogen Species:</b>	TAZ antibody was raised against Human
<b>Antigen Type:</b>	Synthetic peptide
<b>Immunogen:</b>	TAZ antibody was raised against synthetic peptide corresponding to a region within amino acids 226 and 292 of TAZ (SwissProt Q16635). Percent identity by BLAST analysis: Human (100%).
<b>Specificity:</b>	Human TAZ
<b>Epitope:</b>	C-Terminus
<b>Reactivity:</b>	Human
<b>Purification:</b>	Immunoaffinity purified
<b>Presentation:</b>	PBS, pH 7, 10% Glycerol, 0.01% Thimerosal
<b>Recommended Storage:</b>	Aliquot and freeze at -20° C. Avoid freeze-thaw cycles.
<b>Usage Summary:</b>	Antibody reactive against peptide, detects immunogen.
<b>Uses:</b>	IHC - Paraffin (10 µg/ml), ELISA (Optimal dilution to be determined by the researcher)
<b>Size:</b>	50 µl
<b>Concentration:</b>	1 mg/ml

**Immunohistochemistry Image:**



Human Skeletal Muscle: Formalin-Fixed, Paraffin-Embedded (FFPE)

**Requested From:**

Japan

Laboratory Reagent For In Vitro Research Use Only

Not for resale without prior written consent from LifeSpan BioSciences, Inc.

Created on 9/24/2014

© 2014 LifeSpan BioSciences