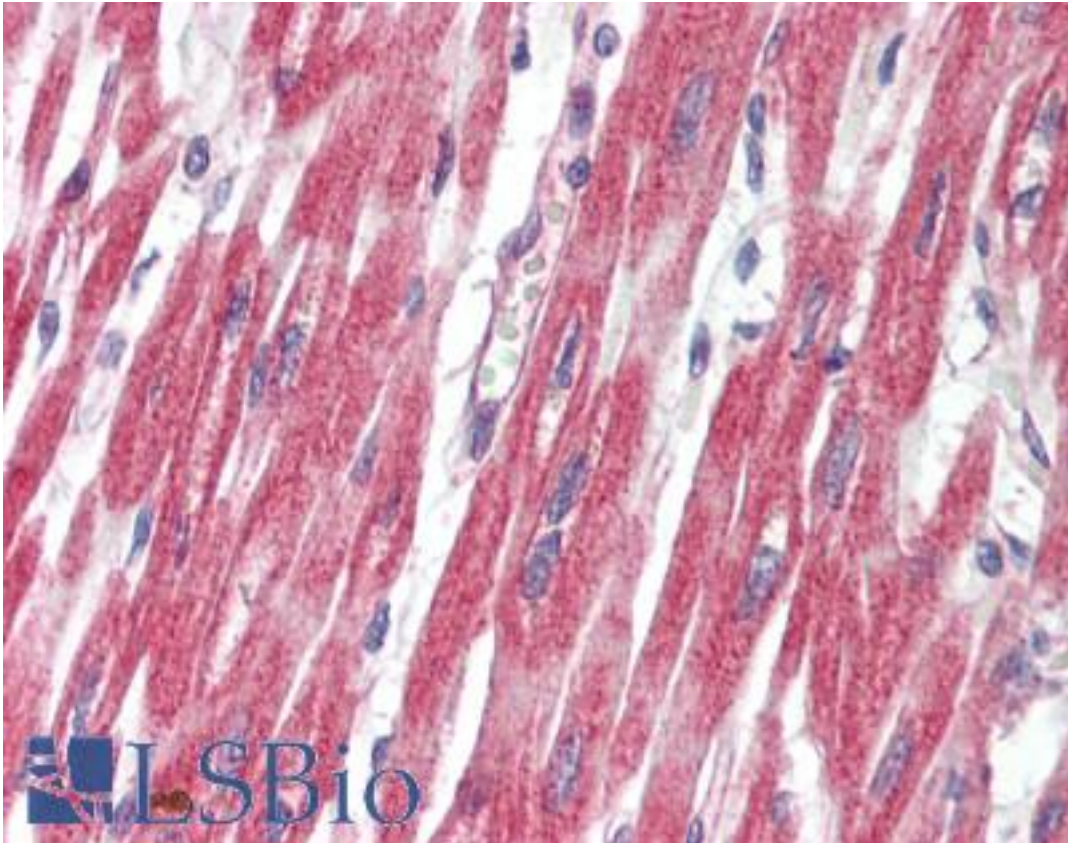


PLCL1 Rabbit anti-Human Polyclonal Antibody - LS-B8903 - LSBio	
<b>CatalogID:</b>	LS-B8903
<b>Validation:</b>	This antibody replaces catalog number LS-C155168. It has been validated for use in the following assays: IHC-P.
<b>Target:</b>	phospholipase C-like 1 (PLCL1)
<b>Synonyms:</b>	PLCL1 Antibody, Phospholipase C, epsilon Antibody, PRIP Antibody, Phospholipase c Antibody, PLDL1 Antibody, Phospholipase C-like 1 Antibody, PLC-L Antibody, PLC-L1 Antibody, PLCE Antibody, PLCL Antibody
<b>Family / Subfamily:</b>	Phospholipase / not assigned-Phospholipase
<b>Host</b>	PLCL1 antibody was produced in Rabbit
<b>Clonality:</b>	Polyclonal
<b>Isotype:</b>	IgG
<b>Immunogen Species:</b>	PLCL1 antibody was raised against Human
<b>Antigen Type:</b>	Recombinant protein
<b>Immunogen:</b>	PLCL1 antibody was raised against recombinant protein fragment contain a sequence corresponding to a region within amino acids 34 and 299 (Q15111) of PLCL1. Percent identity by BLAST analysis: Human (100%); Rat (99%); Mouse, Bovine (98%).
<b>Specificity:</b>	Human PLCL1
<b>Reactivity:</b>	Human
<b>Predicted Reactivity:</b>	Mouse, Rat, Bovine
<b>Purification:</b>	Immunoaffinity purified
<b>Presentation:</b>	0.1 M Tris-glycine, pH 7, 10% Glycerol, 0.01% Thimerosal
<b>Recommended Storage:</b>	Aliquot and freeze at -20° C. Avoid freeze-thaw cycles.
<b>Usage Summary:</b>	Antibody reactive against recombinant protein, detects immunogen.
<b>Uses:</b>	IHC - Paraffin (10 µg/ml), Western blot (Optimal dilution to be determined by the researcher)
<b>Size:</b>	100 µl
<b>Concentration:</b>	0.92 mg/ml

**Immunohistochemistry Image:**



Human Heart: Formalin-Fixed, Paraffin-Embedded (FFPE)

**Requested From:**

Japan

Laboratory Reagent For In Vitro Research Use Only

Not for resale without prior written consent from LifeSpan BioSciences, Inc.

Created on 9/24/2014

© 2014 LifeSpan BioSciences