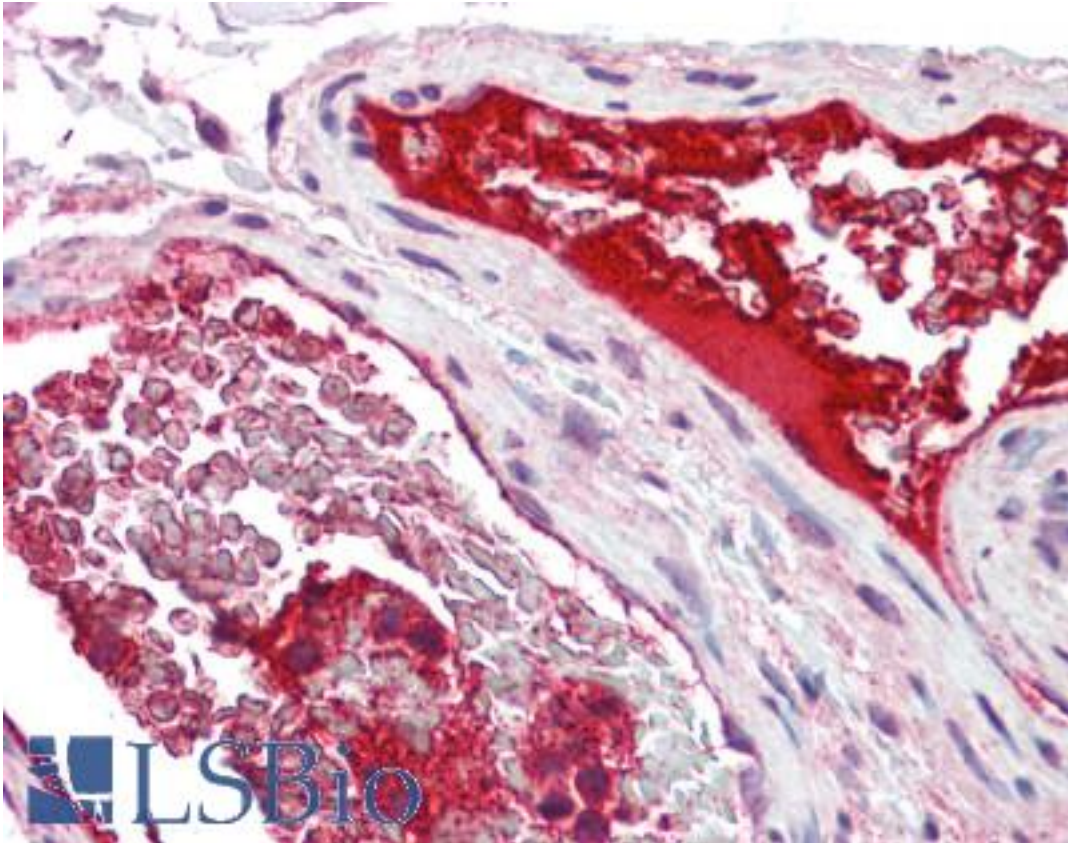


CLEC7A / Dectin 1 Rabbit anti-Human Polyclonal Antibody - LS-B8902 - LSBio	
CatalogID:	LS-B8902
Validation:	This antibody replaces catalog number LS-C155119. It has been validated for use in the following assays: IHC-P.
Target:	C-type lectin domain family 7, member A (CLEC7A)
Synonyms:	CLEC7A Antibody, BGR Antibody, CANDF4 Antibody, CLECSF12 Antibody, Dectin-1 Antibody, DC-associated C-type lectin 1 Antibody, DECTIN1 Antibody, HDectin-1 Antibody, Beta-glucan receptor Antibody, Lectin-like receptor 1 Antibody
Host	CLEC7A antibody was produced in Rabbit
Clonality:	Polyclonal
Isotype:	IgG
Immunogen Species:	CLEC7A / Dectin 1 antibody was raised against Human
Antigen Type:	Synthetic peptide
Immunogen:	CLEC7A / Dectin 1 antibody was raised against synthetic peptide corresponding to a region within amino acids 36 and 127 of Dectin-1 (SwissProt Q9BXN2). Percent identity by BLAST analysis: Human, Monkey (100%).
Specificity:	Human CLEC7A / Dectin 1
Reactivity:	Human, Monkey
Purification:	Immunoaffinity purified
Presentation:	PBS, pH 7, 10% Glycerol, 0.01% Thimerosal
Recommended Storage:	Aliquot and freeze at -20° C. Avoid freeze-thaw cycles.
Usage Summary:	Antibody reactive against peptide, detects immunogen.
Uses:	IHC - Paraffin (10 µg/ml), ELISA (Optimal dilution to be determined by the researcher)
Size:	100 µl

Immunohistochemistry Image:



Human Colon, Vessels: Formalin-Fixed, Paraffin-Embedded (FFPE)

Requested From:

Japan

Laboratory Reagent For In Vitro Research Use Only

Not for resale without prior written consent from LifeSpan BioSciences, Inc.

Created on 9/24/2014

© 2014 LifeSpan BioSciences