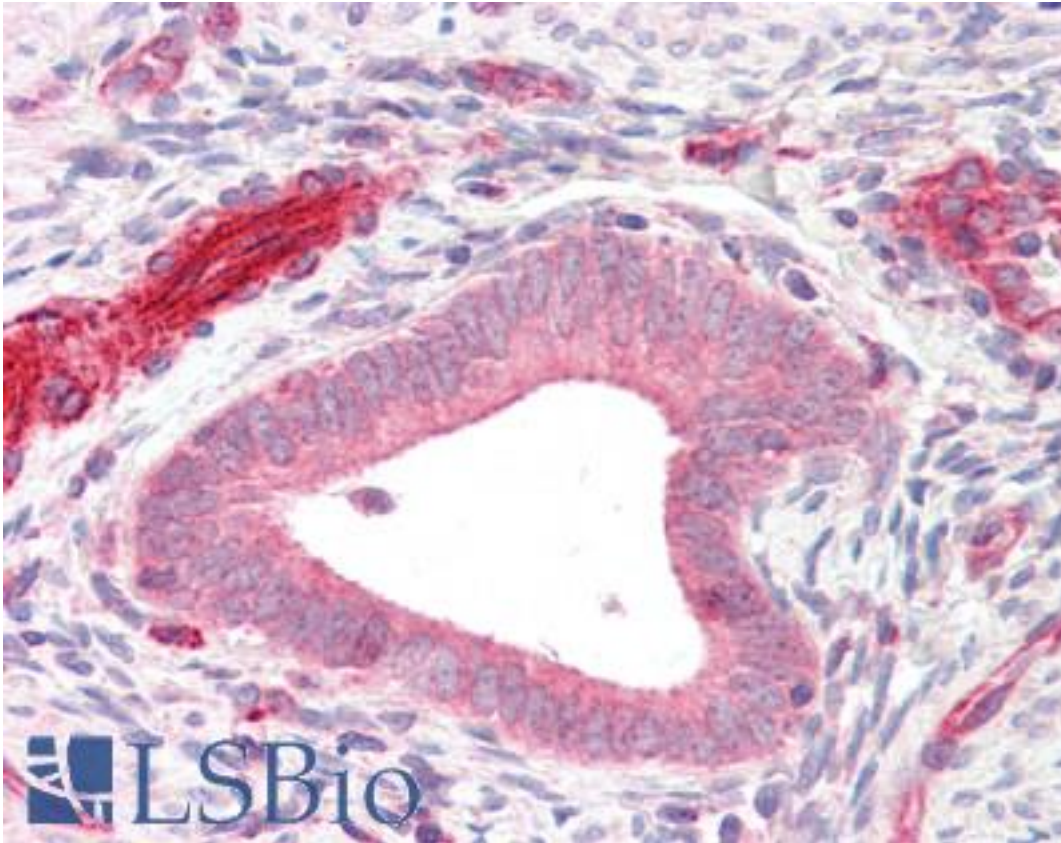


ADAM33 Rabbit anti-Human Polyclonal Antibody - LS-B8901 - LSBio

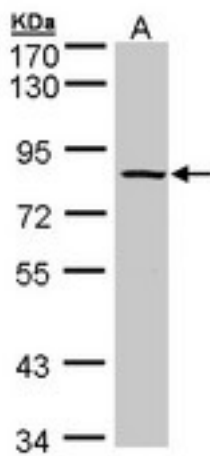
CatalogID:	LS-B8901
Validation:	This antibody replaces catalog number LS-C109383. It has been validated for use in the following assays: IHC-P.
Target:	ADAM metallopeptidase domain 33 (ADAM33)
Synonyms:	ADAM33 Antibody, C20orf153 Antibody, DJ964F7.1 Antibody, ADAM 33 Antibody
Family / Subfamily:	Protease / Metallopeptidase M12B
Host	ADAM33 antibody was produced in Rabbit
Clonality:	Polyclonal
Immunogen Species:	ADAM33 antibody was raised against Human
Antigen Type:	Synthetic peptide
Immunogen:	ADAM33 antibody was raised against synthetic peptide containing a sequence corresponding to a region within amino acids 587 and 650 of Human ADAM33.
Specificity:	Human ADAM33.
Reactivity:	Human
Purification:	Immunoaffinity purified
Presentation:	PBS, pH 7, 10% Glycerol, 0.01% Thimerosal
Recommended Storage:	Aliquot and store at -20°C. Minimize freezing and thawing.
Uses:	IHC - Paraffin (10 µg/ml), Western blot (1:500 - 1:3000) (Optimal dilution to be determined by the researcher)
Size:	100 µl
Concentration:	0.71 mg/ml

Immunohistochemistry Image:



Human Uterus: Formalin-Fixed, Paraffin-Embedded (FFPE)

Western Blot Image:



Sample (30 ug of whole cell lysate). A: Raji. 7.5% SDS PAGE. ADAM33 antibody diluted at 1:500

Requested From:

Japan

Laboratory Reagent For In Vitro Research Use Only

Not for resale without prior written consent from LifeSpan BioSciences, Inc.

Created on 9/24/2014

© 2014 LifeSpan BioSciences