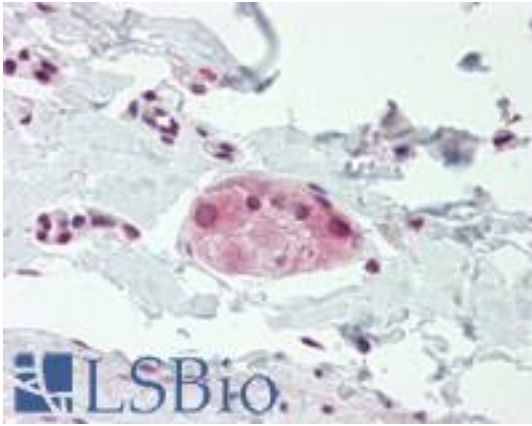


ARHU / RHOU Rabbit anti-Human Polyclonal Antibody - LS-B8900 - LSBio

CatalogID:	LS-B8900
Validation:	This antibody replaces catalog number LS-C155118. It has been validated for use in the following assays: IHC-P.
Target:	ras homolog family member U (RHOU)
Synonyms:	RHOU Antibody, ARHU Antibody, CDC42-like GTPase 1 Antibody, CDC42L1 Antibody, DJ646B12.2 Antibody, FJ646B12.2 Antibody, G28K Antibody, GTP-binding protein-like 1 Antibody, GTP-binding protein SB128 Antibody, HG28K Antibody, GTP-binding protein like 1 Antibody, Ras homolog family member U Antibody, Rho GTPase-like protein ARHU Antibody, Ryu GTPase Antibody, Ras-like gene family member U Antibody, Wnt-1 responsive Cdc42 homolog Antibody, WRCH-1 Antibody, WRCH1 Antibody
Family / Subfamily:	Ras GTPase superfamily IPR001806 / not assigned-Ras GTPase superfamily IPR001806
Host	RHOU antibody was produced in Rabbit
Clonality:	Polyclonal
Isotype:	IgG
Immunogen Species:	ARHU / RHOU antibody was raised against Human
Antigen Type:	Synthetic peptide
Immunogen:	ARHU / RHOU antibody was raised against synthetic peptide contain a sequence corresponding to a region within amino acids 1 and 11 (Q7L0Q8) of WRCH1. Percent identity by BLAST analysis: Human (100%).
Specificity:	Human RHOU
Reactivity:	Human
Purification:	Immunoaffinity purified
Presentation:	PBS, pH 7, 10% Glycerol, 0.01% Thimerosal
Recommended Storage:	Aliquot and freeze at -20° C. Avoid freeze-thaw cycles.
Usage Summary:	Antibody reactive against peptide, detects immunogen.
Uses:	IHC - Paraffin (10 µg/ml), ELISA (Optimal dilution to be determined by the researcher)
Size:	50 µl
Concentration:	1 mg/ml

Immunohistochemistry Image:



Human Colon, Submucosal Plexus: Formalin-Fixed, Paraffin-Embedded (FFPE)

Requested From:

Japan

Laboratory Reagent For In Vitro Research Use Only

Not for resale without prior written consent from LifeSpan BioSciences, Inc.

Created on 9/24/2014

© 2014 LifeSpan BioSciences