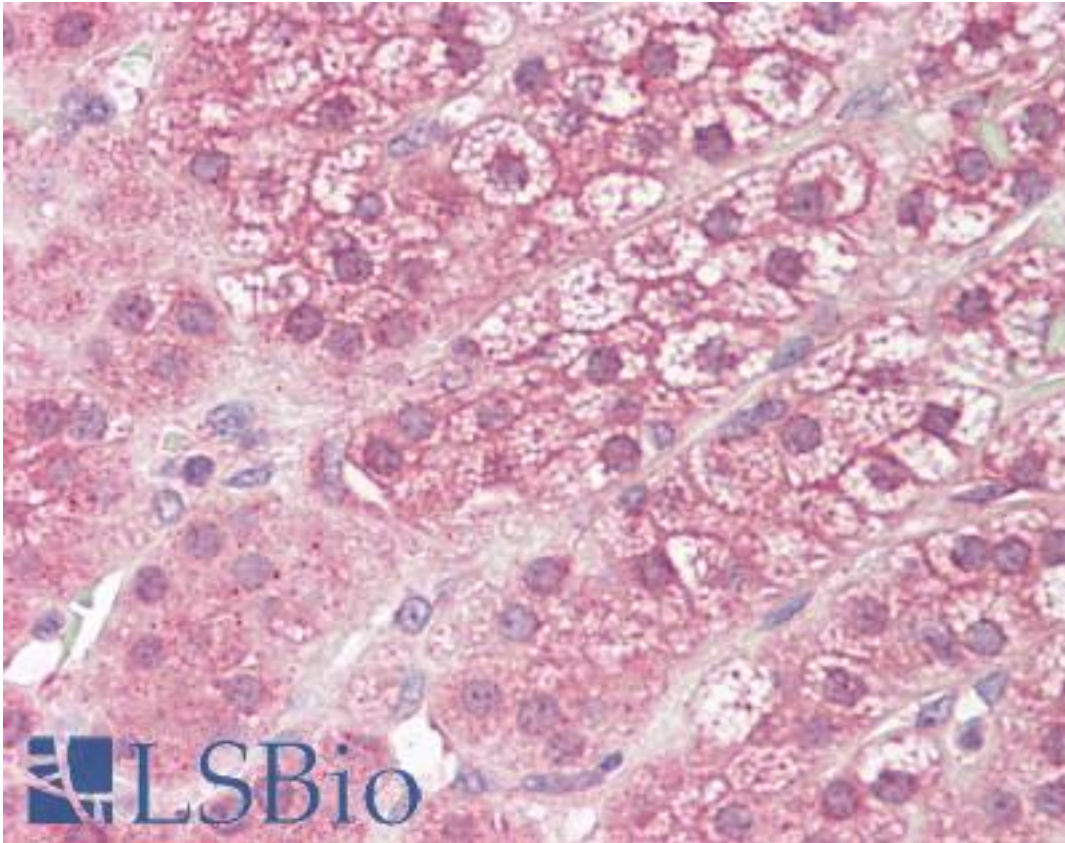


DIAPH3 / MDIA2 Rabbit anti-Human Polyclonal Antibody - LS-B8892 - LSBio	
CatalogID:	LS-B8892
Validation:	This antibody replaces catalog number LS-C155158. It has been validated for use in the following assays: IHC-P.
Target:	diaphanous-related formin 3 (DIAPH3)
Synonyms:	DIAPH3 Antibody, AUNA1 Antibody, DRF3 Antibody, Diap3 Antibody, Diaphanous-related formin-3 Antibody, DIA2 Antibody, MDia2 Antibody, NSDAN Antibody, Protein diaphanous homolog 3 Antibody
Host	DIAPH3 antibody was produced in Rabbit
Clonality:	Polyclonal
Isotype:	IgG
Immunogen Species:	DIAPH3 / MDIA2 antibody was raised against Human
Antigen Type:	Recombinant protein
Immunogen:	DIAPH3 / MDIA2 antibody was raised against recombinant fragment corresponding to a region within amino acids 739 and 1127 of DIAPH3 (SwissProt Q9NSV4). Percent identity by BLAST analysis: Human (100%); Bovine (90%).
Specificity:	Human DIAPH3
Reactivity:	Human
Predicted Reactivity:	Bovine
Purification:	Immunoaffinity purified
Presentation:	0.1 M Tris-glycine, pH 7, 10% Glycerol, 0.01% Thimerosal
Recommended Storage:	Aliquot and freeze at -20° C. Avoid freeze-thaw cycles.
Usage Summary:	Antibody reactive against recombinant protein, detects immunogen.
Uses:	IHC - Paraffin (10 µg/ml), Western blot (Optimal dilution to be determined by the researcher)
Size:	50 µl
Concentration:	1 mg/ml

Immunohistochemistry Image:



Human Adrenal: Formalin-Fixed, Paraffin-Embedded (FFPE)

Requested From:

Japan

Laboratory Reagent For In Vitro Research Use Only

Not for resale without prior written consent from LifeSpan BioSciences, Inc.

Created on 9/24/2014

© 2014 LifeSpan BioSciences