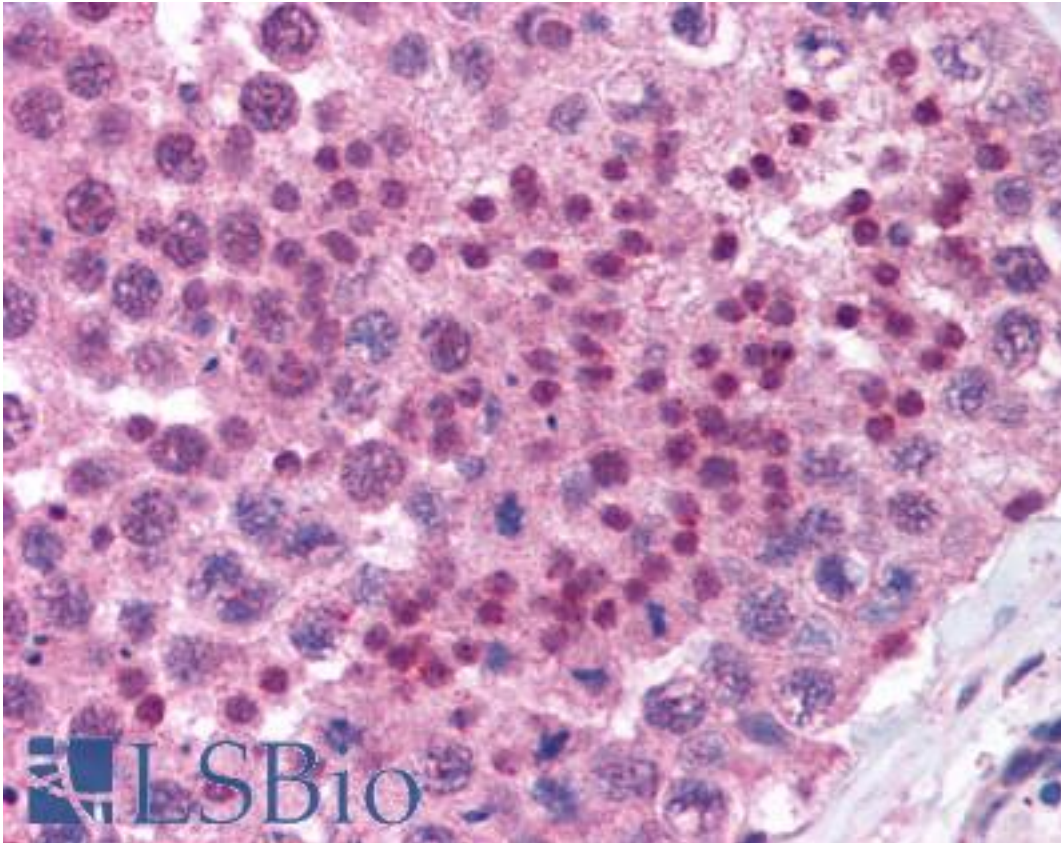


MAGEB1 Rabbit anti-Human Polyclonal (aa139-154) Antibody - LS-B888 - LSBio	
<b>CatalogID:</b>	LS-B888
<b>Validation:</b>	This antibody replaces catalog number LS-C3338. It has been validated for use in the following assays: IHC.
<b>Target:</b>	melanoma antigen family B, 1 (MAGEB1)
<b>Synonyms:</b>	MAGEB1 Antibody, Cancer/testis antigen 3.1 Antibody, DAM10 Antibody, CT3.1 Antibody, MAGE-Xp Antibody, MAGEXP Antibody, Melanoma-associated antigen B1 Antibody, MAGE-B1 antigen Antibody, MAGEL1 Antibody, Melanoma antigen family B, 1 Antibody, MAGE-XP antigen Antibody
<b>Host</b>	MAGEB1 antibody was produced in Rabbit
<b>Clonality:</b>	Polyclonal
<b>Immunogen Species:</b>	MAGEB1 antibody was raised against Human
<b>Antigen Type:</b>	Synthetic peptide
<b>Immunogen:</b>	MAGEB1 antibody was raised against synthetic peptide from human MAGEB1.
<b>Specificity:</b>	Amino acids 139 to 154 of human MAGEB1
<b>Epitope:</b>	aa139-154
<b>Reactivity:</b>	Human
<b>Purification:</b>	Protein G purified
<b>Presentation:</b>	PBS, 0.1% sodium azide.
<b>Recommended Storage:</b>	Long term: -20°C; Short term: +4°C. Avoid repeat freeze-thaw cycles.
<b>Usage Summary:</b>	Immunohistochemistry: LS-B888 was validated for use in immunohistochemistry on a panel of 21 formalin-fixed, paraffin-embedded (FFPE) human tissues after heat induced antigen retrieval in pH 6.0 citrate buffer. After incubation with the primary antibody, slides were incubated with biotinylated secondary antibody, followed by alkaline phosphatase-streptavidin and chromogen. The stained slides were evaluated by a pathologist to confirm staining specificity. The optimal working concentration for LS-B888 was determined to be 2.5 ug/ml.
<b>Uses:</b>	IHC - Paraffin (2.5 µg/ml), ELISA (1:000 - 1:1000) (Optimal dilution to be determined by the researcher)
<b>Size:</b>	50 µg
<b>Concentration:</b>	1 mg/ml

**Immunohistochemistry Image:**



Anti-MAGEB1 antibody IHC of human testis. Immunohistochemistry of formalin-fixed, paraffin-embedded tissue after heat-induced antigen retrieval. Antibody LS-B888 concentration 5 ug/ml.

**Requested From:**

Japan

Laboratory Reagent For In Vitro Research Use Only

Not for resale without prior written consent from LifeSpan BioSciences, Inc.

Created on 9/24/2014

© 2014 LifeSpan BioSciences