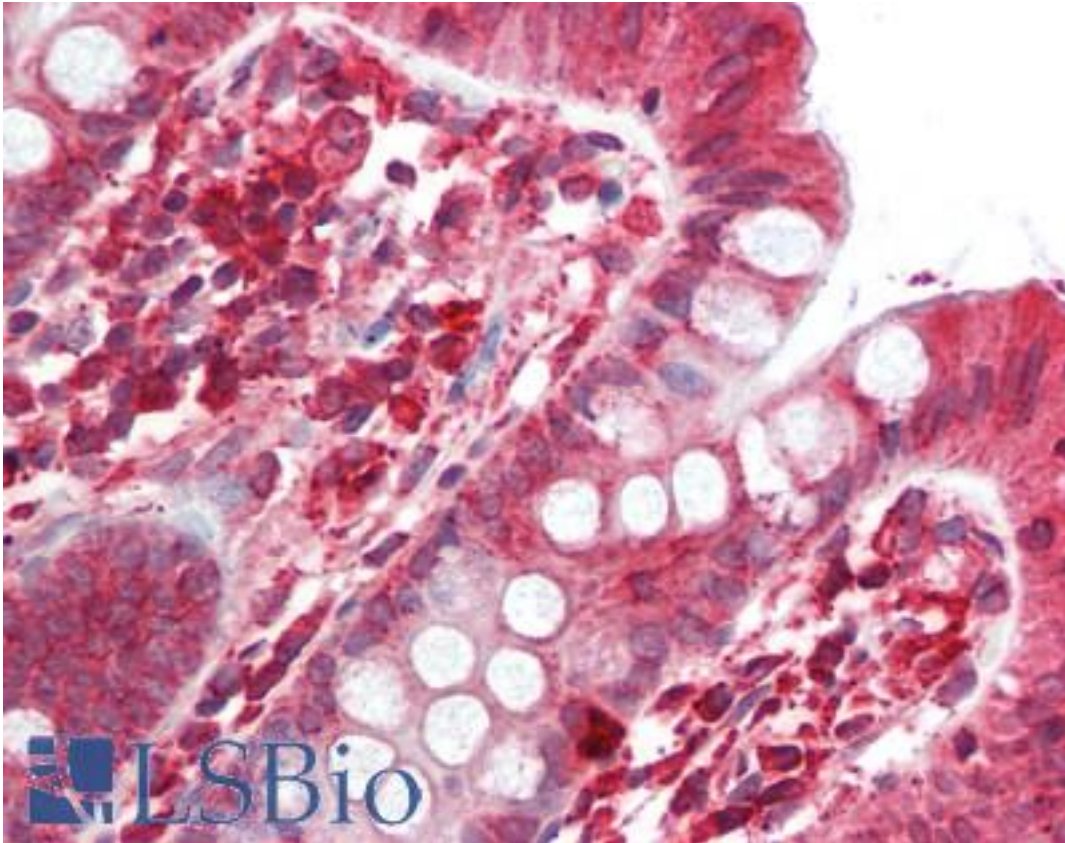


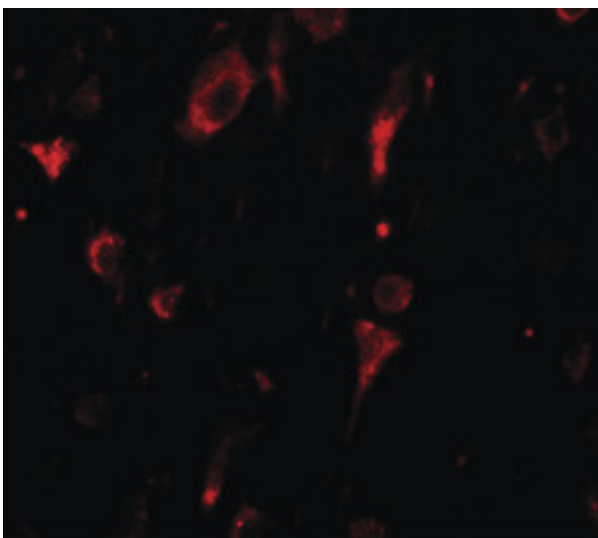
SGSM2 Rabbit anti-Human Polyclonal (Internal) Antibody - LS-B8867 - LSBio	
<b>CatalogID:</b>	LS-B8867
<b>Validation:</b>	This antibody replaces catalog number LS-C153653. It has been validated for use in the following assays: IHC-P.
<b>Target:</b>	Small G Protein Signaling Modulator 2 (SGSM2)
<b>Synonyms:</b>	SGSM2 Antibody, KIAA0397 Antibody, RUTBC1 Antibody
<b>Host</b>	SGSM2 antibody was produced in Rabbit
<b>Clonality:</b>	Polyclonal
<b>Immunogen Species:</b>	SGSM2 antibody was raised against Human
<b>Antigen Type:</b>	Synthetic peptide
<b>Immunogen:</b>	SGSM2 antibody was raised against an 18 amino acid peptide near the center of human SGSM2.
<b>Specificity:</b>	Human SGSM2. Multiple isoforms of SGSM2 are known to exist. SGSM2 antibody is predicted to not cross react with other SGSM family proteins.
<b>Epitope:</b>	Internal
<b>Reactivity:</b>	Human
<b>Purification:</b>	Immunoaffinity purified
<b>Presentation:</b>	PBS, 0.02% sodium azide
<b>Recommended Storage:</b>	Long term: -20°C; Short term: +4°C. Avoid repeat freeze-thaw cycles.
<b>Usage Summary:</b>	SGSM2 antibody can be used for detection of SGSM2 by Western blot at 1-2 ug/mL.
<b>Uses:</b>	IHC - Paraffin (5 µg/ml), Western blot (1 - 2 µg/ml) (Optimal dilution to be determined by the researcher)
<b>Size:</b>	50 µg
<b>Concentration:</b>	1 mg/ml

**Immunohistochemistry Image:**



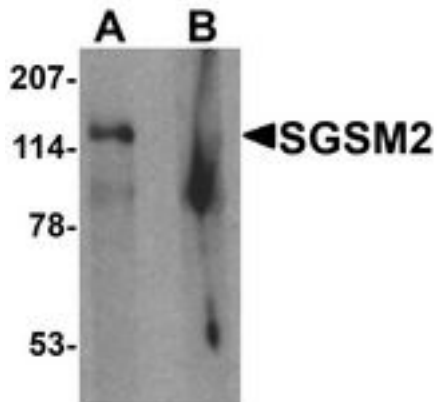
Human Colon: Formalin-Fixed, Paraffin-Embedded (FFPE)

**Immunofluorescence Image:**



Immunofluorescence of SGSM2 in human brain tissue with SGSM2 antibody at 20 ug/ml.

**Western Blot Image:**



Western blot analysis of SGSM2 in human cerebellum tissue lysate with SGSM2 antibody at 1 ug/ml in (A) the absence and (B) the presence of blocking peptide

**Requested From:**

Japan

Laboratory Reagent For In Vitro Research Use Only

Not for resale without prior written consent from LifeSpan BioSciences, Inc.

Created on 9/24/2014

© 2014 LifeSpan BioSciences