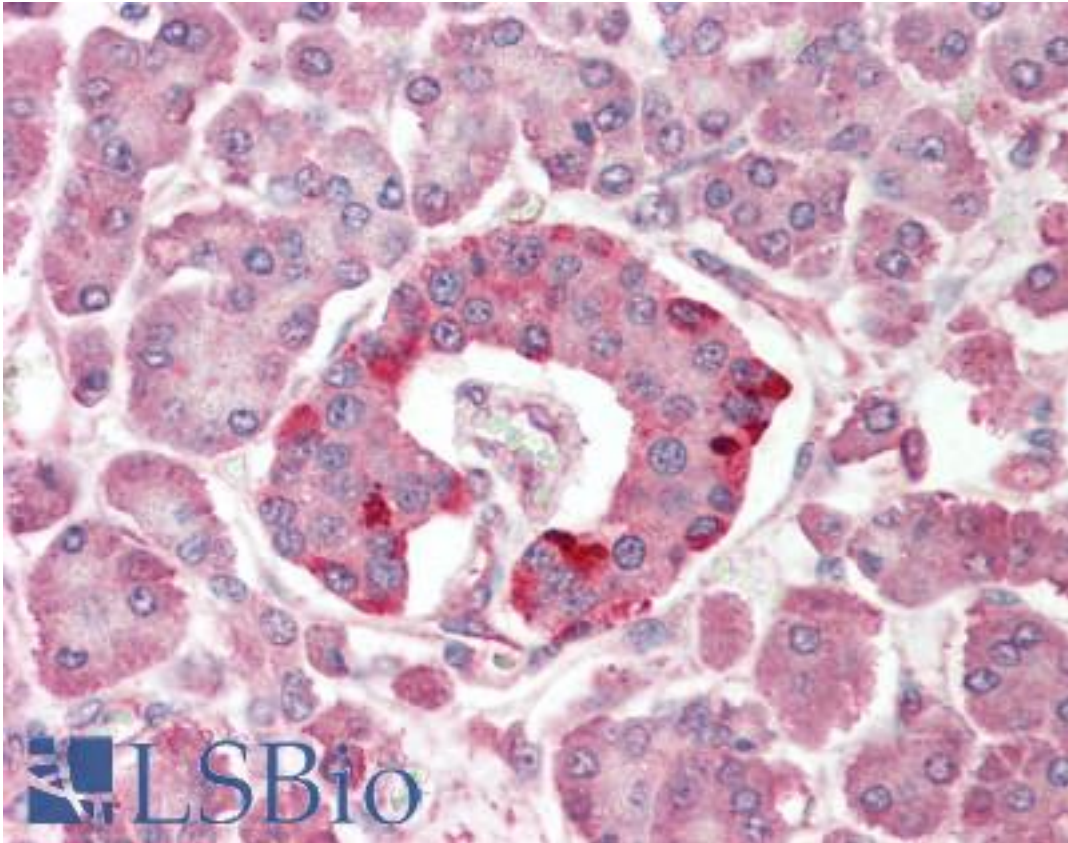


SCOP / PHLPP Rabbit anti-Human Polyclonal (N-Terminus) Antibody - LS-B8860 - LSBio

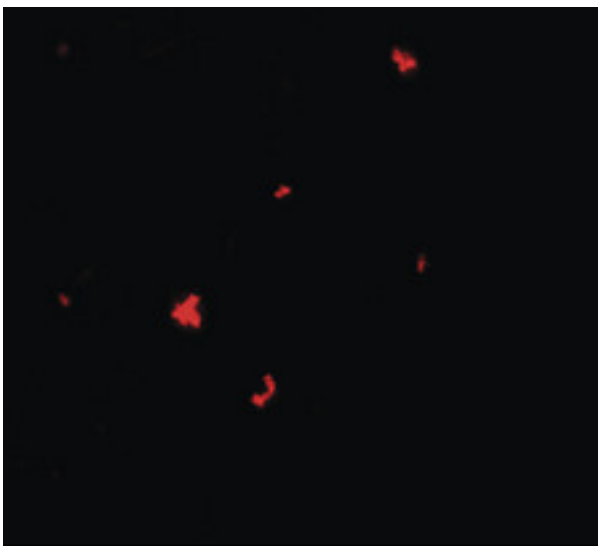
CatalogID:	LS-B8860
Validation:	This antibody replaces catalog number LS-C153645. It has been validated for use in the following assays: IHC-P.
Target:	PH domain and leucine rich repeat protein phosphatase 1 (PHLPP1)
Synonyms:	PHLPP1 Antibody, HSCOP Antibody, KIAA0606 Antibody, PLEKHE1 Antibody, SCOP Antibody, PHLPP Antibody
Host	PHLPP1 antibody was produced in Rabbit
Clonality:	Polyclonal
Immunogen Species:	SCOP / PHLPP antibody was raised against Human
Antigen Type:	Synthetic peptide
Immunogen:	SCOP / PHLPP antibody was raised against an 18 amino acid peptide near the amino terminus of human PHLPP1.
Specificity:	Human PHLPP1 / PHLPP. At least four isoforms are known to exist; this antibody will only detect the largest isoform. PHLPP1 antibody is predicted to not cross react with PHLPP2.
Epitope:	N-Terminus
Reactivity:	Human
Purification:	Immunoaffinity purified
Presentation:	PBS, 0.02% sodium azide
Recommended Storage:	Long term: -20°C; Short term: +4°C. Avoid repeat freeze-thaw cycles.
Usage Summary:	PHLPP1 antibody can be used for detection of PHLPP1 by Western blot at 1-2 ug/mL.
Uses:	IHC - Paraffin (5 µg/ml), Western blot (1 - 2 µg/ml) (Optimal dilution to be determined by the researcher)
Size:	50 µg
Concentration:	1 mg/ml

Immunohistochemistry Image:



Human Pancreas: Formalin-Fixed, Paraffin-Embedded (FFPE)

Immunofluorescence Image:



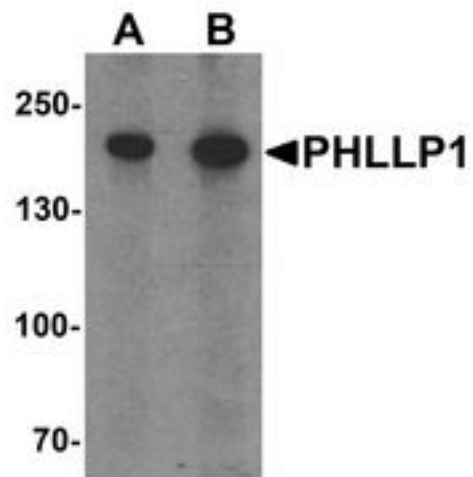
Immunofluorescence of PHLPP1 in SW480 cells with PHLPP1 antibody at 5 ug/ml.

Immunocytochemistry Image:



Immunocytochemistry of PHLPP1 in SW480 cells with PHLPP1 antibody at 2.5 ug/ml.

Western Blot Image:



Western blot analysis of PHLPP1 in SW480 cell lysate with PHLPP1 antibody at (A) 1 and (B) 2 ug/ml.

Requested From:

Japan

Laboratory Reagent For In Vitro Research Use Only

Not for resale without prior written consent from LifeSpan BioSciences, Inc.

Created on 9/24/2014

© 2014 LifeSpan BioSciences