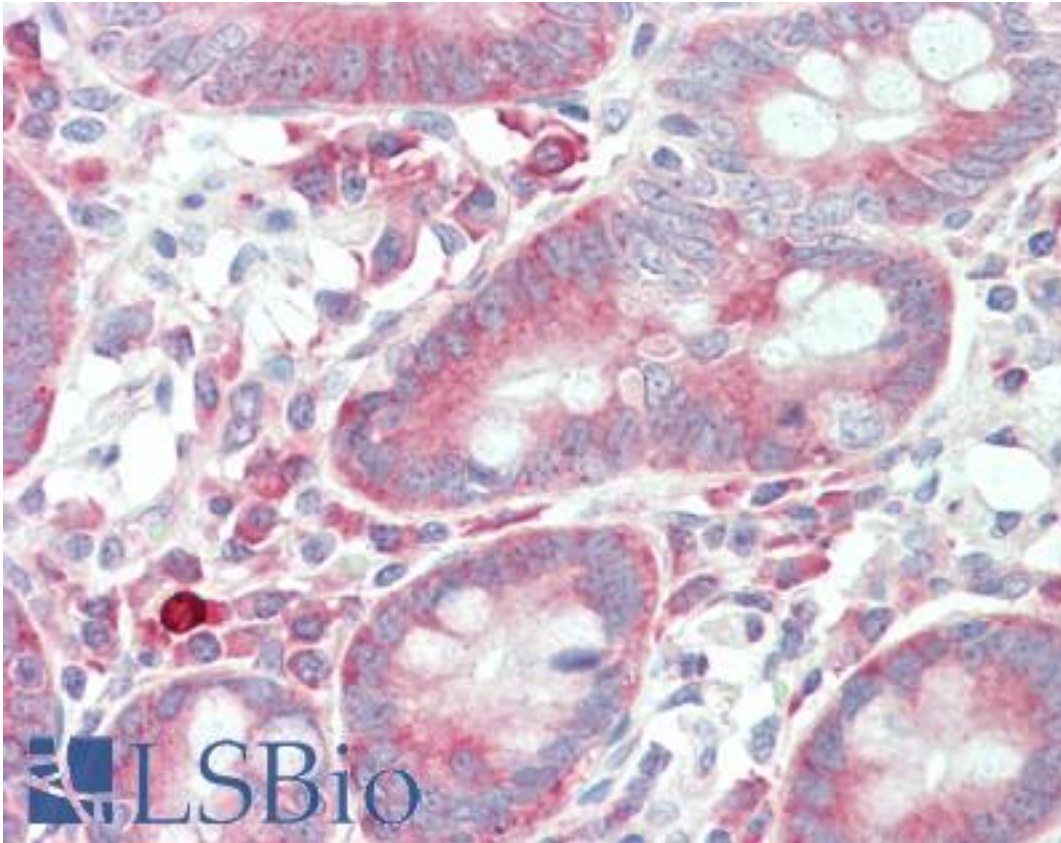


CASKIN1 Rabbit anti-Human Polyclonal (Internal) Antibody - LS-B8854 - LSBio

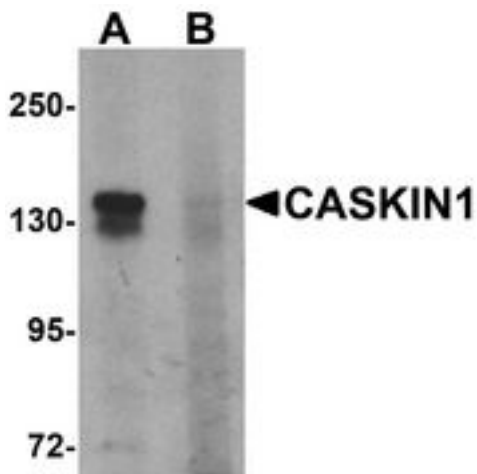
CatalogID:	LS-B8854
Validation:	This antibody replaces catalog number LS-C153635. It has been validated for use in the following assays: IHC-P.
Target:	CASK interacting protein 1 (CASKIN1)
Synonyms:	CASKIN1 Antibody, ANKS5A Antibody, CASK-interacting protein 1 Antibody, CASK interacting protein 1 Antibody, Caskin-1 Antibody, KIAA1306 Antibody
Host	CASKIN1 antibody was produced in Rabbit
Clonality:	Polyclonal
Immunogen Species:	CASKIN1 antibody was raised against Human
Antigen Type:	Synthetic peptide
Immunogen:	CASKIN1 antibody was raised against a 17 amino acid peptide near the center of human CASKIN1.
Specificity:	Human CASKIN1. CASKIN1 antibody is predicted to not cross-react with other CASKIN family members.
Epitope:	Internal
Reactivity:	Human
Purification:	Immunoaffinity purified
Presentation:	PBS, 0.02% sodium azide
Recommended Storage:	Long term: -20°C; Short term: +4°C. Avoid repeat freeze-thaw cycles.
Usage Summary:	CASKIN1 antibody can be used for detection of CASKIN1 by Western blot at 1-2 ug/mL.
Uses:	IHC - Paraffin (5 µg/ml), Western blot (1 - 2 µg/ml) (Optimal dilution to be determined by the researcher)
Size:	50 µg
Concentration:	1 mg/ml

Immunohistochemistry Image:



Human Small Intestine: Formalin-Fixed, Paraffin-Embedded (FFPE)

Western Blot Image:



Western blot analysis of CASKIN1 in HeLa cell lysate with CASKIN1 antibody at 1 ug/ml in (A) the absence and (B) the presence of blocking peptide.

Requested From:

Japan

Laboratory Reagent For In Vitro Research Use Only

Not for resale without prior written consent from LifeSpan BioSciences, Inc.

Created on 9/24/2014

© 2014 LifeSpan BioSciences