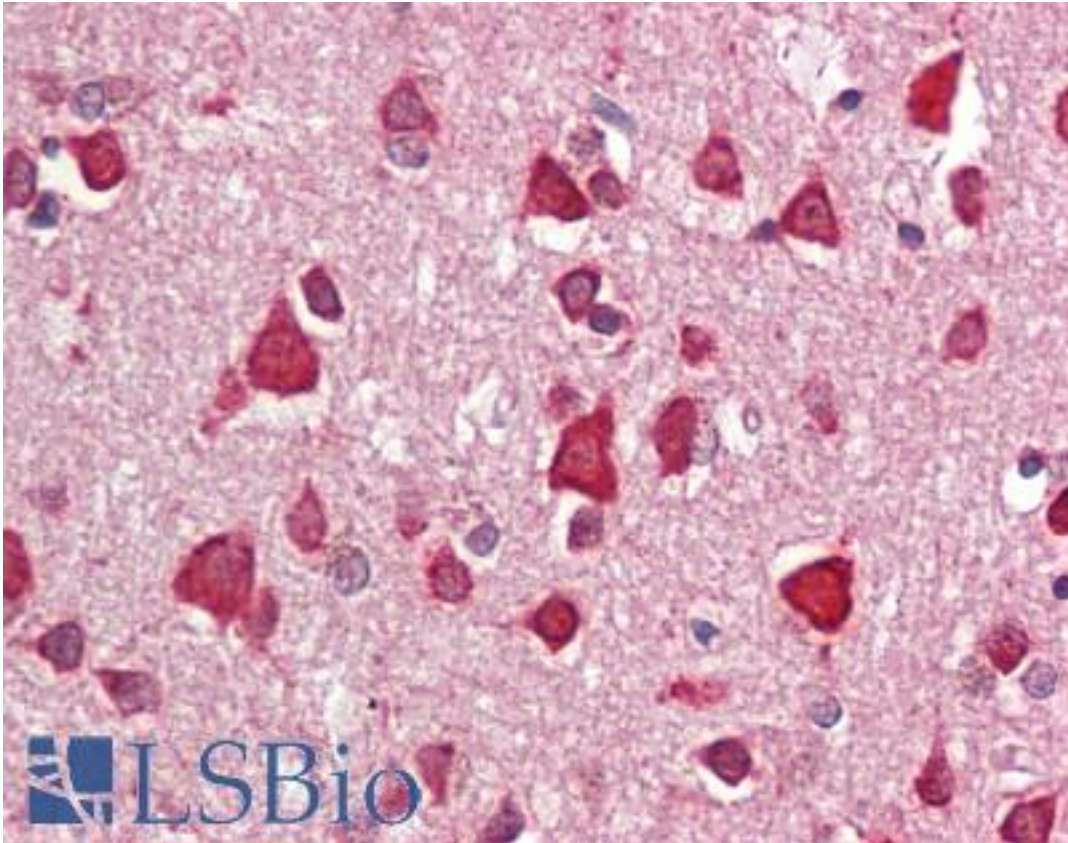


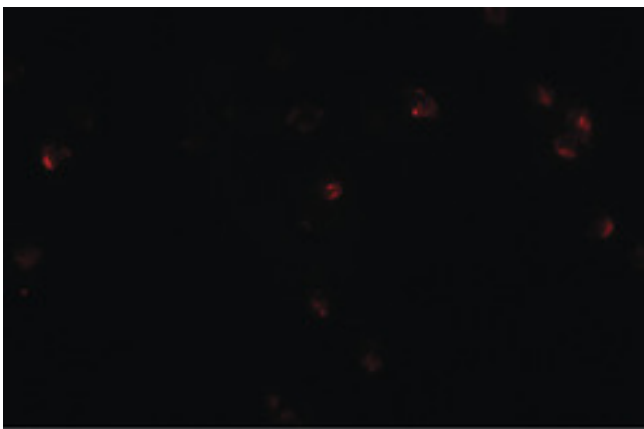
CRIM1 Rabbit anti-Human Polyclonal (C-Terminus) Antibody - LS-B8848 - LSBio	
CatalogID:	LS-B8848
Validation:	This antibody replaces catalog number LS-C153626. It has been validated for use in the following assays: IHC-P.
Target:	cysteine rich transmembrane BMP regulator 1 (chordin-like) (CRIM1)
Synonyms:	CRIM1 Antibody, CRIM-1 Antibody, Cysteine-rich motor neuron 1 Antibody, S52 Antibody
Host	CRIM1 antibody was produced in Rabbit
Clonality:	Polyclonal
Immunogen Species:	CRIM1 antibody was raised against Human
Antigen Type:	Synthetic peptide
Immunogen:	CRIM1 antibody was raised against a 17 amino acid peptide near the carboxy terminus of human Crim1.
Specificity:	Human CRIM1. CRIM1 antibody is human reactive. CRIM1 antibody is predicted to not cross-react with CRIM2.
Epitope:	C-Terminus
Reactivity:	Human
Purification:	Immunoaffinity purified
Presentation:	PBS, 0.02% sodium azide
Recommended Storage:	Store at -20°C. Aliquot to avoid freeze/thaw cycles.
Usage Summary:	CRIM1 antibody can be used for detection of Crim1 by Western blot at 1-2 ug/ml.
Uses:	IHC - Paraffin (5 µg/ml), Western blot (1 - 2 µg/ml) (Optimal dilution to be determined by the researcher)
Size:	50 µg
Concentration:	1 mg/ml

Immunohistochemistry Image:



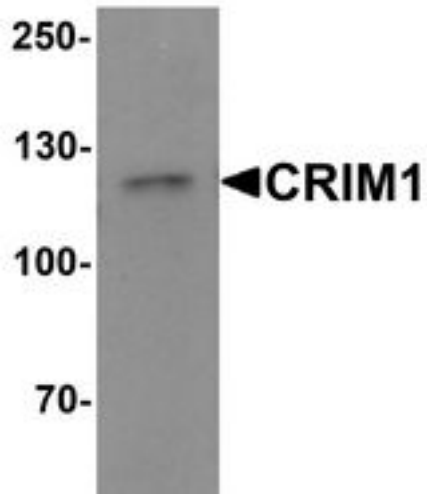
Human Brain, Cortex: Formalin-Fixed, Paraffin-Embedded (FFPE)

Immunofluorescence Image:



Immunofluorescence of CRIM1 in Jurkat cells with CRIM1 antibody at 20 ug/ml.

Western Blot Image:



Western blot analysis of CRIM1 in Jurkat cell lysate with Crim1 antibody at 1 ug/ml.

Requested From:

Japan

Laboratory Reagent For In Vitro Research Use Only

Not for resale without prior written consent from LifeSpan BioSciences, Inc.

Created on 9/24/2014

© 2014 LifeSpan BioSciences