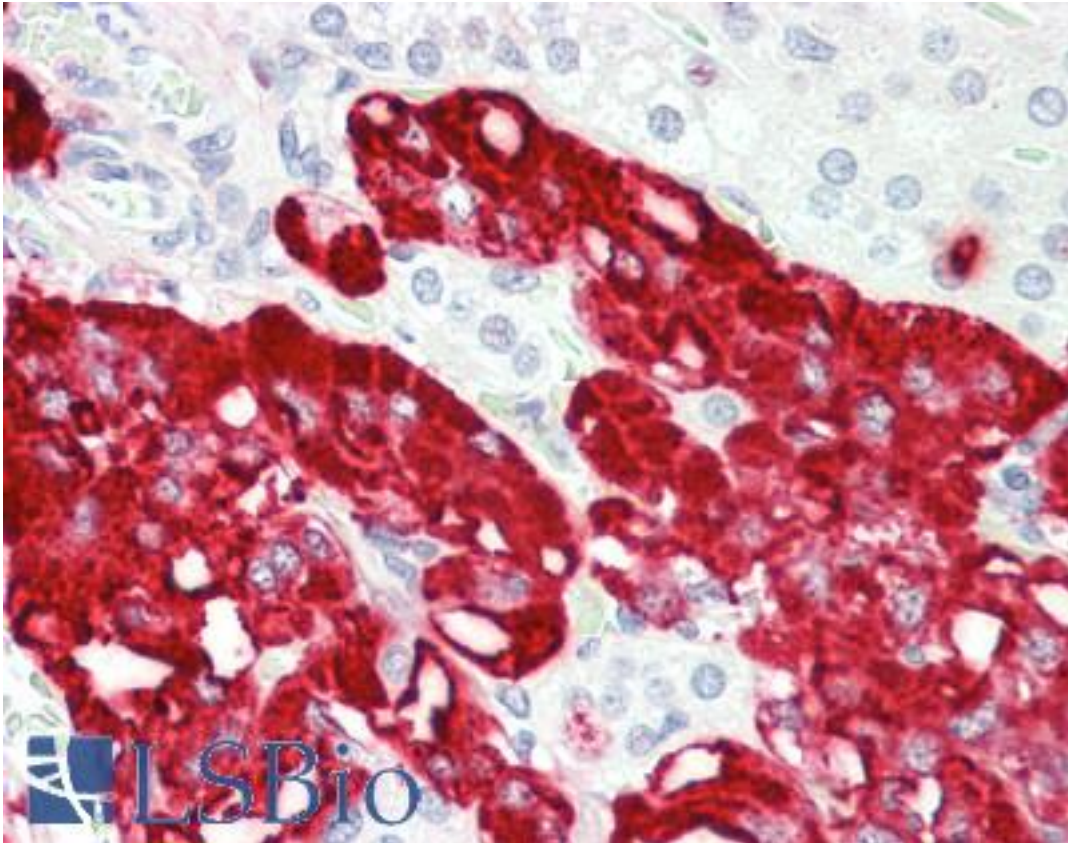


TCTEX1D1 Rabbit anti-Human Polyclonal (N-Terminus) Antibody - LS-B8846 - LSBio

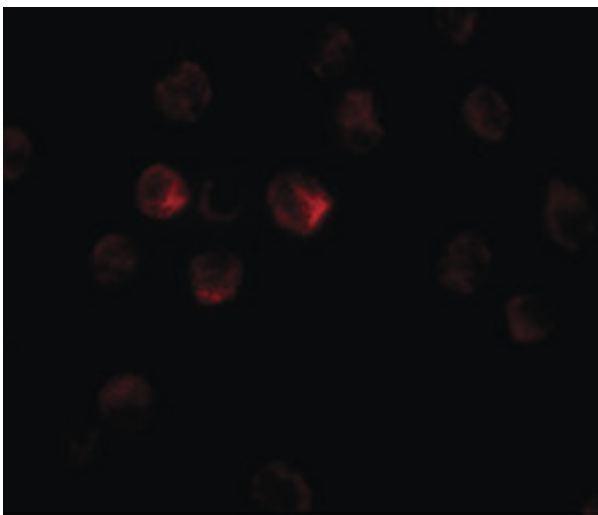
CatalogID:	LS-B8846
Validation:	This antibody replaces catalog number LS-C153621. It has been validated for use in the following assays: IHC-P.
Target:	Tctex1 Domain Containing 1 (TCTEX1D1)
Synonyms:	TCTEX1D1 Antibody, Tctex1 domain containing 1 Antibody, RP11-266I14.2 Antibody
Host	TCTEX1D1 antibody was produced in Rabbit
Clonality:	Polyclonal
Immunogen Species:	TCTEX1D1 antibody was raised against Human
Antigen Type:	Synthetic peptide
Immunogen:	TCTEX1D1 antibody was raised against a 16 amino acid peptide near the amino terminus of human TCTEX1D1.
Specificity:	Human TCTEX1D1. At least three isoforms are known to exist; this antibody will detect the two largest isoforms. TCTEX1D1 is predicted to not cross-react with other members of the TCTEX-type family.
Epitope:	N-Terminus
Reactivity:	Human
Purification:	Immunoaffinity purified
Presentation:	PBS, 0.02% sodium azide
Recommended Storage:	Long term: -20°C; Short term: +4°C. Avoid repeat freeze-thaw cycles.
Usage Summary:	TCTEX1D1 antibody can be used for detection of TCTEX1D1 by Western blot at 1-2 ug/mL.
Uses:	IHC - Paraffin (5 µg/ml), Western blot (1 - 2 µg/ml) (Optimal dilution to be determined by the researcher)
Size:	50 µg
Concentration:	1 mg/ml

Immunohistochemistry Image:



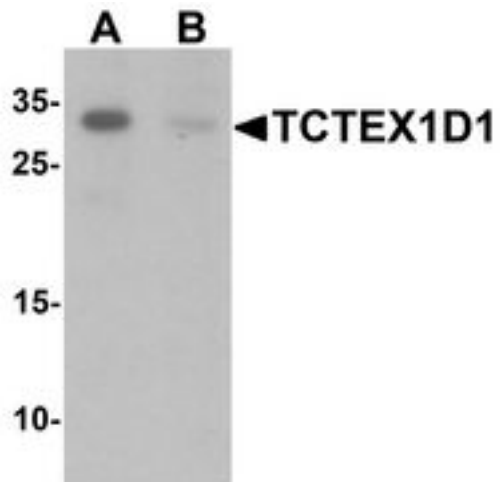
Human, Adrenal: Formalin-Fixed Paraffin-Embedded (FFPE)

Immunofluorescence Image:



Immunofluorescence of TCTEX1D1 in K562 cells with TCTEX1D1 antibody at 20 ug/ml.

Western Blot Image:



Western blot analysis of TCTEX1D1 in K562 cell lysate with TCTEX1D1 antibody at 1 ug/ml in (A) the absence and (B) the presence of blocking peptide.

Requested From:

Japan

Laboratory Reagent For In Vitro Research Use Only

Not for resale without prior written consent from LifeSpan BioSciences, Inc.

Created on 9/24/2014

© 2014 LifeSpan BioSciences