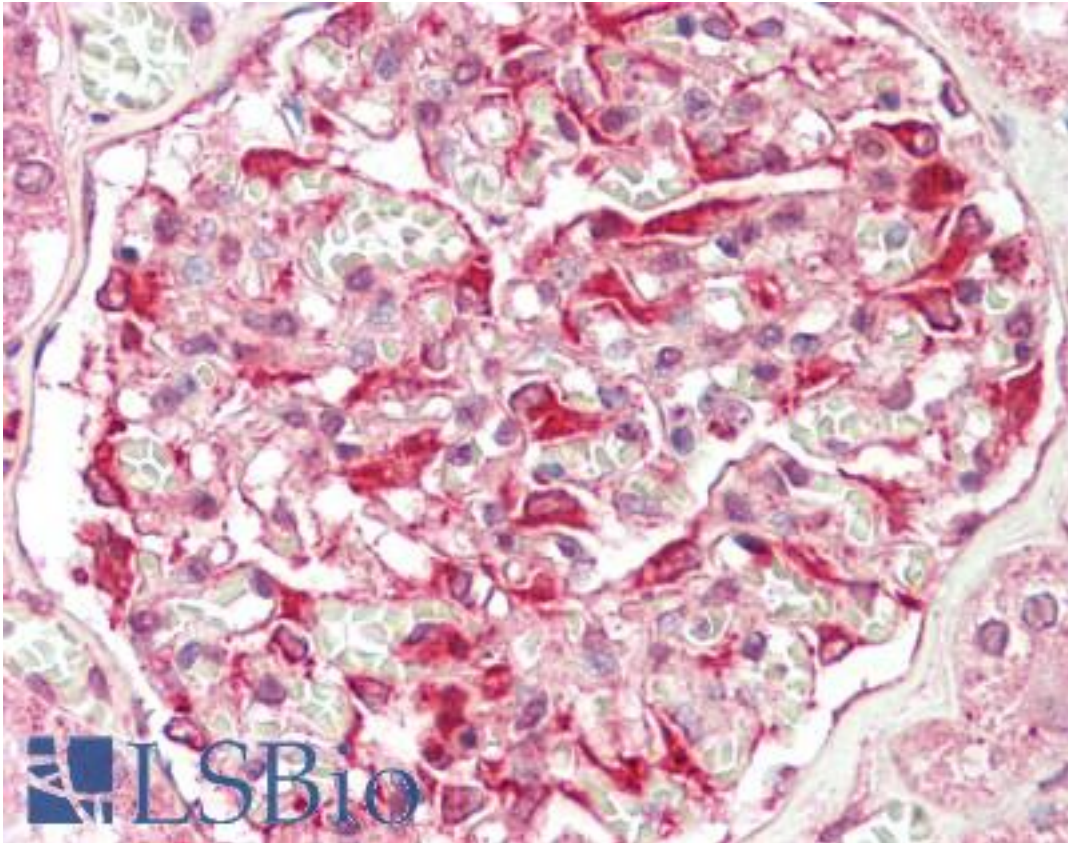


**ZFYVE21 Rabbit anti-Human Polyclonal (N-Terminus) Antibody - LS-B8842 - LSBio**

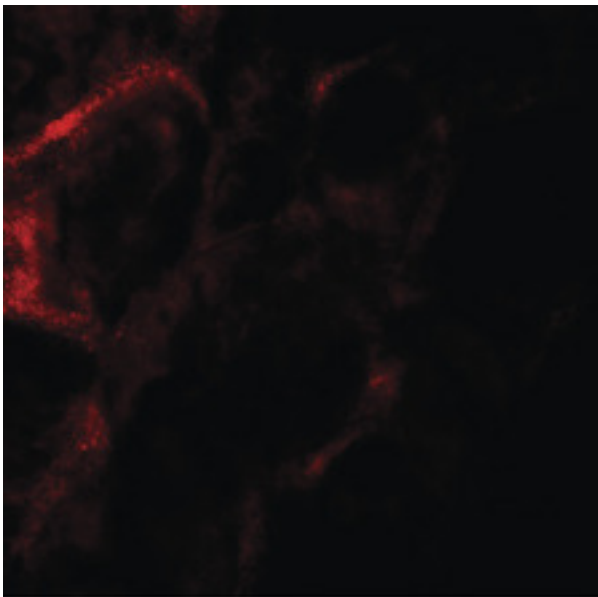
<b>CatalogID:</b>	LS-B8842
<b>Validation:</b>	This antibody replaces catalog number LS-C153616. It has been validated for use in the following assays: IHC-P.
<b>Target:</b>	Zinc Finger, FYVE Domain Containing 21 (ZFYVE21)
<b>Synonyms:</b>	ZFYVE21 Antibody, ZF21 Antibody, FYVE domain containing 21 Antibody
<b>Host</b>	ZFYVE21 antibody was produced in Rabbit
<b>Clonality:</b>	Polyclonal
<b>Immunogen Species:</b>	ZFYVE21 antibody was raised against Human
<b>Antigen Type:</b>	Synthetic peptide
<b>Immunogen:</b>	ZFYVE21 antibody was raised against a 15 amino acid peptide near the amino terminus of human ZF21.
<b>Specificity:</b>	Human ZFYVE21. At least two isoforms of ZF21 are known to exist; this antibody will detect both isoforms.
<b>Epitope:</b>	N-Terminus
<b>Reactivity:</b>	Human
<b>Purification:</b>	Immunoaffinity purified
<b>Presentation:</b>	PBS, 0.02% sodium azide
<b>Recommended Storage:</b>	Store at -20°C. Aliquot to avoid freeze/thaw cycles.
<b>Usage Summary:</b>	ZF21 antibody can be used for detection of ZF21 by Western blot at 1-2 ug/ml.
<b>Uses:</b>	IHC - Paraffin (5 µg/ml), Western blot (1 - 2 µg/ml) (Optimal dilution to be determined by the researcher)
<b>Size:</b>	50 µg
<b>Concentration:</b>	1 mg/ml

**Immunohistochemistry Image:**



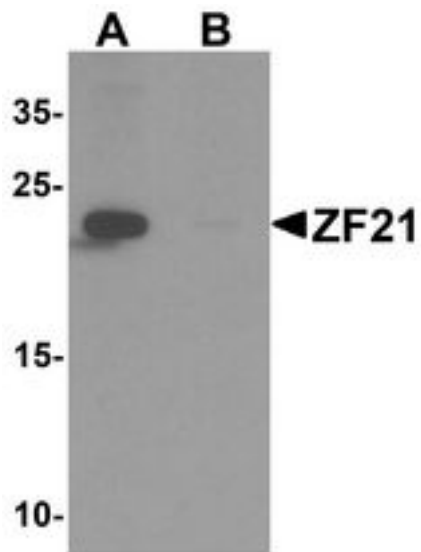
Human Kidney: Formalin-Fixed, Paraffin-Embedded (FFPE)

**Immunofluorescence Image:**



Immunofluorescence of ZF21 in human kidney tissue with ZF21 antibody at 20 ug/ml.

**Western Blot Image:**



Western blot analysis of ZF21 in 3T3 cell tissue lysate with ZF21 antibody at 1 ug/ml in (A) the absence and (B) the presence of blocking peptide.

**Requested From:**

Japan

Laboratory Reagent For In Vitro Research Use Only

Not for resale without prior written consent from LifeSpan BioSciences, Inc.

Created on 9/24/2014

© 2014 LifeSpan BioSciences