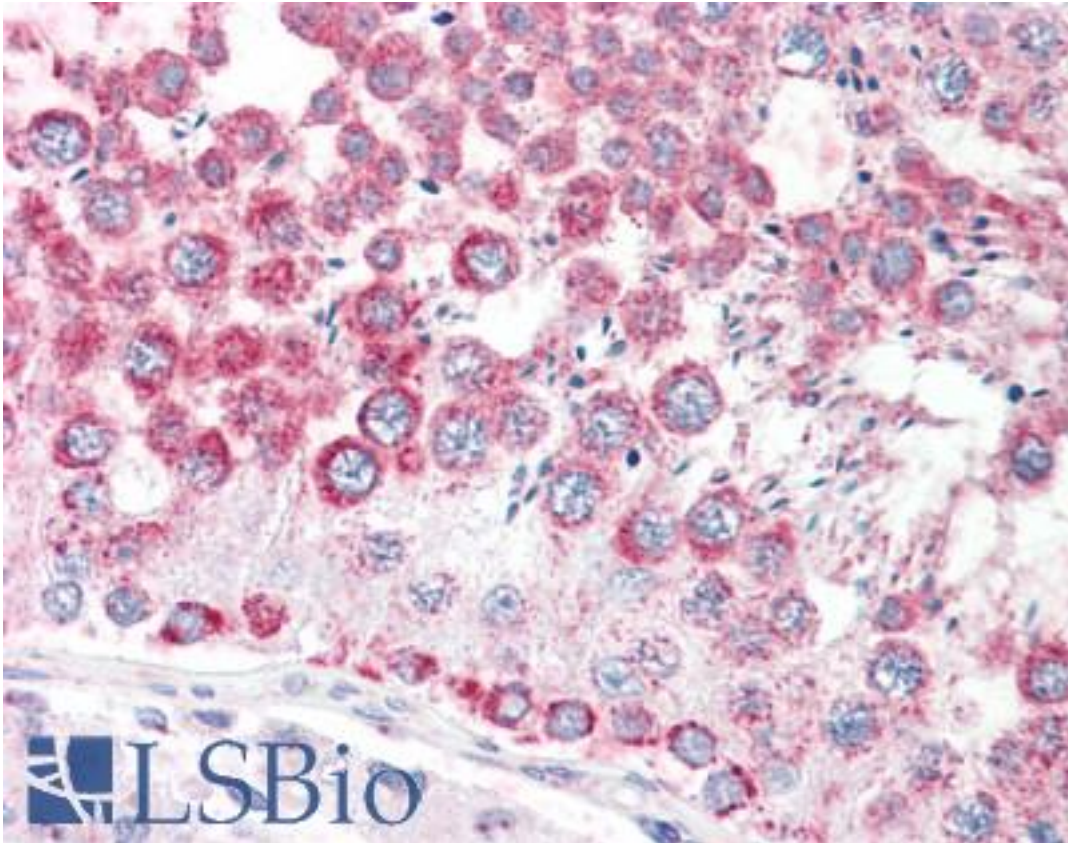


CCP110 Rabbit anti-Human Polyclonal (C-Terminus) Antibody - LS-B8825 - LSBio

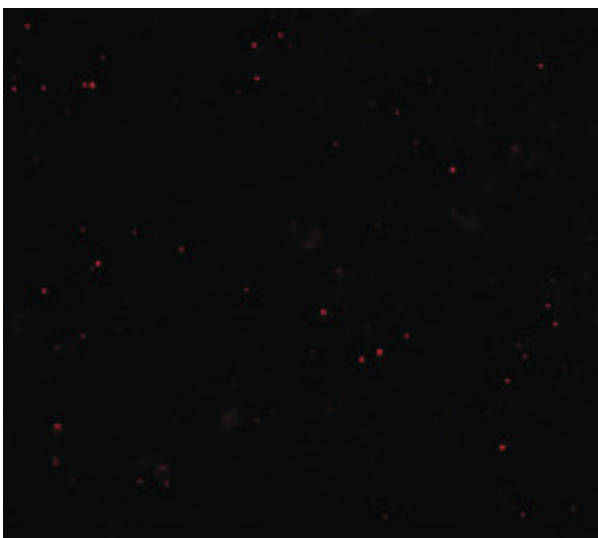
CatalogID:	LS-B8825
Validation:	This antibody replaces catalog number LS-C153694. It has been validated for use in the following assays: IHC-P.
Target:	centriolar coiled coil protein 110kDa (CCP110)
Synonyms:	CCP110 Antibody, CP110 Antibody, Centrosomal protein of 110 kDa Antibody, KIAA0419 Antibody, Centrosomal protein CP110 Antibody, Cep110 Antibody
Host	CCP110 antibody was produced in Rabbit
Clonality:	Polyclonal
Immunogen Species:	CCP110 antibody was raised against Human
Antigen Type:	Synthetic peptide
Immunogen:	CCP110 antibody was raised against a 17 amino acid peptide near the carboxy terminus of human CCP110.
Specificity:	Human CCP110 / CP110. Two isoforms of CCP110 are known to exist; this antibody will only detect the longer isoform.
Epitope:	C-Terminus
Reactivity:	Human
Purification:	Immunoaffinity purified
Presentation:	PBS, 0.02% sodium azide
Recommended Storage:	Store at -20°C. Aliquot to avoid freeze/thaw cycles.
Usage Summary:	CCP110 antibody can be used for detection of CCP110 by Western blot at 1-2 ug/ml.
Uses:	IHC - Paraffin (5 µg/ml), Western blot (1 - 2 µg/ml) (Optimal dilution to be determined by the researcher)
Size:	50 µg
Concentration:	1 mg/ml

Immunohistochemistry Image:



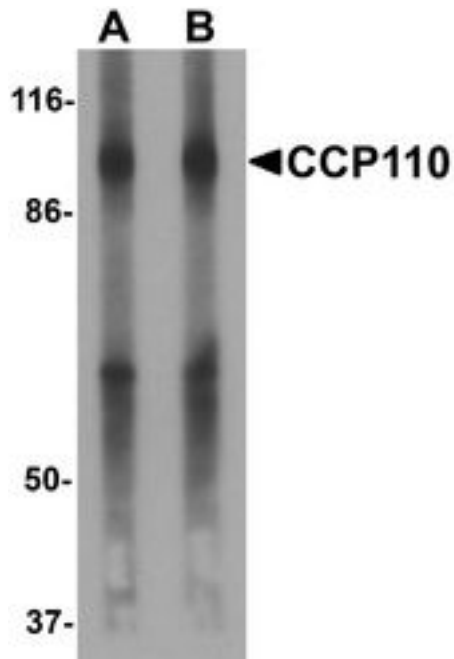
Human Testis: Formalin-Fixed, Paraffin-Embedded (FFPE)

Immunofluorescence Image:



Immunofluorescence of CCP110 in rat colon tissue with CCP110 antibody at 20 ug/ml.

Western Blot Image:



Western blot analysis of CCP110 in human colon tissue lysate with CCP110 antibody at (A) 1 and (B) 2 ug/ml.

Requested From:

Japan

Laboratory Reagent For In Vitro Research Use Only

Not for resale without prior written consent from LifeSpan BioSciences, Inc.

Created on 9/24/2014

© 2014 LifeSpan BioSciences