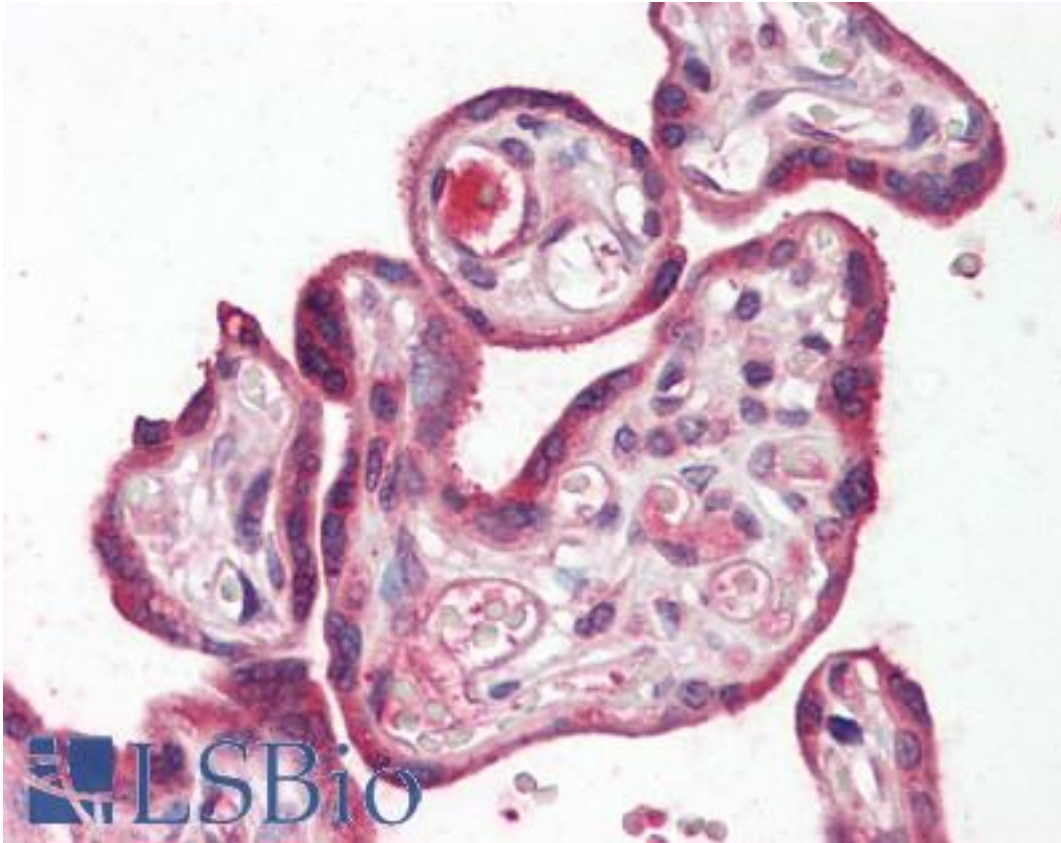


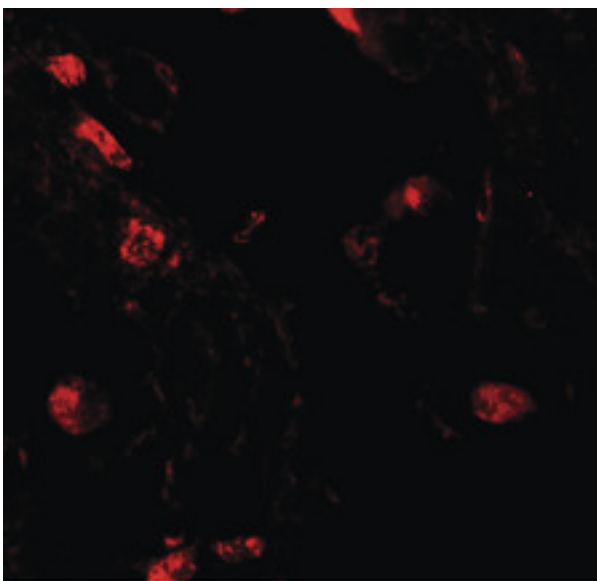
RILPL2 Rabbit anti-Human Polyclonal (Internal) Antibody - LS-B8819 - LSBio	
<b>CatalogID:</b>	LS-B8819
<b>Validation:</b>	This antibody replaces catalog number LS-C153686. It has been validated for use in the following assays: IHC-P.
<b>Target:</b>	Rab Interacting Lysosomal Protein-Like 2 (RILPL2)
<b>Synonyms:</b>	RILPL2 Antibody, p40phox-binding protein Antibody, RLP2 Antibody, RILP-like protein 2 Antibody
<b>Host</b>	RILPL2 antibody was produced in Rabbit
<b>Clonality:</b>	Polyclonal
<b>Immunogen Species:</b>	RILPL2 antibody was raised against Human
<b>Antigen Type:</b>	Synthetic peptide
<b>Immunogen:</b>	RILPL2 antibody was raised against an 16 amino acid peptide near the center of human RLP2.
<b>Specificity:</b>	Human RILPL2.
<b>Epitope:</b>	Internal
<b>Reactivity:</b>	Human
<b>Purification:</b>	Immunoaffinity purified
<b>Presentation:</b>	PBS, 0.02% sodium azide
<b>Recommended Storage:</b>	Long term: -20°C; Short term: +4°C. Avoid repeat freeze-thaw cycles.
<b>Usage Summary:</b>	RLP2 antibody can be used for detection of RLP2 by Western blot at 1-2 ug/mL.
<b>Uses:</b>	IHC - Paraffin (5 µg/ml), Western blot (1 - 2 µg/ml) (Optimal dilution to be determined by the researcher)
<b>Size:</b>	50 µg
<b>Concentration:</b>	1 mg/ml

**Immunohistochemistry Image:**



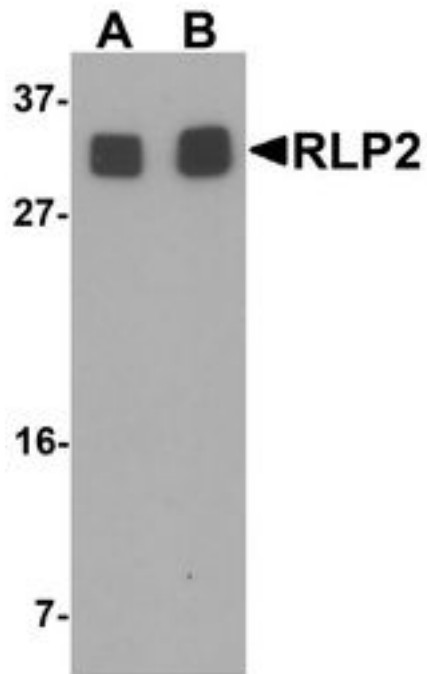
Human Placenta: Formalin-Fixed, Paraffin-Embedded (FFPE)

**Immunofluorescence Image:**



Immunofluorescence of RLP2 in human lung tissue with RLP2 antibody at 20 ug/ml.

Western Blot Image:



Western blot analysis of RLP2 in A549 cell lysate with RLP2 antibody at (A) 1 and (B) 2 ug/ml.

Requested From:

Japan

Laboratory Reagent For In Vitro Research Use Only

Not for resale without prior written consent from LifeSpan BioSciences, Inc.

Created on 9/24/2014

© 2014 LifeSpan BioSciences