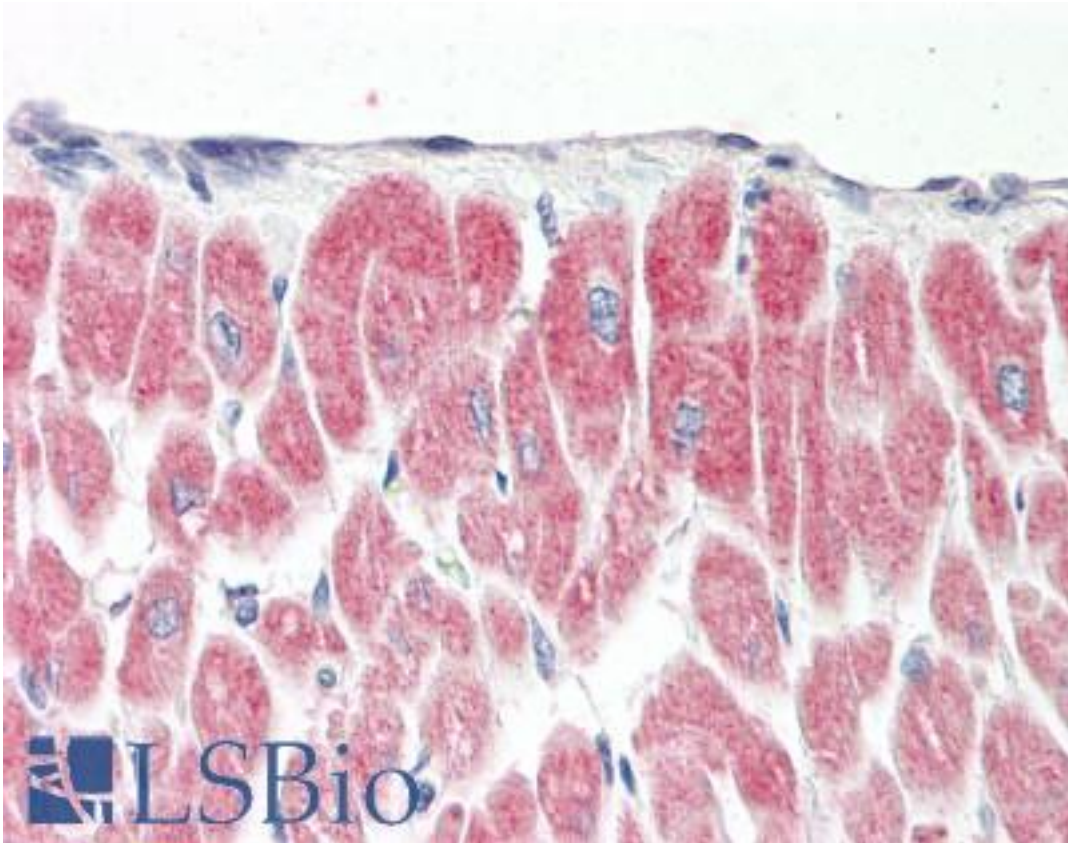


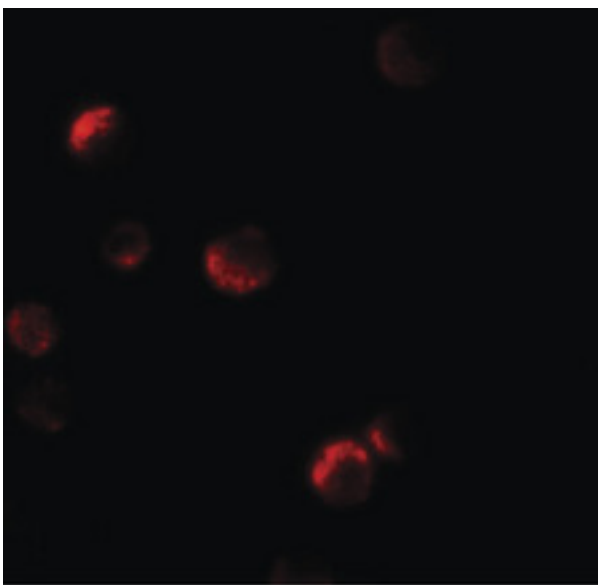
YPEL1 Rabbit anti-Human Polyclonal (N-Terminus) Antibody - LS-B8809 - LSBio	
CatalogID:	LS-B8809
Validation:	This antibody replaces catalog number LS-C153673. It has been validated for use in the following assays: IHC-P.
Target:	Yippee-like 1 (Drosophila) (YPEL1)
Synonyms:	YPEL1 Antibody, FKSG3 Antibody, Yippee-like 1 (Drosophila) Antibody, Protein yippee-like 1 Antibody
Host	YPEL1 antibody was produced in Rabbit
Clonality:	Polyclonal
Immunogen Species:	YPEL1 antibody was raised against Human
Antigen Type:	Synthetic peptide
Immunogen:	YPEL1 antibody was raised against a 11 amino acid peptide near the amino terminus of human YPEL1.
Specificity:	Human YPEL1.
Epitope:	N-Terminus
Reactivity:	Human
Purification:	Immunoaffinity purified
Presentation:	PBS, 0.02% sodium azide
Recommended Storage:	Long term: -20°C; Short term: +4°C. Avoid repeat freeze-thaw cycles.
Usage Summary:	YPEL1 antibody can be used for detection of YPEL1 by Western blot at 1-2 ug/mL.
Uses:	IHC - Paraffin (5 µg/ml), Western blot (1 - 2 µg/ml) (Optimal dilution to be determined by the researcher)
Size:	50 µg
Concentration:	1 mg/ml

Immunohistochemistry Image:



Human Heart: Formalin-Fixed, Paraffin-Embedded (FFPE)

Immunofluorescence Image:



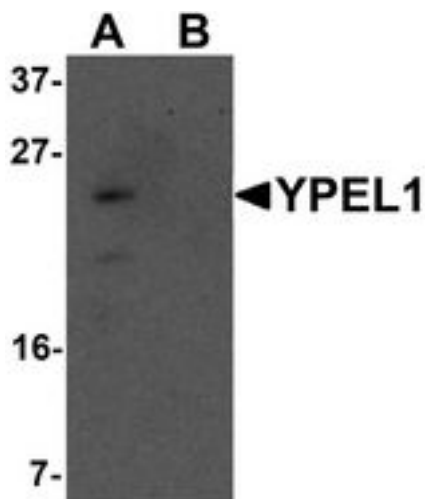
Immunofluorescence of YPEL1 in HeLa cells with YPEL1 antibody at 20 ug/ml.

Immunocytochemistry Image:



Immunocytochemistry of YPEL1 in HeLa cells with YPEL1 antibody at 2.5 ug/ml.

Western Blot Image:



Western blot analysis of YPEL1 in HeLa cell lysate with YPEL1 antibody at 1 ug/ml in (A) the absence and (B) the presence of blocking peptide.

Requested From:

Japan

Laboratory Reagent For In Vitro Research Use Only

Not for resale without prior written consent from LifeSpan BioSciences, Inc.

Created on 9/24/2014

© 2014 LifeSpan BioSciences