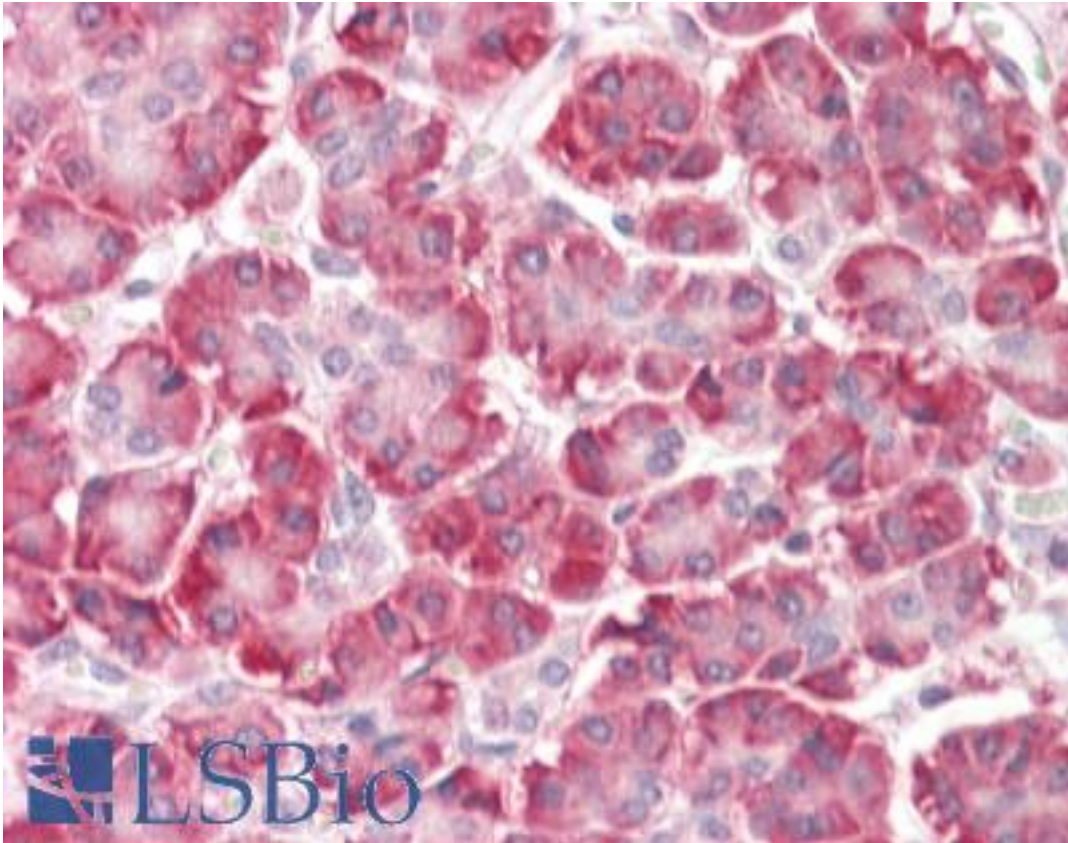


C9orf116 Rabbit anti-Human Polyclonal (N-Terminus) Antibody - LS-B8801 - LSBio

CatalogID:	LS-B8801
Validation:	This antibody replaces catalog number LS-C153750. It has been validated for use in the following assays: IHC-P.
Target:	chromosome 9 open reading frame 116 (C9orf116)
Synonyms:	C9orf116 Antibody, RbEST47 Antibody, RP11-426A6.4 Antibody, Pierce 1 Antibody, PIERCE1 Antibody, UPF0691 protein C9orf116 Antibody
Host	C9orf116 antibody was produced in Rabbit
Clonality:	Polyclonal
Immunogen Species:	C9orf116 antibody was raised against Human
Antigen Type:	Synthetic peptide
Immunogen:	C9orf116 antibody was raised against a 16 amino acid peptide near the amino terminus of human PIERCE1.
Specificity:	Human Pierce 1. PIERCE1 antibody is predicted to not cross-react with other UPF0691 family members.
Epitope:	N-Terminus
Reactivity:	Human
Purification:	Immunoaffinity purified
Presentation:	PBS, 0.02% sodium azide
Recommended Storage:	Long term: -20°C; Short term: +4°C. Avoid repeat freeze-thaw cycles.
Usage Summary:	PIERCE1 antibody can be used for detection of PIERCE1 by Western blot at 1-2 ug/mL.
Uses:	IHC - Paraffin (5 µg/ml), Western blot (1 - 2 µg/ml) (Optimal dilution to be determined by the researcher)
Size:	50 µg
Concentration:	1 mg/ml

Immunohistochemistry Image:



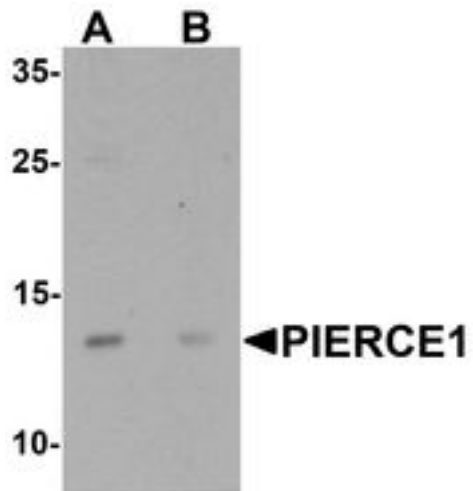
Human Pancreas: Formalin-Fixed, Paraffin-Embedded (FFPE)

Immunocytochemistry Image:



Immunocytochemistry of PIERCE1 in A20 cells with PIERCE1 antibody at 2.5 ug/ml.

Western Blot Image:



Western blot analysis of PIERCE1 in A20 cell lysate with PIERCE1 antibody at 1 ug/ml in (A) the absence and (B) the presence of blocking peptide.

Requested From:

Japan

Laboratory Reagent For In Vitro Research Use Only

Not for resale without prior written consent from LifeSpan BioSciences, Inc.

Created on 9/24/2014

© 2014 LifeSpan BioSciences