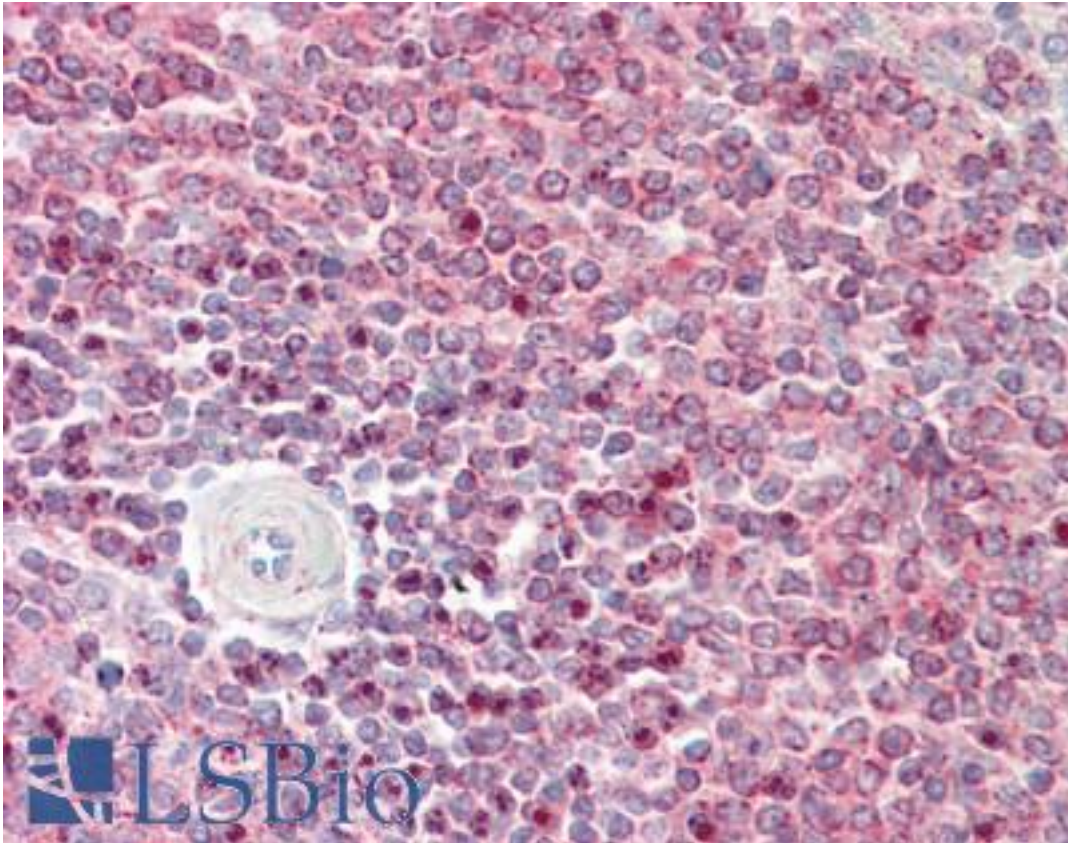


IST1 Rabbit anti-Human Polyclonal Antibody - LS-B8795 - LSBio

CatalogID:	LS-B8795
Validation:	This antibody replaces catalog number LS-C155137. It has been validated for use in the following assays: IHC-P.
Target:	increased sodium tolerance 1 homolog (yeast) (IST1)
Synonyms:	IST1 Antibody, CRS1 Antibody, HIST1 Antibody, IST1 homolog Antibody, KIAA0174 Antibody, OLC1 Antibody, Increased sodium tolerance-1 Antibody, SCS Antibody, Overexpressed in lung cancer 1 Antibody, TWACS3 Antibody
Host	IST1 antibody was produced in Rabbit
Clonality:	Polyclonal
Isotype:	IgG
Immunogen Species:	IST1 antibody was raised against Human
Antigen Type:	Recombinant protein
Immunogen:	IST1 antibody was raised against recombinant protein fragment contain a sequence corresponding to a region within amino acids 125 and 317 of Human KIAA0174. Percent identity by BLAST analysis: Human (100%).
Specificity:	Human IST1
Reactivity:	Human
Purification:	Immunoaffinity purified
Presentation:	PBS, pH 7, 40% Glycerol, 0.01% Thimerosal
Recommended Storage:	Aliquot and freeze at -20° C. Avoid freeze-thaw cycles.
Usage Summary:	Tested in Western blot with recombinant protein, not yet shown to detect endogenous KIAA0174.
Uses:	IHC - Paraffin (10 µg/ml), Western blot (Optimal dilution to be determined by the researcher)
Size:	50 µl
Concentration:	1 mg/ml

Immunohistochemistry Image:



Human Spleen: Formalin-Fixed, Paraffin-Embedded (FFPE)

Requested From:

Japan

Laboratory Reagent For In Vitro Research Use Only

Not for resale without prior written consent from LifeSpan BioSciences, Inc.

Created on 9/24/2014

© 2014 LifeSpan BioSciences