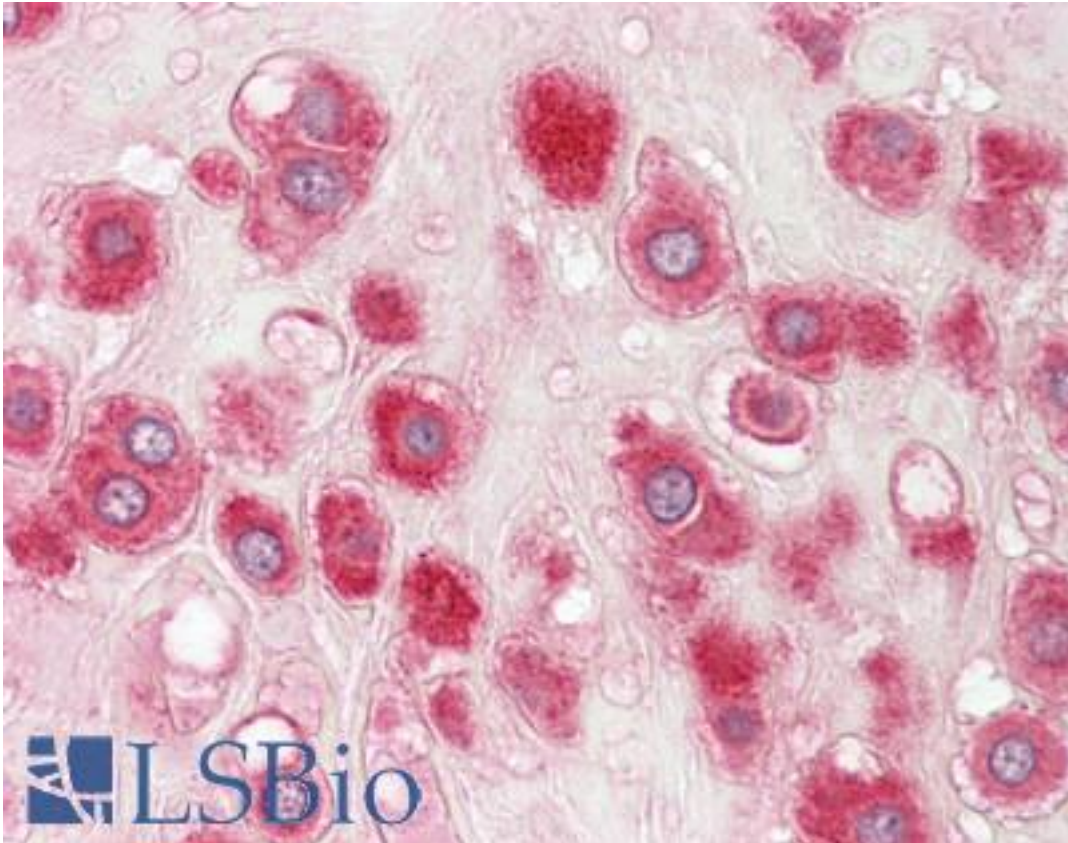


**RPLP1 Rabbit anti-Human Polyclonal Antibody - LS-B8793 - LSBio**

<b>CatalogID:</b>	LS-B8793
<b>Validation:</b>	This antibody replaces catalog number LS-C155115. It has been validated for use in the following assays: IHC-P.
<b>Target:</b>	ribosomal protein, large, P1 (RPLP1)
<b>Synonyms:</b>	RPLP1 Antibody, Ribosomal protein p1, acidic Antibody, RPP1 Antibody, p1 Antibody, LP1 Antibody, Ribosomal protein, large, P1 Antibody
<b>Host</b>	RPLP1 antibody was produced in Rabbit
<b>Clonality:</b>	Polyclonal
<b>Isotype:</b>	IgG
<b>Immunogen Species:</b>	RPLP1 antibody was raised against Human
<b>Antigen Type:</b>	Recombinant protein
<b>Immunogen:</b>	RPLP1 antibody was raised against recombinant fragment corresponding to a region within amino acids 1 and 114 of RPLP1 (SwissProt P05386). Percent identity by BLAST analysis: Human, Monkey, Bovine (100%); Porcine (89%).
<b>Specificity:</b>	Human RPLP1
<b>Reactivity:</b>	Human, Monkey, Bovine
<b>Purification:</b>	Immunoaffinity purified
<b>Presentation:</b>	PBS, pH 7, 1% BSA, 20% Glycerol, 0.01% Thimerosal
<b>Recommended Storage:</b>	Aliquot and freeze at -20° C. Avoid freeze-thaw cycles.
<b>Usage Summary:</b>	Tested in Western blot with recombinant protein, not yet shown to detect endogenous RPLP1
<b>Uses:</b>	IHC - Paraffin (10 µg/ml), Western blot (Optimal dilution to be determined by the researcher)
<b>Size:</b>	50 µl
<b>Concentration:</b>	1 mg/ml

**Immunohistochemistry Image:**



Human Placenta: Formalin-Fixed, Paraffin-Embedded (FFPE)

**Requested From:**

Japan

Laboratory Reagent For In Vitro Research Use Only

Not for resale without prior written consent from LifeSpan BioSciences, Inc.

Created on 9/24/2014

© 2014 LifeSpan BioSciences