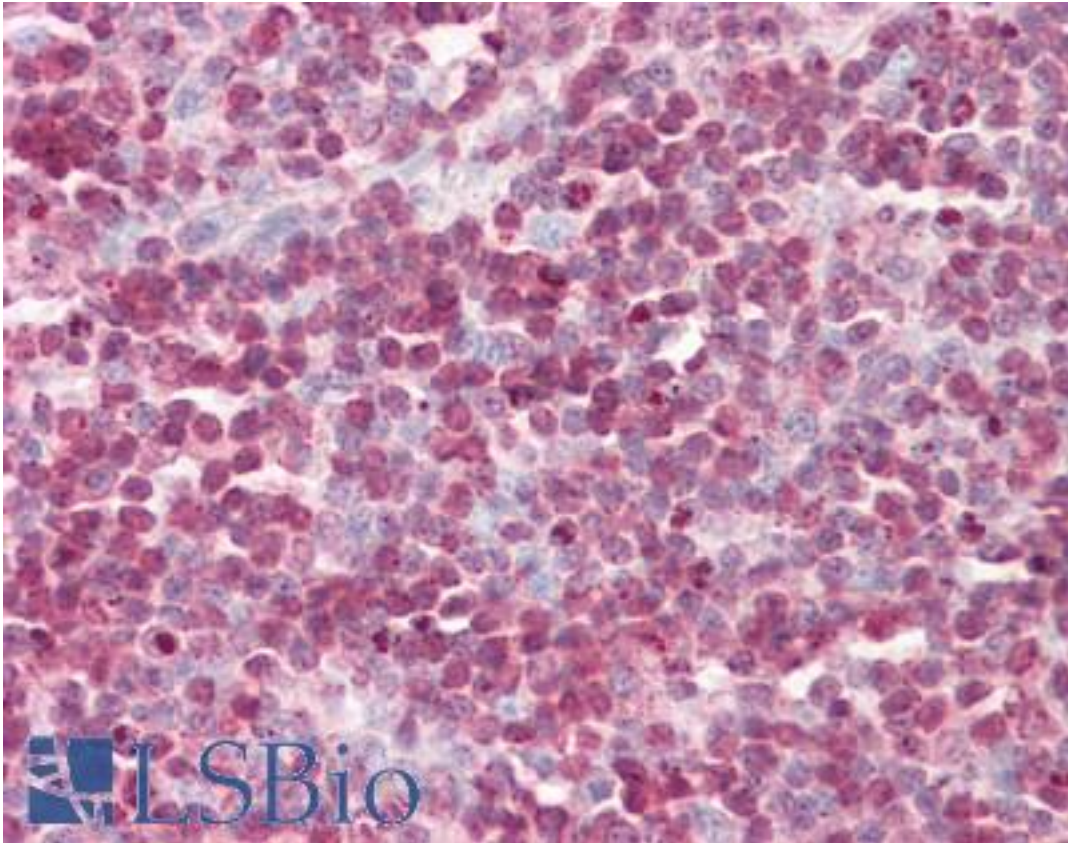


CSTB / Cystatin B / Stefin B Rabbit anti-Human Polyclonal Antibody - LS-B8792 - LSBio	
CatalogID:	LS-B8792
Validation:	This antibody replaces catalog number LS-C155107. It has been validated for use in the following assays: IHC-P.
Target:	cystatin B (stefin B) (CSTB)
Synonyms:	CSTB Antibody, CPI-B Antibody, EPM1 Antibody, EPM1A Antibody, PME Antibody, Stefin B Antibody, Stefin-B Antibody, ULD Antibody, Cystatin b Antibody, Cystatin B (stefin B) Antibody, Cystatin-B Antibody, STFB Antibody
Host	CSTB antibody was produced in Rabbit
Clonality:	Polyclonal
Isotype:	IgG
Immunogen Species:	CSTB / Cystatin B / Stefin B antibody was raised against Human
Antigen Type:	Recombinant protein
Immunogen:	CSTB / Cystatin B / Stefin B antibody was raised against recombinant fragment corresponding to a region within amino acids 1 and 98 of Cystatin B (SwissProt P04080). Percent identity by BLAST analysis: Human (100%); Porcine (81%).
Specificity:	Human CSTB / Stefin B
Reactivity:	Human
Purification:	Protein A purified
Presentation:	0.1 M Tris-glycine, pH 7, 10% Glycerol, 0.01% Thimerosal
Recommended Storage:	Aliquot and freeze at -20° C. Avoid freeze-thaw cycles.
Usage Summary:	Suggested starting dilutions are as follows: ICC/IF: 1:100-1:1000.
Uses:	IHC - Paraffin (10 µg/ml), ICC (1:100 - 1:1000), Immunofluorescence (1:100 - 1:1000), Western blot (Optimal dilution to be determined by the researcher)
Size:	50 µl
Concentration:	6.04 mg/ml

Immunohistochemistry Image:



Human Tonsil: Formalin-Fixed, Paraffin-Embedded (FFPE)

Requested From:

Japan

Laboratory Reagent For In Vitro Research Use Only

Not for resale without prior written consent from LifeSpan BioSciences, Inc.

Created on 9/24/2014

© 2014 LifeSpan BioSciences