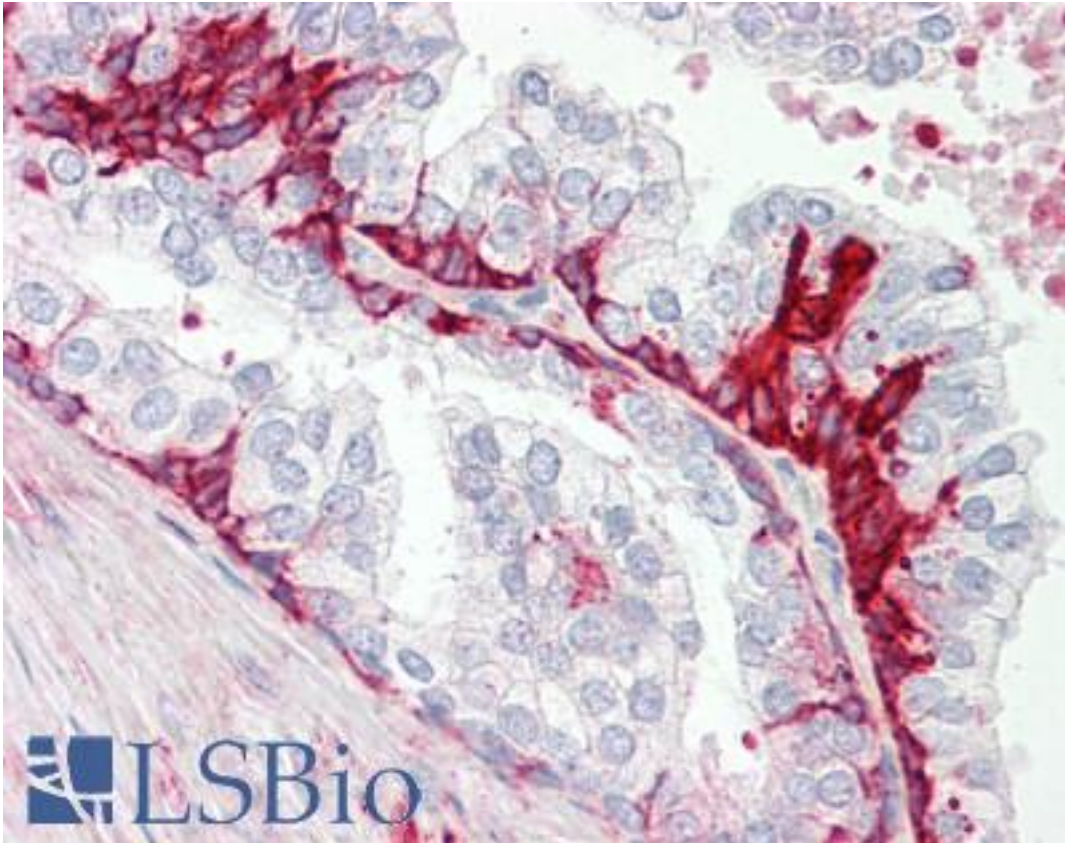


GPR55 Rabbit anti-Human Polyclonal (C-Terminus) Antibody - LS-B8785 - LSBio	
<b>CatalogID:</b>	LS-B8785
<b>Validation:</b>	This antibody replaces catalog number LS-C155104. It has been validated for use in the following assays: IHC-P.
<b>Target:</b>	G protein-coupled receptor 55 (GPR55)
<b>Synonyms:</b>	GPR55 Antibody, G-protein coupled receptor 55 Antibody, G protein-coupled receptor 55 Antibody
<b>Family / Subfamily:</b>	GPCR / Orphan-A
<b>Host</b>	GPR55 antibody was produced in Rabbit
<b>Clonality:</b>	Polyclonal
<b>Isotype:</b>	IgG
<b>Immunogen Species:</b>	GPR55 antibody was raised against Human
<b>Antigen Type:</b>	Synthetic peptide
<b>Immunogen:</b>	GPR55 antibody was raised against synthetic peptide corresponding to a region within amino acids 245 and 319 of GPR55 (SwissProt Q9Y2T6). Percent identity by BLAST analysis: Human (100%).
<b>Specificity:</b>	Human GPR55
<b>Epitope:</b>	C-Terminus
<b>Reactivity:</b>	Human
<b>Purification:</b>	Immunoaffinity purified
<b>Presentation:</b>	PBS, pH 7, 50% Glycerol, 0.01% Thimerosal
<b>Recommended Storage:</b>	Aliquot and freeze at -20° C. Avoid freeze-thaw cycles.
<b>Usage Summary:</b>	Antibody reactive against peptide, detects immunogen in ELISA.
<b>Uses:</b>	IHC - Paraffin (10 µg/ml), ELISA (Optimal dilution to be determined by the researcher)
<b>Size:</b>	50 µl
<b>Concentration:</b>	1 mg/ml

**Immunohistochemistry Image:**



Human Prostate: Formalin-Fixed, Paraffin-Embedded (FFPE)

**Requested From:**

Japan

Laboratory Reagent For In Vitro Research Use Only

Not for resale without prior written consent from LifeSpan BioSciences, Inc.

Created on 9/24/2014

© 2014 LifeSpan BioSciences