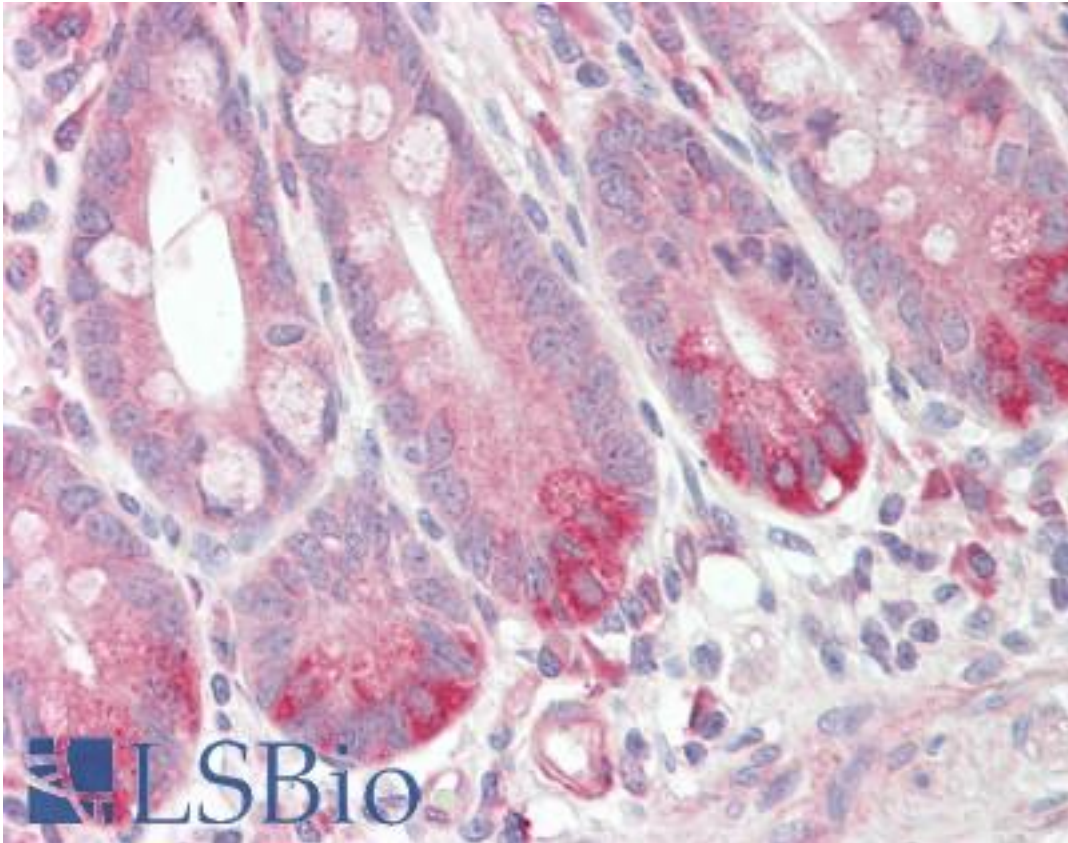


GPR160 Rabbit anti-Human Polyclonal (Internal) Antibody - LS-B8782 - LSBio	
CatalogID:	LS-B8782
Validation:	This antibody replaces catalog number LS-C155163. It has been validated for use in the following assays: IHC-P.
Target:	G protein-coupled receptor 160 (GPR160)
Synonyms:	GPR160 Antibody, HGPCR1 Antibody, G protein-coupled receptor 160 Antibody, GPCR1 Antibody, GPCR150 Antibody
Family / Subfamily:	GPCR / Orphan-A
Host	GPR160 antibody was produced in Rabbit
Clonality:	Polyclonal
Isotype:	IgG
Immunogen Species:	GPR160 antibody was raised against Human
Antigen Type:	Synthetic peptide
Immunogen:	GPR160 antibody was raised against synthetic peptide corresponding to a region within amino acids 108 and 202 of GPCR150 (GPR160) (SwissProt Q9UJ42). Percent identity by BLAST analysis: Human (100%).
Specificity:	Human GPR160
Epitope:	Internal
Reactivity:	Human
Purification:	Immunoaffinity purified
Presentation:	PBS, pH 7, 1% BSA, 20% Glycerol, 0.01% Thimerosal
Recommended Storage:	Aliquot and freeze at -20° C. Avoid freeze-thaw cycles.
Usage Summary:	Antibody reactive against peptide, detects immunogen.
Uses:	IHC - Paraffin (10 µg/ml), ELISA (Optimal dilution to be determined by the researcher)
Size:	50 µl
Concentration:	1 mg/ml

Immunohistochemistry Image:



Human Small Intestine: Formalin-Fixed, Paraffin-Embedded (FFPE)

Requested From:

Japan

Laboratory Reagent For In Vitro Research Use Only

Not for resale without prior written consent from LifeSpan BioSciences, Inc.

Created on 9/24/2014

© 2014 LifeSpan BioSciences