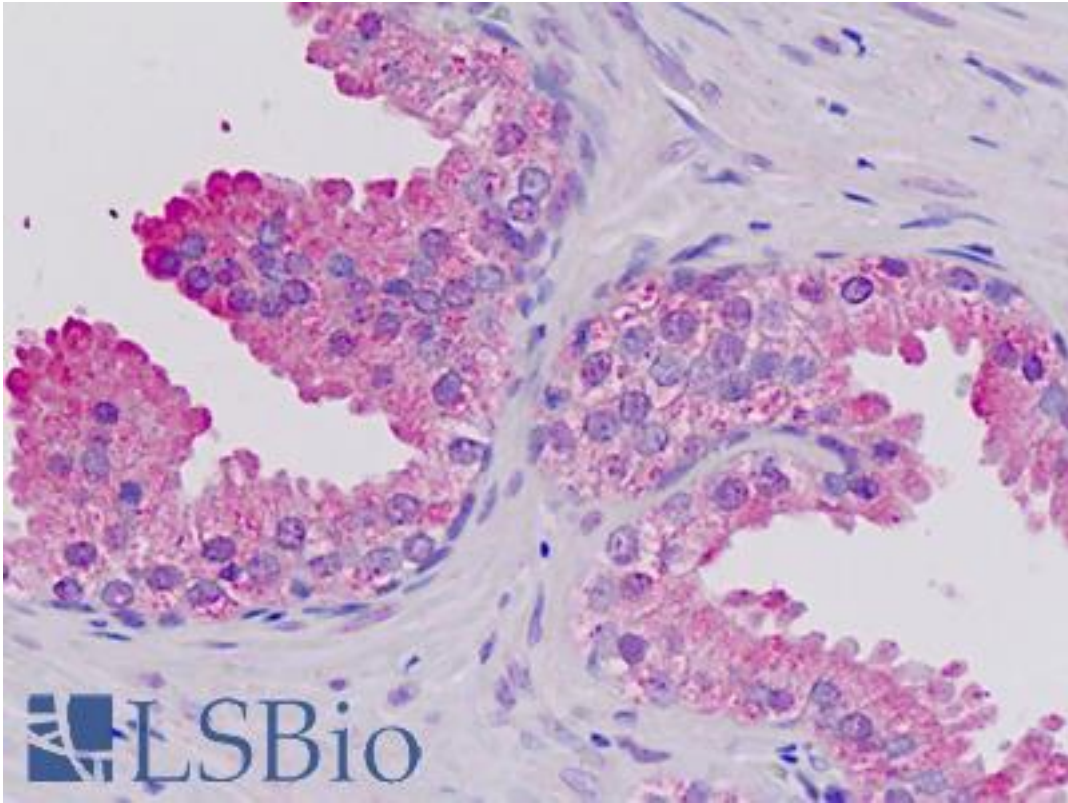


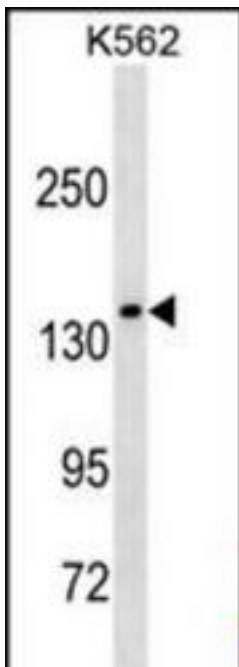
AFF1 / AF4 Rabbit anti-Human Polyclonal (aa1180-1210) Antibody - LS-B8773 - LSBio	
CatalogID:	LS-B8773
Validation:	This antibody replaces catalog number LS-C158153. It has been validated for use in the following assays: IHC-P.
Target:	AF4/FMR2 family, member 1 (AFF1)
Synonyms:	AFF1 Antibody, AF4/FMR2 family, member 1 Antibody, AF-4 Antibody, AF4 Antibody, AF4/FMR2 family member 1 Antibody, FEL Antibody, PBM1 Antibody, Protein FEL Antibody, MLLT2 Antibody, Unknown Antibody, Protein AF-4 Antibody, Proto-oncogene AF4 Antibody
Host	AFF1 antibody was produced in Rabbit
Clonality:	Polyclonal
Immunogen Species:	AFF1 / AF4 antibody was raised against Human
Antigen Type:	Synthetic peptide
Immunogen:	AFF1 / AF4 antibody was raised against kLH-conjugated synthetic peptide from C-terminal region of human MLLT2.
Specificity:	Human AFF1 / AF4
Epitope:	aa1180-1210
Reactivity:	Human
Purification:	Immunoaffinity purified
Presentation:	PBS, 0.09% sodium azide
Recommended Storage:	Maintain refrigerated at 2-8°C for up to 6 months. For long term storage store at -20°C.
Uses:	IHC - Paraffin (5 µg/ml), Western blot (1:1000) (Optimal dilution to be determined by the researcher)
Size:	200 µl

Immunohistochemistry Image:



Human Prostate: Formalin-Fixed, Paraffin-Embedded (FFPE)

Western Blot Image:



MLLT2 Antibody Western blot of K562 cell line lysates (35 ug/lane). This demonstrates the MLLT2 antibody detected the MLLT2 protein (arrow).

Requested From:

Japan

Laboratory Reagent For In Vitro Research Use Only

Not for resale without prior written consent from LifeSpan BioSciences, Inc.

Created on 9/24/2014

© 2014 LifeSpan BioSciences