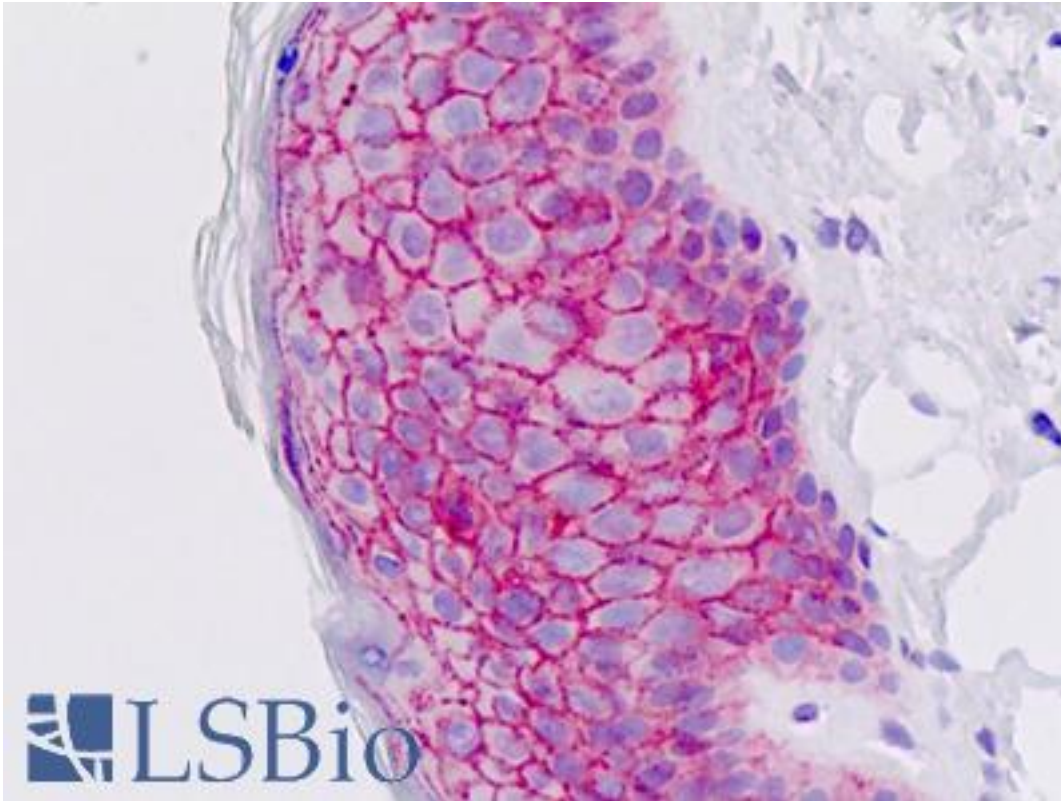


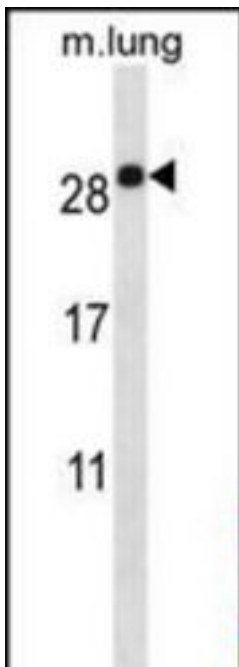
EMP2 Rabbit anti-Human Polyclonal (aa99-129) Antibody - LS-B8772 - LSBio	
CatalogID:	LS-B8772
Validation:	This antibody replaces catalog number LS-C167750. It has been validated for use in the following assays: IHC-P.
Target:	epithelial membrane protein 2 (EMP2)
Synonyms:	EMP2 Antibody, EMP-2 Antibody, Epithelial membrane protein 2 Antibody, XMP Antibody, Protein XMP Antibody
Host	EMP2 antibody was produced in Rabbit
Clonality:	Polyclonal
Immunogen Species:	EMP2 antibody was raised against Human
Antigen Type:	Synthetic peptide
Immunogen:	EMP2 antibody was raised against kLH-conjugated synthetic peptide from C-terminal region of human EMP2.
Specificity:	Human EMP2
Epitope:	aa99-129
Reactivity:	Human, Mouse
Purification:	Immunoaffinity purified
Presentation:	PBS, 0.09% sodium azide
Recommended Storage:	Maintain refrigerated at 2-8°C for up to 6 months. For long term storage store at -20°C.
Uses:	IHC - Paraffin (10 µg/ml), Western blot (1:1000) (Optimal dilution to be determined by the researcher)
Size:	200 µl

Immunohistochemistry Image:



Human Skin, Epidermis: Formalin-Fixed, Paraffin-Embedded (FFPE)

Western Blot Image:



EMP2 Antibody (C-term) Western blot of mouse lung tissue lysates (35 ug/lane). This demonstrates the EMP2 antibody detected the EMP2 protein (arrow).

Laboratory Reagent For In Vitro Research Use Only

Not for resale without prior written consent from LifeSpan BioSciences, Inc.

Created on 9/24/2014

© 2014 LifeSpan BioSciences