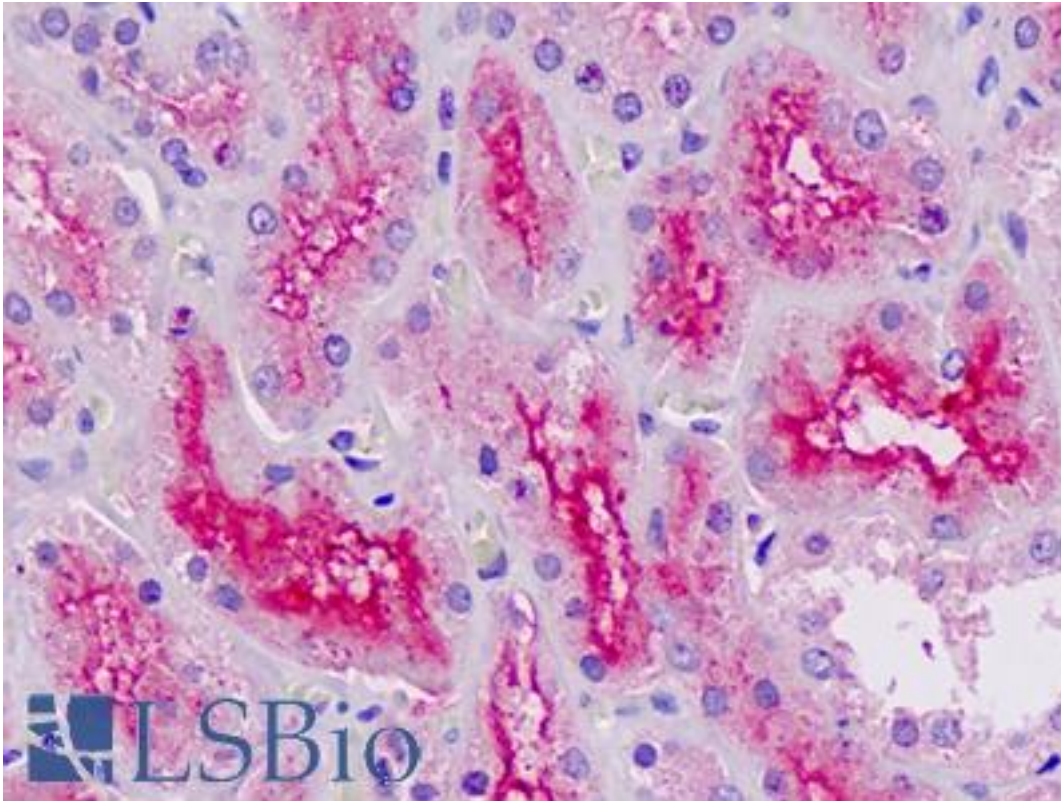


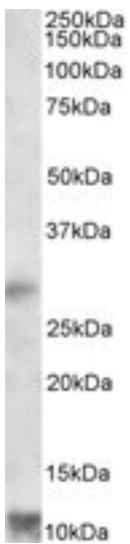
RNF7 Goat anti-Human Polyclonal (Internal) Antibody - LS-B8759 - LSBio	
CatalogID:	LS-B8759
Validation:	This antibody replaces catalog number LS-C108944. It has been validated for use in the following assays: IHC-P.
Target:	ring finger protein 7 (RNF7)
Synonyms:	RNF7 Antibody, CKII beta-binding protein 1 Antibody, CKBBP1 Antibody, RING-box protein 2 Antibody, Rbx2 Antibody, Regulator of cullins 2 Antibody, Ring finger protein 7 Antibody, ROC2 Antibody, Zinc RING finger protein SAG Antibody
Host	RNF7 antibody was produced in Goat
Clonality:	Polyclonal
Immunogen Species:	RNF7 antibody was raised against Human
Antigen Type:	Synthetic peptide
Immunogen:	RNF7 antibody was raised against synthetic peptide DACLRCQAENKQE from an internal region of human RNF7 (NP_055060.1). Percent identity by BLAST analysis: Human, Gorilla, Gibbon, Monkey, Marmoset, Mouse, Rat, Elephant, Panda, Dog, Bat, Bovine, Horse, Pig, Opossum, Turkey, Chicken, Platypus, Lizard, Xenopus, Trout, Catfish, Salmon, Sablefish, Stickleback, Pufferfish, Zebrafish (100%); Tick (92%); Eye worm, Seq squirt, Sea anemone (85%).
Specificity:	Human RNF7. This antibody is expected to recognize isoform 1 (NP_055060.1).
Epitope:	Internal
Reactivity:	Human, Gorilla, Gibbon, Monkey, Mouse, Rat, Bat, Bovine, Dog, Horse, Pig, Chicken, Xenopus, Zebrafish
Purification:	Immunoaffinity purified
Presentation:	Tris-buffered saline, pH 7.3, 0.5% BSA, 0.02% sodium azide
Recommended Storage:	Store at -20°C. Minimize freezing and thawing.
Usage Summary:	Western Blot: Approx 11kD band observed in Human Human Heart lysates (calculated MW of 12.7kD according to NP_055060.1). Recommended concentration: 1-3 ug/ml. An additional band of 28kD was consistently observed, however this band was not blocked by the immunizing peptide and it is therefore a non-specific signal. We call for caution when used for other assays than Western blot.
Uses:	IHC - Paraffin (5 µg/ml), Western blot (1 - 3 µg/ml), ELISA (Optimal dilution to be determined by the researcher)
Size:	50 µg
Concentration:	0.5 mg/ml

Immunohistochemistry Image:



Human Kidney: Formalin-Fixed, Paraffin-Embedded (FFPE)

Western Blot Image:



RNF7 antibody (1 ug/ml) staining of Human Heart lysate (35 ug protein in RIPA buffer). Primary incubation was 1 hour. Detected by chemiluminescence.

Requested From:

Japan

Laboratory Reagent For In Vitro Research Use Only

Not for resale without prior written consent from LifeSpan BioSciences, Inc.

Created on 9/24/2014

© 2014 LifeSpan BioSciences