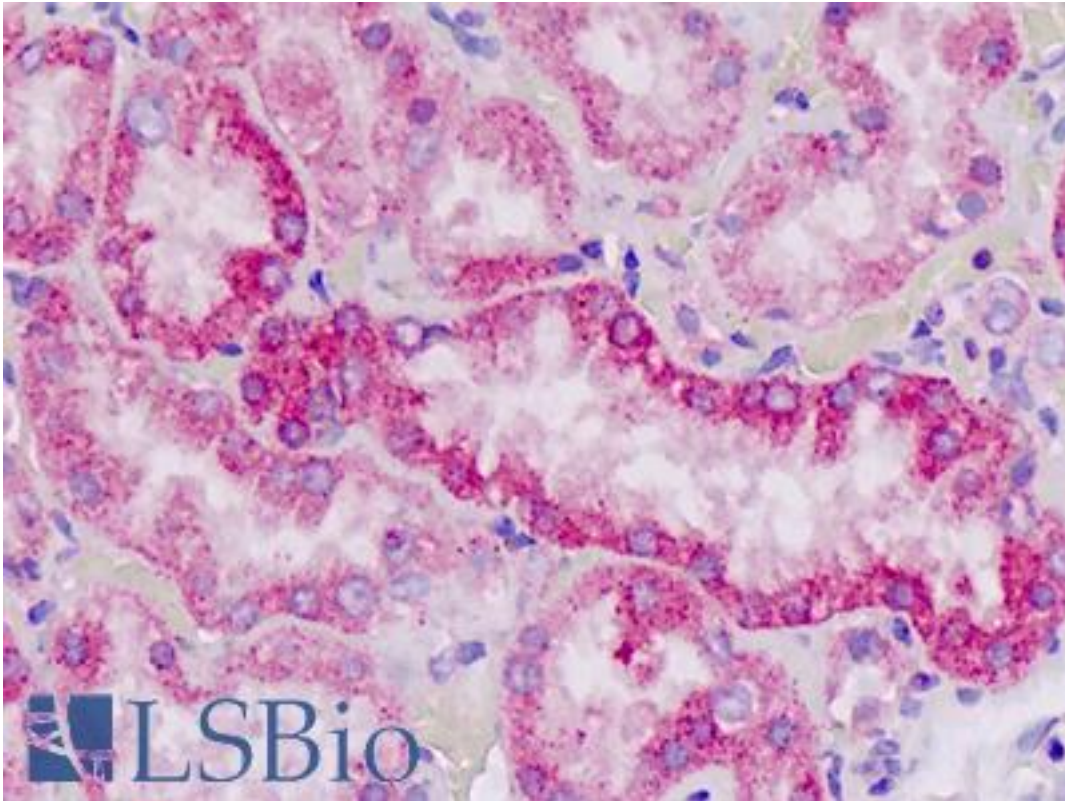


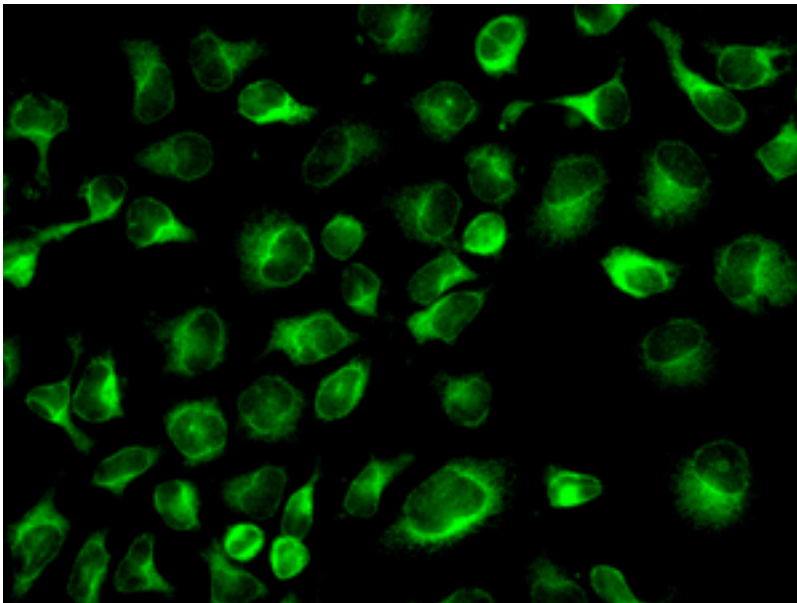
CLPTM1 Rabbit anti-Human Monoclonal (N-Terminus) (EPR8800) Antibody - LS-B8756 - LSBio	
CatalogID:	LS-B8756
Validation:	This antibody replaces catalog number LS-C154507. It has been validated for use in the following assays: IHC-P.
Target:	cleft lip and palate associated transmembrane protein 1 (CLPTM1)
Synonyms:	CLPTM1 Antibody
Host	CLPTM1 antibody was produced in Rabbit
Clonality:	Monoclonal
Isotype:	IgG
Clone Name:	EPR8800
Immunogen Species:	CLPTM1 antibody was raised against Human
Antigen Type:	Synthetic peptide
Immunogen:	CLPTM1 antibody was raised against a synthetic peptide corresponding to residues near the N-terminus of human CLPTM1 was used as an immunogen.
Specificity:	Human CLPTM1.
Epitope:	N-Terminus
Reactivity:	Human
Purification:	Tissue culture supernatant
Presentation:	Tris-Glycine-NaCl or PBS, pH 7.2-7.4, 40-50% Glycerol, 0.01% sodium azide, 0.05% BSA
Recommended Storage:	Long term: -20°C; Short term: +4°C; Avoid freeze-thaw cycles.
Uses:	IHC - Paraffin (1:50), ICC (1:250 - 1:500), Immunofluorescence (1:500), Western blot (1:1000 - 1:10000), Flow Cytometry (1:10 - 1:100) (Optimal dilution to be determined by the researcher)
Size:	50 µl

Immunohistochemistry Image:



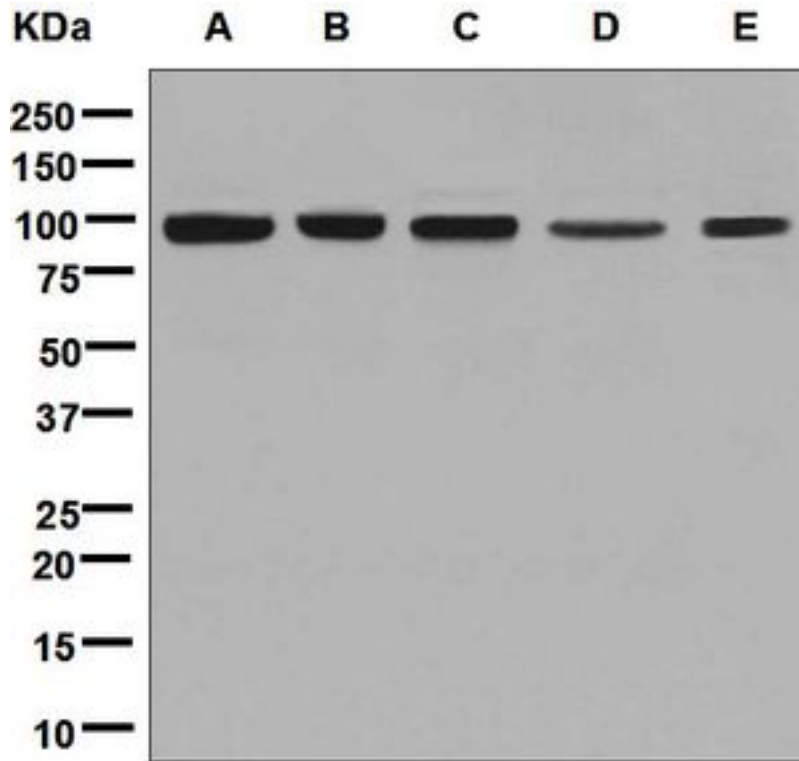
Human Kidney: Formalin-Fixed, Paraffin-Embedded (FFPE)

Immunofluorescence Image:



Immunofluorescent staining of HeLa cells using anti-CLPTM1 antibody.

Western Blot Image:



Western blot analysis on (A) HeLa, (B) 293T, (C) U87-MG, (D) HepG2, and (E) Jurkat cell lysates using anti-CLPTM1 antibody.

Requested From:

Japan

Laboratory Reagent For In Vitro Research Use Only

Not for resale without prior written consent from LifeSpan BioSciences, Inc.

Created on 9/24/2014

© 2014 LifeSpan BioSciences