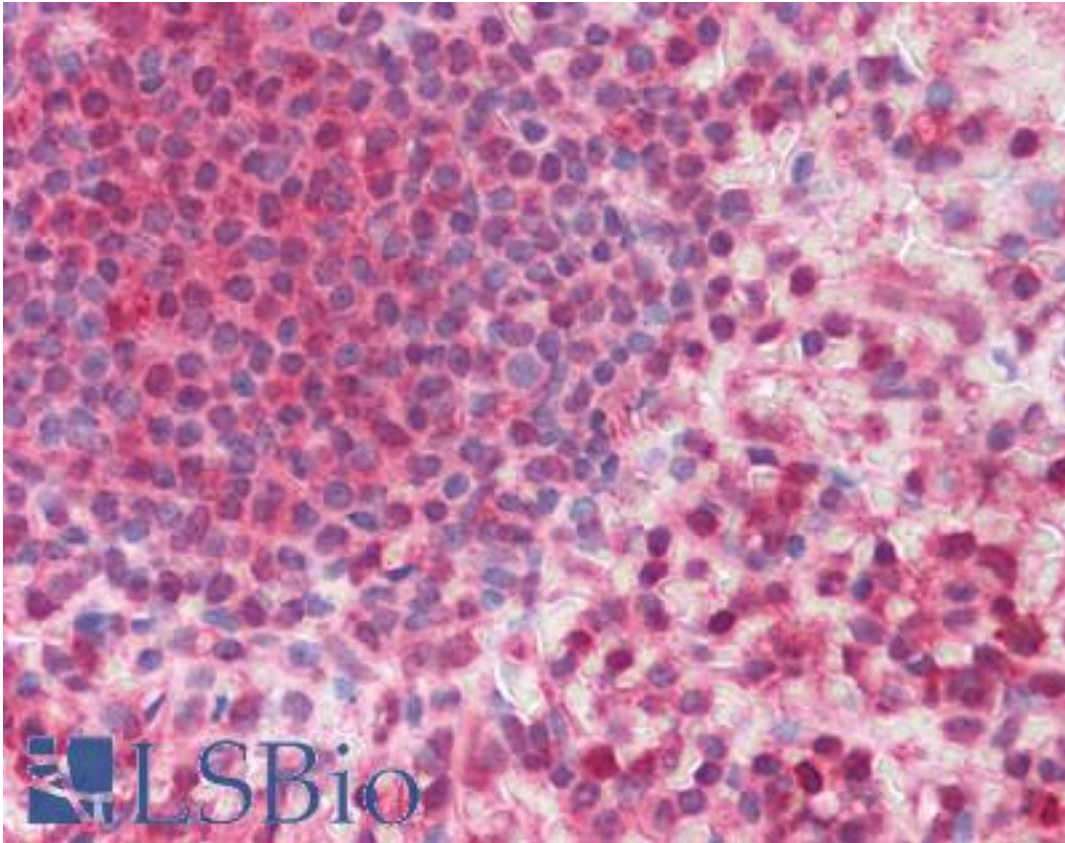


MMP16 / MT3-MMP Rabbit anti-Human Polyclonal (aa169-183) Antibody - LS-B875 - LSBio	
<b>CatalogID:</b>	LS-B875
<b>Validation:</b>	This antibody replaces catalog number LS-C3110. It has been validated for use in the following assays: IHC.
<b>Target:</b>	matrix metalloproteinase 16 (membrane-inserted) (MMP16)
<b>Synonyms:</b>	MMP16 Antibody, C8orf57 Antibody, MMP-X2 Antibody, MT-MMP3 Antibody, MT3MMP Antibody, MT-MMP 3 Antibody, MT-MMP2 Antibody, MT2-MMP Antibody, Matrix metalloproteinase-16 Antibody, Membrane type 3-MMP Antibody, MMP-16 Antibody, MMPX2 Antibody, MT3-MMP Antibody, MTMMP3 Antibody
<b>Family / Subfamily:</b>	Protease / Metalloproteinase M10A
<b>Host</b>	MMP16 antibody was produced in Rabbit
<b>Clonality:</b>	Polyclonal
<b>Immunogen Species:</b>	MMP16 / MT3-MMP antibody was raised against Human
<b>Antigen Type:</b>	Synthetic peptide
<b>Immunogen:</b>	MMP16 / MT3-MMP antibody was raised against synthetic peptide from human MMP16.
<b>Specificity:</b>	Amino acids 169 to 183 of human MMP16
<b>Epitope:</b>	aa169-183
<b>Reactivity:</b>	Human
<b>Purification:</b>	Protein G purified
<b>Presentation:</b>	PBS, 0.1% sodium azide.
<b>Recommended Storage:</b>	Long term: -20°C; Short term: +4°C. Avoid repeat freeze-thaw cycles.
<b>Usage Summary:</b>	Immunohistochemistry: LS-B875 was validated for use in immunohistochemistry on a panel of 21 formalin-fixed, paraffin-embedded (FFPE) human tissues after heat induced antigen retrieval in pH 6.0 citrate buffer. After incubation with the primary antibody, slides were incubated with biotinylated secondary antibody, followed by alkaline phosphatase-streptavidin and chromogen. The stained slides were evaluated by a pathologist to confirm staining specificity. The optimal working concentration for LS-B875 was determined to be 5 ug/ml.
<b>Uses:</b>	IHC - Paraffin (5 µg/ml), ELISA (1:000 - 1:1000) (Optimal dilution to be determined by the researcher)
<b>Size:</b>	50 µg
<b>Concentration:</b>	1 mg/ml

**Immunohistochemistry Image:**



Anti-MMP16 antibody IHC of human spleen. Immunohistochemistry of formalin-fixed, paraffin-embedded tissue after heat-induced antigen retrieval. Antibody LS-B875 concentration 5 ug/ml.

**Requested From:**

Japan

Laboratory Reagent For In Vitro Research Use Only

Not for resale without prior written consent from LifeSpan BioSciences, Inc.

Created on 9/24/2014

© 2014 LifeSpan BioSciences